



SERIES NO.
SDT: 39-M 67



Government of Tonga

STATISTICAL BULLETIN

ON



MONTHLY MIGRATION STATISTICS DECEMBER 2017



Statistics Department
P.O. Box 149,
Nuku'alofa,
Kingdom of Tonga
Website: www.spc.int/prism/tonga/
E-mail: dept@stats.gov.to

January 2018

Price:

PREFACE

This bulletin is produced by the Statistics Department on monthly migration statistics of the Kingdom for the month of December 2017. It shows the international arrivals and departures by months back to January 2013, mode of transportation, type of passengers, purpose of visit, age group of passengers and some charts for analysis purposes.

The data is extracted from the arrival and departure cards of the Immigration Department, Ministry of Foreign Affairs, and Customs Department's vessel & yacht log book.

This bulletin also presents information relating to gender of passengers and country of usual residence, and country visited.

Special thanks are extended to the Immigration Department of the Ministry of Foreign Affairs and Trade, Customs Department of the Ministry of Revenue Services, Airport Terminal Services, Tonga Airport Limited and Ports Authority for their assistance in providing their administrative information relating to these statistics. I am also grateful particularly to my staff members who contributed to the compilation of this report.

Any suggestions that recipients of this bulletin wish to make for its future improvement will be welcome by the Statistics Department.



.....
Dr. Viliami Konifelenisi Fifita

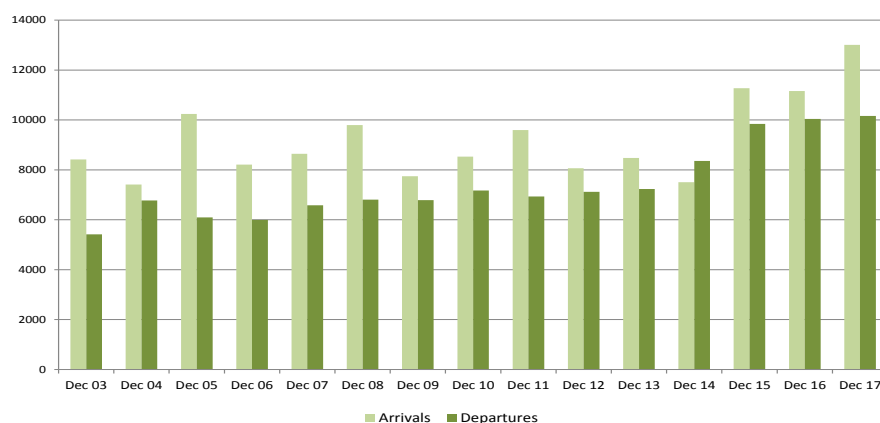
Government Statistician

Table 1: Total Arrivals and Departures by annual percentage change and previous month

Month of December 2017	Number	Change from previous month (%)	Change from previous year (%)
All Arrivals	13,036	41.5	-20.1
Air Visitors	9,625	125.0	18.7
Air Returning Residents	3,385	-7.8	11.0
Cruise Ships	-	0.0	0.0
Yachts	26	-68.7	116.7
All Departures	10,201	6.2	-32.9

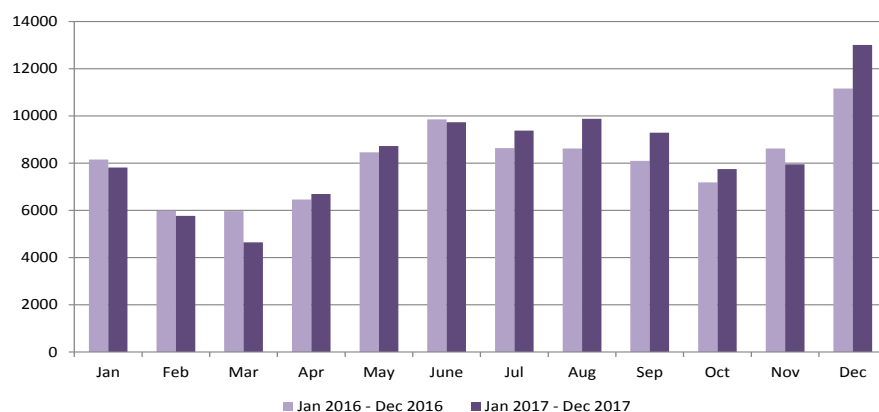
- An increase of 41.5% of all arrivals (13,036) compared to the previous month of November 2017 (9,210)
- An increase of 125.0% of all air visitors (9,625) compared to November 2017 (4,278)
- A decline of 7.8% (3,385) of returning residents compared to previous month (3,672)
- There was no cruise ship for the month of December 2017
- A decline of 68.7 % of arrivals by yachts compared to November 2017 (83).
- An increase of 6.2% of all departures from November 2017.

Fig. 1. December Air Arrivals and Departures 2003 - 2017



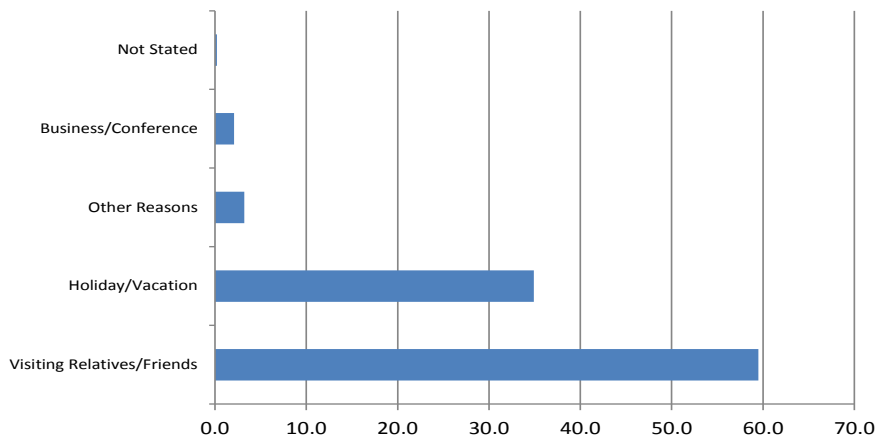
- Total air arrivals in December 2017 were 13,010 an increase of 16.6% compared to December 2016 (11,157).
- Total air departures of 10,164 in December 2017, again an increase of 1.2% compared to December 2016 (10,041)

Fig. 2. Monthly Air Arrivals vs the corresponding month of the previous year



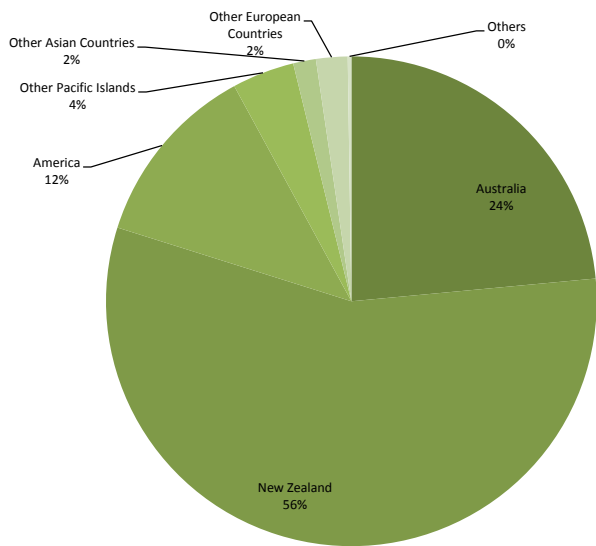
- Total air visitor arrivals in December 2017 were 9,625 an increase of 18.7% compared to December 2016 (8,108)

Fig. 3. Air Visitors by Purpose of Visit December, 2017



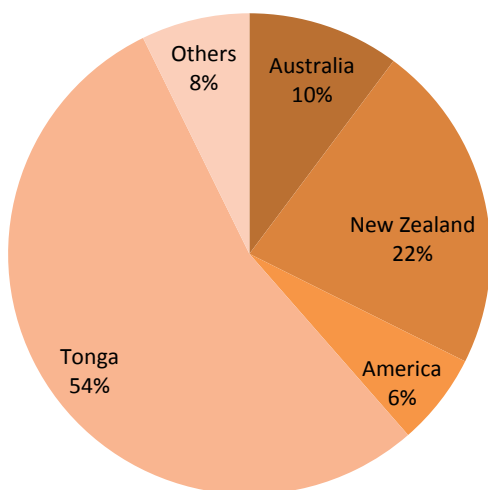
- Visit Relatives/Friends remain as the leading air visitors accounting for 59.5% (5,730)
- Holiday/Vacation made up 34.9% (3,363) of all air visitors to the Kingdom in the month of December
- Visitors who were here on Business or Conference made up 2.1% (203) and those with other reasons were 3.2% (305)

Fig. 4. Air Visitors by Country of Usual Residence December, 2017



- New Zealand remains as the leading country in visitors arrivals by country of usual residence, accounting for 56.3% (5,420) of total air visitors
- This was followed by Australia with 23.5% (2,264), and America 12.2% (1,179)

Fig. 5. Air Departures by Country of Usual Residence December, 2017



- Most of the persons departing in the month of December were residents of Tonga (5,504) followed by New Zealand (2,257) and Australia (1,035)

Definitions

- ▶ **A Visitor** is a person other than a Tongan citizen, permit holder and exempted person, who usually stay at least 24 hours in the Kingdom, or who stays overnight in accommodation within Tonga. This refers to passengers arriving by air and yacht only.
- ▶ **Cruise Ship Passengers** are defined as those who arrive and depart in the same vessel which is on a cruise trip, and use that vessel's accommodation during their stay in Tonga. They are also known as "Excursionist"
- ▶ **A Returning resident** is a person who has the Kingdom of Tonga as their permanent address for more than six months of the year and returns to Tonga after a trip overseas. Tongan residence is self-defined as reported by travelers when completing the Passenger Arrival Card.
- ▶ **Mode of Transport** Only air, yacht and cruise ships passengers are included. Passenger/crew on cargo, navy or special vessels are excluded.

Table 1. Monthly Arrival and Departure by Mode of Travel and Net Migration, 2013 - 2017

Period	Visitors Arrivals				Returning Residents				Total Arrivals				Total Departures				Net Migration
	Air	Ship	Yacht	Total	Air	Ship	Yacht	Total	Air	Ship	Yacht	Total	Air	Ship	Yacht	Total	
2005	42,437	11,840	943	55,220	21,066			21,066	63,503	11,840	943	76,286	60,276	11,871	1,393	73,540	2,746
2006	46,268	10,809	868	57,945	20,707			20,707	66,975	10,809	868	78,652	68,637	13,049	582	82,268	(3,616)
2007	43,344	8,790	1,140	53,274	22,313			22,313	65,657	8,790	1,140	75,587	71,325	10,461	1,630	83,416	(7,829)
2008	50,462	14,599	1,828	66,889	24,239			24,239	74,701	14,599	1,828	91,128	76,704	14,602	1,584	92,890	(1,762)
2009	45,711	27,641	1,317	74,669	25,134			25,134	70,845	27,641	1,317	99,803	70,949	27,150	1,261	99,360	443
2010	47,081	16,265	1,659	65,005	24,501			24,501	71,582	16,265	1,659	89,506	72,533	16,244	1,830	90,607	(1,101)
2011	46,005	20,519	1,849	68,373	26,587			26,587	72,592	20,519	1,849	94,960	73,589	20,550	1,468	95,607	(647)
2012	47,457	7,957	1,816	57,230	25,170			25,170	72,627	7,957	1,816	82,400	74,098	7,987	1,720	83,805	(1,405)
2013	48,188	9,432	2,045	59,665	25,808			25,808	73,996	9,432	2,045	85,473	73,938	9,427	1,769	85,134	339
2014	48,854	13,733	1,632	64,219	26,128			26,128	74,982	13,733	1,632	90,347	78,604	13,724	1,762	94,090	(3,743)
2015	53,752	17,375	1,426	72,553	31,517			31,517	85,269	17,375	1,426	104,070	86,574	17,383	1,422	105,379	(1,309)
2016	59,130	25,714	1,816	86,662	36,800			36,800	95,930	25,714	1,818	123,462	95,043	25,703	1,520	122,266	1,196
2013																	
January	2,927	922	9	3,858	3,085			3,085	6,012	922	9	6,943	7,440	922	8	8,370	(1,427)
February	2,621	1,310	2	3,933	1,816			1,816	4,437	1,310	2	5,749	6,077	1,310	-	7,387	(1,638)
March	2,797	626	11	3,434	1,880			1,880	4,677	626	11	5,314	5,035	626	10	5,671	(357)
April	3,088	3,205	50	6,343	2,096			2,096	5,184	3,205	50	8,439	5,100	3,204	14	8,318	121
May	3,965	-	328	4,293	2,740			2,740	6,705	-	328	7,033	5,815	-	132	5,947	1,086
June	4,693	700	182	5,575	2,046			2,046	6,739	700	182	7,621	5,411	700	193	6,304	1,317
July	5,415	-	282	5,697	2,183			2,183	7,598	-	282	7,880	7,747	-	220	7,967	(87)
August	4,753	-	305	5,058	2,051			2,051	6,804	-	305	7,109	7,227	-	267	7,494	(385)
September	4,068	1,954	339	6,361	1,711			1,711	5,779	1,954	339	8,072	5,579	1,950	291	7,820	252
October	4,037	-	403	4,440	1,789			1,789	5,826	-	403	6,229	6,111	-	384	6,495	(266)
November	3,395	715	121	4,231	2,363			2,363	5,758	715	121	6,594	5,165	715	232	6,112	482
December	6,429	-	13	6,442	2,048			2,048	8,477	-	13	8,490	7,231	-	18	7,249	1,241
2014																	
January	3,259	1,446	3	4,708	3,167			3,167	6,426	1,446	3	7,875	8,028	1,444	-	9,472	(1,597)
February	2,441	3,677	24	6,142	1,861			1,861	4,302	3,677	24	8,003	5,958	3,676	14	9,648	(1,645)
March	2,484	1,817	10	4,311	1,880			1,880	4,364	1,817	10	6,191	4,885	1,811	22	6,718	(527)
April	3,363	2,224	57	5,644	2,034			2,034	5,397	2,224	57	7,678	5,063	2,227	40	7,330	348
May	4,189	260	243	4,692	2,872			2,872	7,061	260	243	7,564	6,228	260	94	6,582	982
June	4,463	1,739	256	6,458	2,122			2,122	6,585	1,739	256	8,580	5,605	1,737	294	7,636	944
July	5,477	-	233	5,710	2,128			2,128	7,605	-	233	7,838	8,213	-	286	8,499	(661)
Aug	5,090	-	201	5,291	1,432			1,432	6,522	-	201	6,723	6,753	-	192	6,945	(222)
September	4,779	308	209	5,296	2,248			2,248	7,027	308	209	7,544	7,035	308	271	7,614	(70)
October	4,102	1,760	307	6,169	2,064			2,064	6,166	1,760	307	8,233	6,588	1,759	381	8,728	(495)
November	3,488	199	81	3,768	2,559			2,559	6,047	199	81	6,327	5,892	199	155	6,246	81
December	7,301	303	8	7,612	2,206			2,206	9,507	303	8	9,818	8,356	303	13	8,672	1,146
2015																	
January	3,343	2,935	20	6,298	3,720			3,720	7,063	2,935	20	10,018	8,779	2,935	29	11,743	(1,725)
February	2,381	2,373	23	4,777	2,119			2,119	4,500	2,373	23	6,896	5,498	2,373	7	7,878	(982)
March	2,944	2,011	6	4,961	2,277			2,277	5,221	2,011	6	7,238	5,635	2,011	9	7,655	(417)
April	3,642	1,940	31	5,613	2,277			2,277	5,919	1,940	31	7,890	6,408	1,940	30	8,378	(488)
May	3,820	555	203	4,578	2,690			2,690	6,510	555	203	7,268	5,968	555	89	6,612	656
June	5,898	1,757	155	7,810	3,652			3,652	9,550	1,757	155	11,462	5,600	1,757	251	7,608	3,854
July	5,961	-	176	6,137	2,115			2,115	8,076	-	176	8,252	10,489	-	143	10,632	(2,380)
August	4,809	-	231	5,040	2,085			2,085	6,894	-	231	7,125	7,606	-	206	7,812	(687)
September	4,915	1,953	282	7,150	2,454			2,454	7,369	1,953	282	9,604	6,604	1,958	260	8,822	782
October	4,045	3,460	203	7,708	2,529			2,529	6,574	3,460	203	10,237	7,326	3,463	251	11,040	(803)
November	3,550	291	96	3,937	2,769			2,769	6,319	291	96	6,706	6,817	291	142	7,250	(544)
December	8,444	100	-	8,544	2,830			2,830	11,274	100	-	11,374	9,844	100	5	9,949	1,425
2016																	
January	3,581	-	-	3,581	4,569			4,569	8,150	-	-	8,150	9,441	-	1	9,442	(1,292)
February	3,259	5,474	-	8,733	2,720			2,720	5,979	5,474	-	11,453	7,592	5,467	-	13,059	(1,606)
March	3,315	1,411	4	4,730	2,653			2,653	5,968	1,411	4	7,383	7,073	1,411	4	8,488	(1,105)
April	3,537	3,690	8	7,235	2,918			2,918	6,455	3,690	8	10,153	6,135	3,698	6	9,839	314
May	5,220	-	245	5,465	3,242			3,242	8,462	-	245	8,707	7,104	-	154	7,258	1,449
June	6,763	1,784	259	8,806	3,090			3,090	9,853	1,784	259	11,896	8,356	1,777	195	10,328	1,568
July	6,103	-	187	6,290	2,533			2,533	8,636	-	187	8,823	9,665	-	194	9,859	(1,036)
August	5,880	1,394	314	7,588	2,736			2,736	8,616	1,394	314	10,324	7,033	1,387	229	8,649	1,675
September	5,185	-	359	5,544	2,907			2,907	8,092	-	359	8,451	7,555	-	341	7,896	555
October	4,298	6,630	342	11,270	2,886			2,886	7,184	6,630	342	14,156	7,699	6,626	258	14,583	(427)
November	5,880	1,394	314	7,588	2,736			2,736	8,616	1,394	314	10,324	7,033	1,387	229	8,649	1,675
December	8,108	5,155	12	13,275	3,049			3,049	11,157	5,155	12	16,324	10,041	5,161	6	15,208	1,116
2017																	
January	3,351	2,187	8	5,546	4,462			4,462	7,813	2,187	8	10,008	9,620	2,185	7	11,812	(1,804)
February	2,936	3,642	-	6,578	2,832			2,832	5,768	3,642	-	9,410	6,960	3,632	2	10,594	(1,184)
March	2,560	3,839	10	6,409	2,081			2,081	4,641	3,839	10	8,490	4,286	3,842	4	8,132	358
April	3,840	315	23	4,178	2,853			2,853	6,693	315	23	7,031	6,359	315	5	6,679	352
May	5,256	1,371	210	6,837	3,470			3,470	8,726	1,371	210	10,307	7,599	1,366	131	9,096	1,211
June	6,545	1,690	363	8,598	3,189			3,189	9,734	1,690	363	11,787	8,087	1,690	456	10,233	(1,554)
July	6,276	-	335	6,611	3,100			3,100	9,376	-	335	9,711	10,410	-	282	10,692	981
August	6,810	1,354	288	8,452	3,071			3,071	9,881	1,354	288	11,523	10,047	1,354	276	11,677	154
September	6,390	3,719	625	10,734	2,900			2,900	9,290	3,719	615	13,624	9,188	3,719	370	13,277	(347)
October	4,639	2,425	383	7,447	3,109			3,109	7,748	2,425	383	10,556	8,255	2,417	302	10,974	418
November	4,278	1,177	83	5,538	3,672			3,672	7,950	1,177	83	9,210	8,305	1,178	120	9,603	393
December	9,625	-	26	9,651	3,385			3,385	13,010	-	26	13,036	10,164	-	37	10,201	(2,835)

Issued by: Statistics Department, P.O. Box 149, Nuku'alofa, Kingdom of Tonga. Telephone: (676) 23-300/23-913 Fax: (676)24 303

www.spc.int/prism/tonga/

Table 2. Total Arrivals by Age, Type of Passangers and Gender December, 2017

Age Group	Type of Passangers								
	Total			Visitors			Returning Residents		
	Total	Male	Female	Total	Male	Female	Total	Male	Female
0-4	795	397	398	704	348	356	91	49	42
5-9	896	446	450	814	403	411	82	43	39
10-14	840	403	437	753	357	396	87	46	41
15-19	1,012	490	522	823	379	444	189	111	78
20-24	1,133	536	597	734	293	441	399	243	156
25-29	1,086	543	543	678	276	402	408	267	141
30-34	1,020	525	495	643	290	353	377	235	142
35-39	941	485	456	635	298	337	306	187	119
40-44	984	525	459	671	330	341	313	195	118
45-49	1,120	616	504	792	417	375	328	199	129
50-54	1,036	550	486	778	398	380	258	152	106
55-59	786	377	409	594	273	321	192	104	88
60-64	543	273	270	413	198	215	130	75	55
65-69	379	191	188	279	137	142	100	54	46
70-74	216	97	119	154	64	90	62	33	29
75+	223	109	114	160	76	84	63	33	30
Total	13,010	6,563	6,447	9,625	4,537	5,088	3,385	2,026	1,359
% Distribution	167.9	84.7	83.2	124.2	58.6	65.7	43.7	26.1	17.5

Table 3. Total Visitors by Usual Residence and Purpose of Visit December, 2017

Country of Usual Residence	Purpose of Visit						
	Total	% Distribution	Holiday/Vacation	Business/Conference	Visiting Relative/Friends	Other Reasons	Not Stated
Australia	2,264	23.5	773	37	1392	59	3
New Zealand	5,420	56.3	1879	58	3325	148	10
Fiji	210	2.2	44	26	101	36	3
American Samoa	30	0.3	11	0	19	0	0
Western Samoa	51	0.5	16	8	26	1	0
Other Pacific Islands	104	1.1	22	31	44	6	1
Japan	32	0.3	20	3	5	4	0
China	60	0.6	25	6	18	11	0
India	9	0.1	4	1	0	4	0
Korea	9	0.1	2	0	5	2	0
Other Asian Countries	34	0.4	13	5	13	3	0
UK	48	0.5	27	5	16	0	0
Germany	26	0.3	23	0	3	0	0
France	34	0.4	19	4	7	3	1
Italy	7	0.1	6	0	0	1	0
Other European Countries	85	0.9	66	6	10	3	0
All African Countries	-	-	0	0	0	0	0
United States of America	1,179	12.2	404	11	735	23	6
Canada	11	0.1	4	0	6	1	0
Other American Countries	12	0.1	5	2	5	0	0
Total	9,625	100.0	3,363	203	5,730	305	24
% Distribution	100.0		34.9	2.1	59.5	3.2	0.2

Table 4: AIR DEPARTURES by Age Group, Passanger's Type for December, 2017

Age Group	Returning Residence	Percentage Distribution	Visitors	Percentage Distribution	Total	Percentage Distribution
0 - 4	280	5.1	276	5.9	556	5.5
5 - 9	386	7.0	231	5.0	617	6.1
10 - 14	474	8.6	216	4.6	690	6.8
15 - 19	609	11.1	278	6.0	887	8.7
20 - 24	540	9.8	346	7.4	886	8.7
25 - 29	485	8.8	378	8.1	863	8.5
30 - 34	467	8.5	356	7.6	823	8.1
35 - 39	396	7.2	372	8.0	768	7.6
40 - 44	375	6.8	318	6.8	693	6.8
45 - 49	364	6.6	423	9.1	787	7.7
50 - 54	319	5.8	456	9.8	775	7.6
55 - 59	260	4.7	338	7.3	598	5.9
60 - 64	208	3.8	266	5.7	474	4.7
65 - 69	129	2.3	201	4.3	330	3.2
70 - 74	92	1.7	114	2.4	206	2.0
75+	120	2.2	91	2.0	211	2.1
All Ages	5,504	100.0	4,660	100.0	10,164	100.0
YACHT	-	-	37		37	0
CRUISE SHIP	-	-	-		-	0
Total	5,504	100.0	4,697	100.0	10,201	100.0

Table 5. Total Departures by Country of Residence and Gender December, 2017

Country of Usual Residence	Male	Percent	Female	Percent	Total	Percent
	No.	Distribution	No.	Distribution	No.	Distribution
Australia	478	10.0	557	10.4	1,035	10.2
New Zealand	1,002	20.9	1,255	23.4	2,257	22.2
Fiji	100	2.1	80	1.5	180	1.8
American Samoa	6	0.1	1	0.0	7	0.1
Western Samoa	15	0.3	14	0.3	29	0.3
Tonga	2,605	54.3	2,899	54.0	5,504	54.2
Other Pacific Islands	50	1.0	54	1.0	104	1.0
Japan	20	0.4	17	0.3	37	0.4
China	64	1.3	23	0.4	87	0.9
India	1	0.0	2	0.0	3	0.0
Korea	8	0.2	7	0.1	15	0.1
Other Asian Countries	37	0.8	13	0.2	50	0.5
UK	27	0.6	22	0.4	49	0.5
Germany	20	0.4	24	0.4	44	0.4
France	15	0.3	19	0.4	34	0.3
Italy	5	0.1	2	0.0	7	0.1
Other European Countries	43	0.9	28	0.5	71	0.7
All African Countries	2	0.0	-	-	2	0.0
United States of America	285	5.9	344	6.4	629	6.2
Canada	8	0.2	5	0.1	13	0.1
Other American Countries	7	0.1	-	-	7	0.1
Total	4,798	100.0	5,366	100.0	10,164	100.0



**Printed by STATISTICS DEPARTMENT
Nuku'alofa, TONGA—2018**
