

## PREFACE

This is the fifteenth bulletin in a series of migration reports produced by the Statistics Department as the main reference on volume of overseas visitors, cruise ship passengers, yacht passengers and residents movement to and from the Kingdom of Tonga. This bulletin covers the period from January to December 2014. Included are tables providing a monthly breakdown of the data.

The data is extracted from the arrival and departure cards of the Immigration Department, Ministry of Foreign Affairs, and Customs Department's vessel & yacht log book.

This bulletin presents information relating to number of arrivals and departures by port, passenger's type, transport mode, gender, age group, purpose of travel and country of usual residence.

Special thanks are extended to the Immigration Department of the Ministry of Foreign Affairs, Customs Department of the Ministry of Revenue Services, Airport Terminal Services, Tonga Airports Limited and Ports Authority for their assistance in providing their administrative information relating to these statistics. I am also grateful particularly to my staff in the Population and Social Statistics Division who contributed to the compilation of this report.

Any suggestions that recipients of this bulletin wish to make for its future improvement will be welcome by the Statistics Department.

.....  
Mr. 'Ata'ata M. Finau  
Government Statistician

Statistics Department ,  
P.O.Box 149,  
Nuku'alofa,  
Tonga .

Telephone : (676) 23 – 300  
Fax : (676) 24 – 303  
Email : [dept@stats.gov.to](mailto:dept@stats.gov.to)  
Website : [www.spc.int/prism/tonga/](http://www.spc.int/prism/tonga/)

## TABLE OF CONTENTS

PREFACE.....	1
TABLE OF CONTENTS.....	2
LIST OF FIGURES.....	3
LIST OF TABLES.....	3
LIST OF STATISTICAL TABLES FOR YEAR 2014.....	3
1.MAIN FEATURES.....	4
1.1 GENERAL.....	4
1.2 TOTAL INTERNATIONAL ARRIVALS AND DEPARTURES.....	4
1.3 TOTALINTERNATIONALARRIVALSANDDEPARTURESBYANNUALPERCENTAGECHANGE....	5
2. INTERNATIONAL ARRIVALS.....	6
2.1 INTERNATIONAL ARRIVALS BY TRANSPORT MODE 2004-2014.....	6
2.2 TOTAL ARRIVALS BY TRANSPORT MODE AND MONTH 2014.....	6
2.3 TOTAL AIR ARRIVALS BY PASSENGER TYPE AND MONTH 2014.....	7
2.4 TOTAL AIR VISITORS BY COUNTRY OF USUAL RESIDENCE 2014.....	7
2.5 VISITORS ARRIVALS BY PURPOSE OF VISIT 2014.....	8
2.6 INTERNATIONAL AIR VISITORS BY AGE GROUP 2014.....	8
3. INTERNATIONAL DEPARTURES.....	9
3.1 AIR DEPARTURES BY GENDER AND MONTH 2014.....	9
3.2 AIR DEPARTURES BY COUNTRY OF USUAL RESIDENCE, 2014.....	9
4. EXPLANATORY NOTES.....	10
4.1 PURPOSE.....	10
4.2 COVERAGE.....	10
4.3 SOURCE OF DATA.....	10
4.4 DATA LIMITATIONS.....	10
5. GLOSSARY.....	11

## List of Figures

Figure 1: Total International Arrivals and Departures 2004 – 2014	4
Figure 2: International Arrivals by Transport Mode 2004 – 2014	6
Figure 3: Monthly Arrivals by Mode of Transport 2014	7
Figure 4: Total Air Arrivals by Passenger Type 2014	7
Figure 5: Total Air Visitors by Country of Usual Residence 2014	8
Figure 6: Visitors by Purpose of Visit 2014	8
Figure 7: Visitors by Age Group 2014	9
Figure 8: Total Air Departures by Gender and Month 2014	10
Figure 9: Air Departures by Country of Usual Residence 2014	10

## List of Tables

Table 1.1: Total international Arrivals and Departures by Annual Percentage Change	5
--	---

## List of Statistical Tables for Year 2014

Table 1: Monthly Arrival and Departure by Mode of Travel and Net Migration, 2010 - 2014	13
Table 2: Arrivals by Age group, Passenger Type, Gender and month 2014	14
Table 3: Air Visitors by Country of Residence and Purpose of Visit, 2014	14
Table 4: Total Air Arrivals by Country of Residence and Purpose of Visit, 2014	15
Table 5: Air Departures by Age Group and Passengers Type for the year 2014	15
Table 6: Total Air Departures by Country of Residence and Gender for the year 2014	16

# 1. MAIN FEATURES

## 1.1 General

- a. Net overseas migration is one component of population change used to estimate the Tonga usually resident population, as are births and deaths.
- b. Individuals are considered to be residents when they reside in Tonga for at least one year
- c. Due to the limitation on the data collected we are unable at this stage to determine whether arrivals and departures are of a long term or short term duration.
- d. For 2014, total international arrivals were 92,374 and total departures were 94,090, a net outflow of 1,716
- e. This means that there are more persons departing the Kingdom than persons arriving for the year 2014

## 1.2 Total International Arrivals and Departures

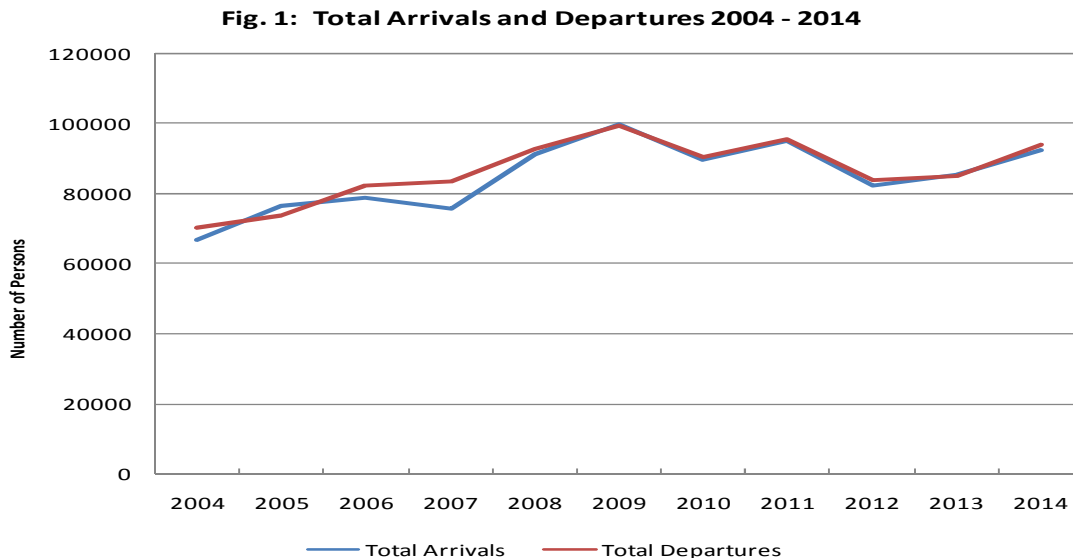


Fig 1. Shows the Total Arrivals and Departures to and from the Kingdom of Tonga for the years 2004 to 2014. The above diagram shows a slightly upward trend from 2004 to 2009 and both declined in 2010, increased again in 2011 and again declined in 2012. In the year 2013 there were more people arriving the Kingdom than departing. Year 2014 shows that there was a slightly increase in departures compared to arrivals.

### 1.3 Total International Arrivals and Departures by Annual Percentage Change

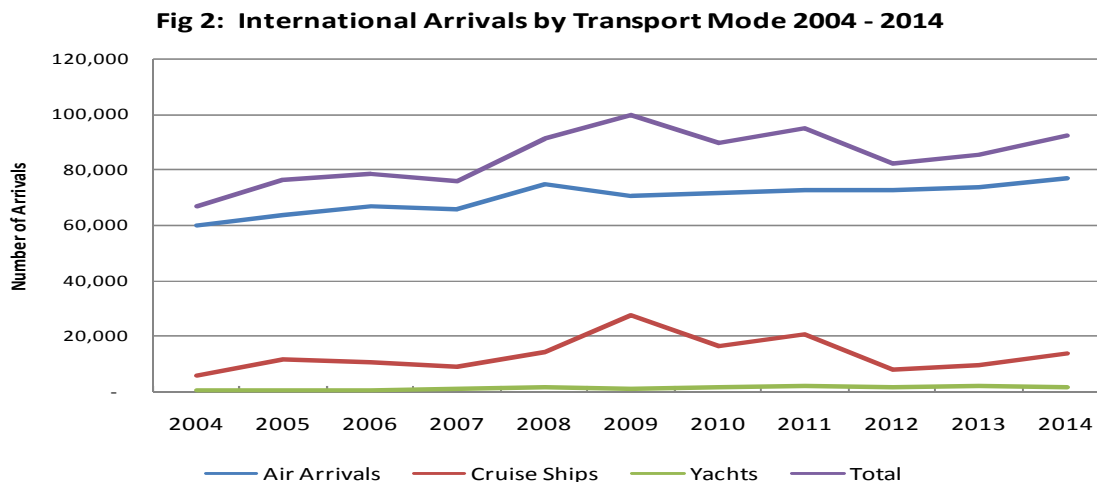
Table 1.1 Total International Arrivals and Departures 2004 - 2014

Year	Total Arrivals	% Change	Total Departures	% Change
2004	66,639	-	70,206	-
2005	76,286	14.5	73,540	4.7
2006	78,652	3.1	82,268	11.9
2007	75,587	-3.9	83,416	1.4
2008	91,128	20.6	92,890	11.4
2009	99,803	9.5	99,360	7.0
2010	89,506	-10.3	90,607	-8.8
2011	94,960	6.1	95,607	5.5
2012	82,400	-13.2	83,805	-12.3
2013	85,473	3.7	85,134	1.6
2014	92,374	8.1	94,090	10.5

Table 1 shows the total arrivals with the highest point in 2009 with 99,803 persons arriving in the Kingdom. The largest increase in arrivals in 2008 was 20.6% from 2007. In 2014, there was an increase of 8.1% from 2013. Similarly to total arrivals, total departures had the highest point in 2009 with 99,360 persons leaving Tonga. There was an increase on departures of 10.5% from 2013.

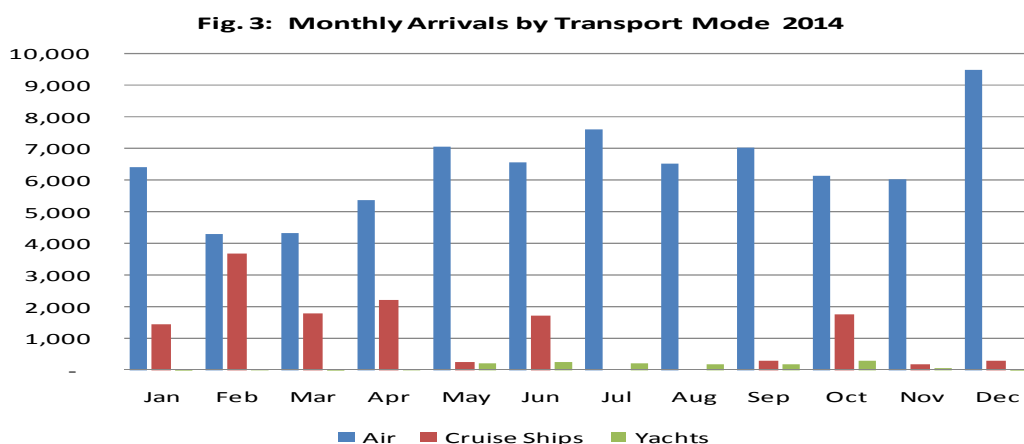
## 2. INTERNATIONAL ARRIVALS

### 2.1 International Arrivals by Transport Mode 2004 - 2014



The above graph shows the total international arrivals to the Kingdom by transport mode for the year 2004 - 2014. It clearly shows that international air arrivals dominated the total international arrivals to the Kingdom followed by arrivals on cruise ships and then arrivals by yachts. The increased of total arrivals in 2009 and 2011 is mainly due to the increase in arrivals by cruise ships which was 27,641 in 2009 compared to 14,599 in 2008 and 20,519 in 2011 compared with 16,265 in 2010. Yachts arrivals increased from 1,816 in 2012 to 2,045 in 2013.

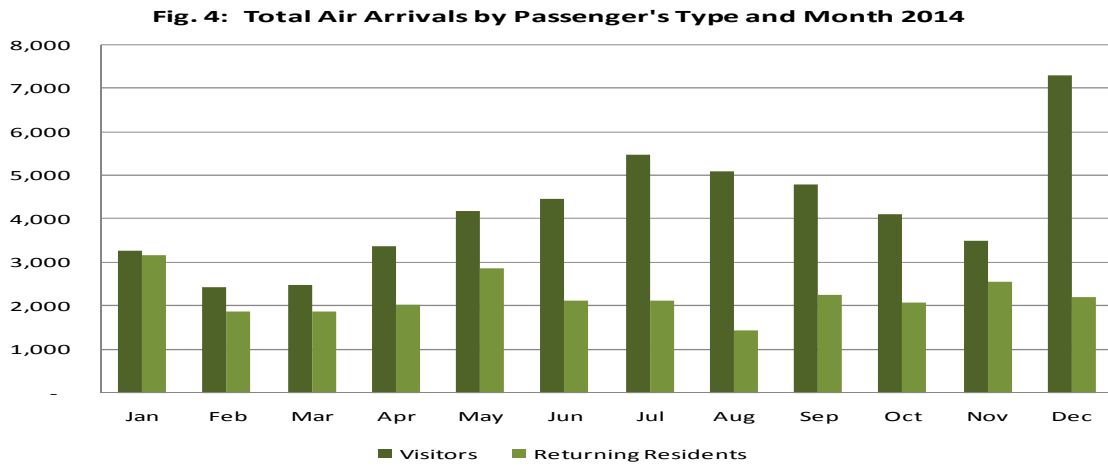
### 2.2 Total Arrivals by Transport Mode and Month 2014



The above graph illustrates the total arrivals by transport mode and month for the year 2014. The air arrivals were highest in December (9,507) followed by July (7,605). Cruise ships visited the Kingdom in the month of January, February, March, April, May, June, September, October,

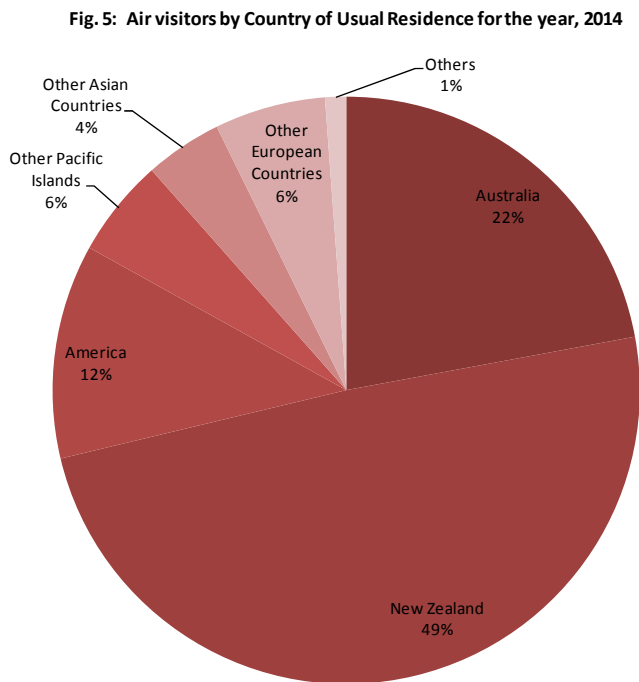
November and December with the highest number of cruise ship arrivals was in February (3,677) followed by April (2,224)

### 2.3 Total Air Arrivals by Passenger Type and Month 2014



The highest number of returning residents arrived in Tonga was in January 2014. Visitors arrivals had the highest in December with Tongans residing overseas visiting Tonga for Christmas Holidays.

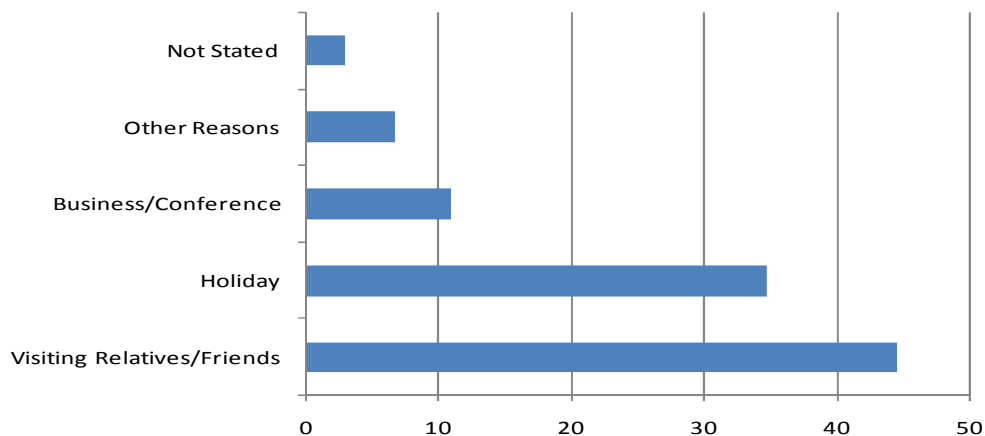
### 2.4 Total Air Visitors by Country of Usual Residence 2014



New Zealand remains as the leading country in visitors arrivals by country of usual residence accounting for 49.2% (24,797). This was followed by Australia with 22.1% (11,150) and the United States 11.8% (5,942)

## 2.5 Visitors Arrivals by Purpose of Visit 2014

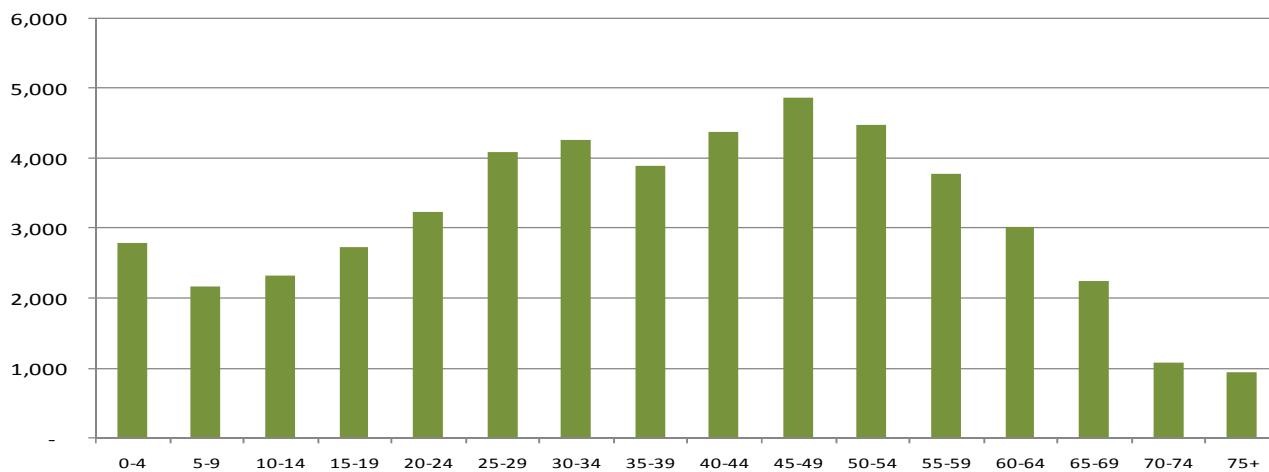
**Fig. 6: Air Visitors by Purpose of Visit for the year, 2014**



Most visitors to the Kingdom were visiting relatives and friends 44.5% (22,429). This was followed by 34.7% (17,525) who were here on Holiday/Vacation

## 2.6 International Air Visitors by Age Group 2014

**Fig. 7: Air Visitors by Age Group - 2014**

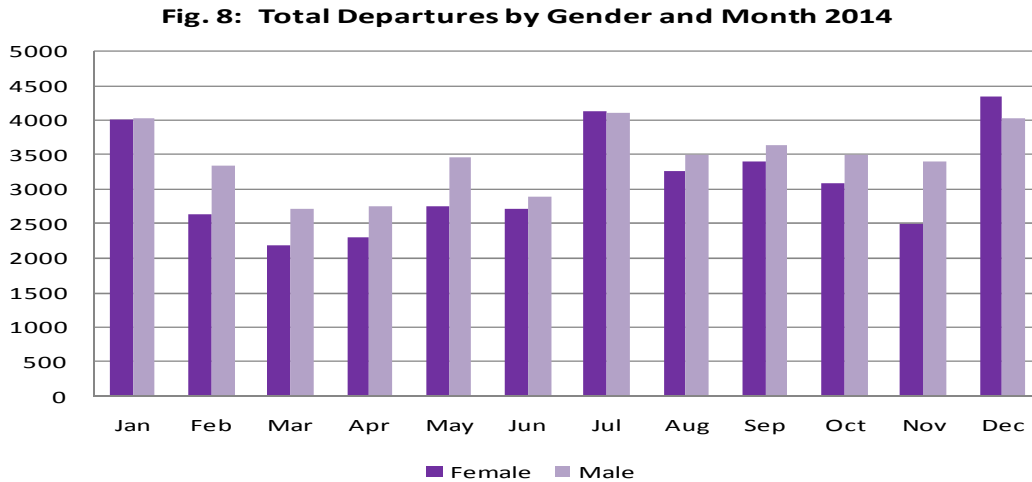


The majority of the air visitors were in the 45 – 49 (4,877) age group followed by 50 – 54 (4,488) age group



### 3 International Departures

#### 3.1 Air Departures by Gender and Month 2014



The above figure shows that the lowest departures for female was in the month of March followed by April. The highest number of departures was in the month of December with 4,341 for females and 4,101 for females in the month of July.

#### 3.2 Air Departures by Country of Usual Residence, 2014

Fig. 9: Air Departures by Country of Usual Residence for the year 2014

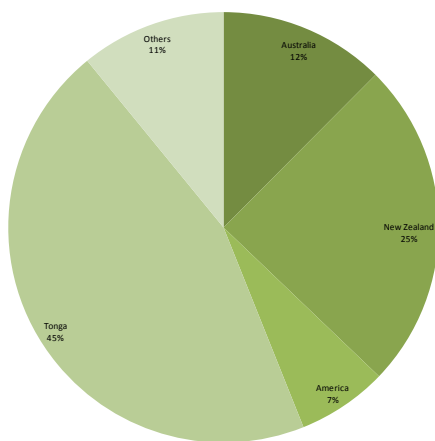


Figure 9 shows that most of the persons departing in the year 2014 were persons residing in the Kingdom of Tonga 35,526 (45.2)% followed by New Zealand 19,377 (24.7)% and Australia 9,795 (12.5)%.

## 4 EXPLANATORY NOTES

### 4.1 PURPOSE

The purpose of this bulletin is to give an overview of total international arrivals and departures and their main social and economic characteristics.

Statistics on Overseas Arrivals and Departures related to the number of movements of travelers rather than the number of travelers (i.e. the multiple movements of individual persons during a given reference period are all counted).

### 4.2 COVERAGE

This bulletin covers all international arrivals and departures from the Kingdom of Tonga, including yachts and those through Lupepau'u Airport and all outer islands, during 2014. Final totals of arrivals and departures are based on the reconciliation between the Ministry of Foreign Affairs and Immigration Electronic data, Customs Wharf Register and Air Terminal Services Manifest.

### 4.3 SOURCE OF DATA

Data is extracted from the arrival and departure cards of the Immigration Department, Ministry of Foreign Affairs, and Customs vessel and yacht log book. The Statistics Department reconciles the figures from the Air Terminal Services Manifest and Ports Authority Manifest to produce final published data.

### 4.4 DATA LIMITATIONS

Passengers on yachts and ships do not complete arrival and departure cards therefore we are unable to provide details on Age, Sex and Purpose of visit.

Due to the limitation on data collected, we are unable at this stage to determine whether arrivals and departures are of a long term or short term duration.

## 5 GLOSSARY

- A Visitor is a person other than a Tongan citizen, permit holder and exempted person, who usually stays at least 24 hours in the kingdom, or who stays overnight in accommodation within Tonga. This refers to passengers arriving by air and yacht only.
- Cruise Ship Passengers are defined as those who arrive and depart in the same vessel which is a cruise trip, and use that vessel's accommodation during their stay in Tonga. They are also known as "Excursionist"
- A Returning Resident is a person who has the Kingdom of Tonga as their permanent address for more than six months of the year and returns to Tonga after a trip overseas. Tongan residence is self-defined as reported by travelers when completing the Passenger Arrival Card.
- Main reason for journey On arrival in Tonga, all overseas visitors and Tongan residents are asked to state their purpose of journey. Statistics are published using the following categories: Holiday, Business, Visiting friends and /or relatives, Conference and Others.
- Mode of Transport Only air, yacht and cruise ships passengers are included. Passenger/crew on cargo, navy or special vessels are excluded.

The Statistics Department wishes to acknowledge the cooperation of the Immigration Department of the Ministry of Foreign Affairs and the Custom Department of the Ministry of Revenue Services, Air Terminal Services, Ports Authority for making it possible to publish these important statistics.

**Table 1. Monthly Arrival and Departure by Mode of Travel and Net Migration, 2010 - 2014**

Period	Visitors Arrivals				Returning Residents				Total Arrivals				Total Departures				Net Migration
	Air	Ship	Yacht	Total	Air	Ship	Yacht	Total	Air	Ship	Yacht	Total	Air	Ship	Yacht	Total	
2005	42,437	11,840	943	55,220	21,066			21,066	63,503	11,840	943	76,286	60,276	11,871	1,393	73,540	2,746
2006	46,268	10,809	868	57,945	20,707			20,707	66,975	10,809	868	78,652	68,637	13,049	582	82,268	(3,616)
2007	43,344	8,790	1,140	53,274	22,313			22,313	65,657	8,790	1,140	75,587	71,325	10,461	1,630	83,416	(7,829)
2008	50,462	14,599	1,828	66,889	24,239			24,239	74,701	14,599	1,828	91,128	76,704	14,602	1,584	92,890	(1,762)
2009	45,711	27,641	1,317	74,669	25,134			25,134	70,845	27,641	1,317	99,803	70,949	27,150	1,261	99,360	443
2010	47,081	16,265	1,659	65,005	24,501			24,501	71,582	16,265	1,659	89,506	72,533	16,244	1,830	90,607	(1,101)
2011	46,005	20,519	1,849	68,373	26,587			26,587	72,592	20,519	1,849	94,960	73,589	20,550	1,468	95,607	(647)
2012	47,457	7,957	1,816	57,230	25,170			25,170	72,627	7,957	1,816	82,400	74,098	7,987	1,720	83,805	(1,405)
2013	48,188	9,432	2,045	59,665	25,808			25,808	73,996	9,432	2,045	85,473	73,938	9,427	1,769	85,134	339
2014	50,436	13,733	1,632	65,801	26,573			26,573	77,009	13,733	1,632	92,374	78,604	13,724	1,762	94,090	(1,716)
<b>2010</b>																	
January	3,158	646	4	3,808	3,019			3,019	6,177	646	4	6,827	7,822	642	-	8,464	(1,637)
February	2,379	-	5	2,384	2,083			2,083	4,462	-	5	4,467	5,096	-	1	5,097	(630)
March	3,134	853	5	3,992	1,730			1,730	4,864	853	5	5,722	4,993	850	7	5,850	(128)
April	2,818	2,802	30	5,650	1,906			1,906	4,724	2,802	30	7,556	5,101	2,806	34	7,941	(385)
May	3,670	5,303	177	9,150	2,230			2,230	5,900	5,303	177	11,380	4,929	5,302	107	10,338	1,042
June	4,701	-	275	4,976	1,888			1,888	6,589	-	275	6,864	5,173	-	344	5,517	1,347
July	4,900	-	238	5,138	1,814			1,814	6,714	-	238	6,952	7,428	-	386	7,814	(862)
August	4,216	-	246	4,462	1,848			1,848	6,064	-	246	6,310	6,342	-	231	6,573	(263)
September	4,576	5,275	188	10,039	1,756			1,756	6,332	5,275	188	11,795	6,379	5,253	165	11,797	(2)
October	3,467	-	352	3,819	1,809			1,809	5,276	-	352	5,628	6,107	-	403	6,510	(882)
November	3,569	1,386	126	5,081	2,378			2,378	5,947	1,386	126	7,459	5,990	1,391	130	7,511	(52)
December	6,493	-	13	6,506	2,040			2,040	8,533	-	13	8,546	7,173	-	22	7,195	1,351
<b>2011</b>																	
January	2,844	-	2	2,846	3,185			3,185	6,029	-	2	6,031	7,755	-	-	7,755	(1,724)
February	2,302	6,847	14	9,163	1,985			1,985	4,287	6,847	14	11,148	6,031	6,859	5	12,895	(1,747)
March	2,477	1,407	16	3,900	1,947			1,947	4,424	1,407	16	5,847	4,526	1,411	18	5,955	(108)
April	3,520	3,038	37	6,595	2,152			2,152	5,672	3,038	37	8,747	5,367	3,045	15	8,427	320
May	3,812	-	250	4,062	2,588			2,588	6,400	-	250	6,650	5,565	-	89	5,654	996
June	4,323	-	242	4,565	1,913			1,913	6,236	-	242	6,478	5,240	-	194	5,434	1,044
July	5,280	2,376	239	7,895	1,998			1,998	7,278	2,376	239	9,893	7,415	2,378	232	10,025	(132)
August	4,486	-	419	4,905	1,889			1,889	6,375	-	419	6,794	7,266	-	199	7,465	(671)
September	3,561	-	242	3,803	2,063			2,063	5,624	-	242	5,866	6,315	4,391	281	10,987	(5,121)
October	3,155	4,387	257	7,799	2,164			2,164	5,319	4,387	257	9,963	5,927	-	280	6,207	3,756
November	2,996	-	112	3,108	2,354			2,354	5,350	-	112	5,462	5,252	-	135	5,387	75
December	7,249	2,464	19	9,732	2,349			2,349	9,598	2,464	19	12,081	6,930	2,466	20	9,416	2,665
<b>2012</b>																	
January	3,043	-	-	3,043	3,018			3,018	6,061	-	-	6,061	8,296	-	-	8,296	(2,235)
February	2,241	1,220	4	3,465	1,913			1,913	4,154	1,220	4	5,378	5,637	1,365	3	7,005	(1,627)
March	2,629	865	15	3,509	1,927			1,927	4,556	865	15	5,436	4,866	816	10	5,692	(256)
April	3,022	3,063	44	6,129	1,847			1,847	4,869	3,063	44	7,976	5,044	2,999	46	8,089	(113)
May	3,497	-	302	3,799	2,486			2,486	5,983	-	302	6,285	5,310	-	83	5,393	892
June	4,892	-	182	5,074	1,836			1,836	6,728	-	182	6,910	4,764	-	249	5,013	1,897
July	5,789	-	235	6,024	1,880			1,880	7,669	-	235	7,904	7,677	-	194	7,871	33
August	4,286	-	254	4,540	1,986			1,986	6,272	-	254	6,526	6,966	-	269	7,235	(709)
September	4,156	-	351	4,507	1,966			1,966	6,122	-	351	6,473	5,939	-	313	6,252	221
October	3,909	1,817	315	6,041	1,725			1,725	5,634	1,817	315	7,766	6,566	1,815	334	8,715	(949)
November	4,052	618	86	4,756	2,459			2,459	6,511	618	86	7,215	5,914	618	193	6,725	490
December	5,941	374	28	6,343	2,127			2,127	8,068	374	28	8,470	7,119	374	26	7,519	951
<b>2013</b>																	
January	2,927	922	9	3,858	3,085			3,085	6,012	922	9	6,943	7,440	922	8	8,370	(1,427)
February	2,621	1,310	2	3,933	1,816			1,816	4,437	1,310	2	5,749	6,077	1,310	-	7,387	(1,638)
March	2,797	626	11	3,434	1,880			1,880	4,677	626	11	5,314	5,035	626	10	5,671	(357)
April	3,088	3,205	50	6,343	2,096			2,096	5,184	3,205	50	8,439	5,100	3,204	14	8,318	121
May	3,965	-	328	4,293	2,740			2,740	6,705	-	328	7,033	5,815	-	132	5,947	1,086
June	4,693	700	182	5,575	2,046			2,046	6,739	700	182	7,621	5,411	700	193	6,304	1,317
July	5,415	-	282	5,697	2,183			2,183	7,598	-	282	7,880	7,747	-	220	7,967	(87)
August	4,753	-	305	5,058	2,051			2,051	6,804	-	305	7,109	7,227	-	267	7,494	(385)
September	4,068	1,954	339	6,361	1,711			1,711	5,779	1,954	339	8,072	5,579	1,950	291	7,820	252
October	4,037	-	403	4,440	1,789			1,789	5,826	-	403	6,229	6,111	-	384	6,495	(266)
November	3,395	715	121	4,231	2,363			2,363	5,758	715	121	6,594	5,165	715	232	6,112	482
December	6,429	-	13	6,442	2,048			2,048	8,477	-	13	8,490	7,231	-	18	7,249	1,241
<b>2014</b>																	
January	3,259	1,446	3	4,708	3,167			3,167	6,426	1,446	3	7,875	8,028	1,444	-	9,472	(1,597)
February	2,441	3,677	24	6,142	1,861			1,861	4,302	3,677	24	8,003	5,958	3,676	14	9,648	(1,645)
March	2,484	1,817	10	4,311	1,880			1,880	4,364	1,817	10	6,191	4,885	1,811	22	6,718	(527)
April	3,363	2,224	57	5,644	2,034			2,034	5,397	2,224	57	7,678	5,063	2,227	40	7,330	348
May	4,189	260	243	4,692	2,872			2,872	7,061	260	243	7,564	6,228	260	94	6,582	982
June	4,463	1,739	256	6,458	2,122			2,122	6,585	1,739	256	8,580	5,605	1,737	294	7,636	944
July	5,477	-	233	5,710	2,128			2,128	7,605	-	233	7,838	8,213	-	286	8,499	(661)
Aug	5,090	-	201	5,291	1,432			1,432	6,522	-	201	6,723	6,753	-	192	6,945	(222)
Sep	4,779	308	209	5,296	2,248			2,248	7,027	308	209	7,544	7,035	308	271	7,614	(70)
Oct	4,102	1,760	307	6,169	2,064			2,064	6,166	1,760	307	8,233	6,588	1,759	381	8,728	(495)
Nov	3,488	199	81	3,768	2,559			2,559	6,047	199	81	6,327	5,892	199	155	6,246	81
Dec	7,301	303	8	7,612	2,206			2,206	9,507	303	8	9,818	8,356	303	13	8,672	1,146

Table 2. Total Air Arrivals by Age Group and Month 2014

Age Group	Jan	Feb	Mar	Apr	May	Jun	Jul	Aug	Sep	Oct	Nov	Dec	Total
0-4	346	199	172	257	371	303	361	258	270	318	272	658	3,785
5-9	389	148	115	185	187	233	341	155	196	213	183	567	2,912
10-14	532	198	137	200	213	288	402	178	263	145	153	673	3,382
15-19	599	271	166	224	230	344	489	194	371	221	261	735	4,105
20-24	446	387	296	433	615	521	480	398	514	418	576	801	5,885
25-29	531	348	405	522	764	599	658	608	667	562	550	754	6,967
30-34	537	362	403	490	689	559	665	612	677	612	552	707	6,865
35-39	443	338	355	472	591	547	670	583	618	512	522	656	6,307
40-44	543	352	432	457	624	615	707	605	665	597	527	752	6,876
45-49	544	366	432	549	724	604	717	611	660	641	573	855	7,276
50-54	399	357	406	455	546	532	605	656	641	539	530	730	6,396
55-59	356	287	334	398	484	483	526	541	527	465	453	572	5,426
60-64	278	257	279	296	375	381	412	427	402	377	362	445	4,291
65-69	254	201	212	220	331	297	285	342	287	289	264	281	3,263
70-74	106	105	102	119	145	141	154	193	146	143	125	157	1,636
75+	123	126	118	120	172	138	135	160	123	114	144	164	1,636
<b>Total</b>	<b>6,426</b>	<b>4,302</b>	<b>4,364</b>	<b>5,397</b>	<b>7,061</b>	<b>6,585</b>	<b>7,605</b>	<b>6,522</b>	<b>7,027</b>	<b>6,166</b>	<b>6,047</b>	<b>9,507</b>	<b>77,009</b>
<b>% Distribution</b>	<b>8.3</b>	<b>5.6</b>	<b>5.7</b>	<b>7.0</b>	<b>9.2</b>	<b>8.6</b>	<b>9.9</b>	<b>8.5</b>	<b>9.1</b>	<b>8.0</b>	<b>7.9</b>	<b>12.3</b>	<b>100.0</b>
<b>GENDER</b>													
Male	3,218	2,203	2,394	2,823	3,786	3,389	3,819	3,417	3,796	3,213	3,139	4,691	<b>39,888</b>
Female	3,208	2,099	1,970	2,574	3,275	3,196	3,786	3,105	3,231	2,953	2,908	4,816	<b>37,121</b>
<b>Total</b>	<b>6,426</b>	<b>4,302</b>	<b>4,364</b>	<b>5,397</b>	<b>7,061</b>	<b>6,585</b>	<b>7,605</b>	<b>6,522</b>	<b>7,027</b>	<b>6,166</b>	<b>6,047</b>	<b>9,507</b>	<b>77,009</b>
<b>PASSENGERS TYPE</b>													
Returning Residents	3,167	1,861	1,880	2,034	2,872	2,122	2,128	1,432	2,248	2,064	2,559	2,206	<b>26,573</b>
Visitors	3,259	2,441	2,484	3,363	4,189	4,463	5,477	5,090	4,779	4,102	3,488	7,301	<b>50,436</b>
<b>Total</b>	<b>6,426</b>	<b>4,302</b>	<b>4,364</b>	<b>5,397</b>	<b>7,061</b>	<b>6,585</b>	<b>7,605</b>	<b>6,522</b>	<b>7,027</b>	<b>6,166</b>	<b>6,047</b>	<b>9,507</b>	<b>77,009</b>

Table 3: Air Visitors by Country of Residence and Purpose of Visit, 2014

Country of Usual Residence	Purpose of Visit						
	Total	% Distribution	Holiday/Vacation	Business/Conference	Visiting Relative/Friends	Other Reasons	Not Stated
Australia	<b>11,150</b>	<b>22.1</b>	3,972	980	5,144	737	317
New Zealand	<b>24,797</b>	<b>49.2</b>	7,623	2,170	12,988	1,363	654
Fiji	<b>1,831</b>	<b>3.6</b>	220	809	423	287	92
American Samoa	<b>81</b>	<b>0.2</b>	7	6	57	3	7
Western Samoa	<b>270</b>	<b>0.5</b>	37	119	80	30	3
Other Pacific Islands	<b>547</b>	<b>1.1</b>	73	226	129	85	34
Japan	<b>644</b>	<b>1.3</b>	311	157	99	50	26
China	<b>760</b>	<b>1.5</b>	197	249	120	93	100
India	<b>45</b>	<b>0.1</b>	12	19	7	5	1
Korea	<b>110</b>	<b>0.2</b>	52	23	27	7	1
Other Asian Countries	<b>589</b>	<b>1.2</b>	328	126	67	55	13
UK	<b>714</b>	<b>1.4</b>	509	49	102	47	7
Germany	<b>803</b>	<b>1.6</b>	725	8	45	15	8
France	<b>302</b>	<b>0.6</b>	217	39	20	21	5
Italy	<b>160</b>	<b>0.3</b>	144	5	6	-	5
Other European Countries	<b>1,109</b>	<b>2.2</b>	990	34	49	25	11
All African Countries	<b>50</b>	<b>0.1</b>	26	7	10	5	2
United States of America	<b>5,942</b>	<b>11.8</b>	1,747	465	2,943	575	213
Canada	<b>282</b>	<b>0.6</b>	205	17	34	24	2
Other American Countries	<b>251</b>	<b>0.5</b>	129	17	78	16	11
<b>Total</b>	<b>50,436</b>	<b>100.0</b>	<b>17,525</b>	<b>5,525</b>	<b>22,429</b>	<b>3,444</b>	<b>1,512</b>
<b>Percent Distribution</b>	<b>100.0</b>		<b>34.7</b>	<b>11.0</b>	<b>44.5</b>	<b>6.8</b>	<b>3.0</b>

Table 4: Total Air Arrivals by Country of Residence and Purpose of Visit, 2013

Country of Usual Residence	Purpose of Visit						
	Total	% Distribution	Holiday/Vacation	Business/Conference	Visiting Relatives/Friends	Other Reasons	Not Stated
Australia	10,041	13.6	3,796	903	4,400	456	486
New Zealand	24,476	33.1	8,571	1,900	11,761	810	1,434
Fiji	1,587	2.1	221	678	404	160	124
American Samoa	12	0.0	1	-	4	3	4
Western Samoa	246	0.3	42	123	61	9	11
Tonga	25,808	34.9	667	185	1,010	184	23,762
Other Pacific Islands	706	1.0	90	416	114	66	20
Japan	630	0.9	282	118	108	91	31
China	600	0.8	184	175	119	86	36
India	45	0.1	7	16	9	9	4
Korea	115	0.2	63	19	25	5	3
Other Asian Countries	451	0.6	208	138	65	25	15
UK	703	1.0	491	72	86	27	27
Germany	794	1.1	654	23	69	21	27
France	315	0.4	158	80	40	36	1
Italy	145	0.2	124	7	13	-	1
Other European Countries	1,089	1.5	929	50	81	11	18
All African Countries	34	0.0	24	4	4	2	-
United States of America	5,789	7.8	1,819	469	2,894	329	278
Canada	241	0.3	175	23	32	7	4
Other American Countries	169	0.2	70	28	43	11	17
<b>Total</b>	<b>73,996</b>	<b>100.0</b>	<b>18,576</b>	<b>5,427</b>	<b>21,342</b>	<b>2,348</b>	<b>26,303</b>
<b>% Distribution</b>	<b>100.0</b>		<b>25.1</b>	<b>7.3</b>	<b>28.8</b>	<b>3.2</b>	<b>35.5</b>

Table 5: AIR DEPARTURES by Age Group and Passanger's Type for the year 2014

Age Group	Departing Residents	Percent Distribution	Visitors	Percent Distribution	Total	Percent Distribution
0 - 4	1,190	1.5	2,610	3.3	3,800	4.8
5 - 9	1,072	1.4	2,125	2.7	3,197	4.1
10 - 14	1,295	1.6	2,204	2.8	3,498	4.5
15 - 19	1,925	2.4	2,586	3.3	4,511	5.7
20 - 24	3,457	4.4	2,944	3.7	6,401	8.1
25 - 29	3,435	4.4	3,590	4.6	7,025	8.9
30 - 34	3,346	4.3	3,527	4.5	6,873	8.7
35 - 39	3,180	4.0	3,120	4.0	6,301	8.0
40 - 44	3,391	4.3	3,485	4.4	6,876	8.7
45 - 49	3,575	4.5	3,892	5.0	7,467	9.5
50 - 54	2,786	3.5	3,715	4.7	6,500	8.3
55 - 59	2,221	2.8	3,168	4.0	5,389	6.9
60 - 64	1,675	2.1	2,566	3.3	4,241	5.4
65 - 69	1,262	1.6	1,867	2.4	3,129	4.0
70 - 74	791	1.0	880	1.1	1,671	2.1
75+	870	1.1	738	0.9	1,609	2.0
NS	54	0.1	60	0.1	115	0.1
<b>All Ages</b>	<b>35,526</b>	<b>45.2</b>	<b>43,078</b>	<b>54.8</b>	<b>78,604</b>	<b>100.0</b>
<b>YACHT</b>	-	-	1,762	0	1,762	0
<b>CRUISE SHIP</b>	-	-	13,724	0	13,724	0
<b>Total</b>	<b>35,526</b>	<b>45.2</b>	<b>58,564</b>	<b>54.8</b>	<b>94,090</b>	<b>100.0</b>

**Table 6. Total Departures by Country of Residence and Gender for the year 2014**

Country of Usual Residence	Male	Percent	Female	Percent	Total	Percent
	No.	Distribution	No.	Distribution	No.	Distribution
Australia	4,647	5.9	5,148	6.5	9,795	12.5
New Zealand	9,406	12.0	9,970	12.7	19,377	24.7
Fiji	1,009	1.3	618	0.8	1,628	2.1
American Samoa	16	0.0	18	0.0	35	0.0
Western Samoa	113	0.1	112	0.1	225	0.3
Tonga	19,680	25.0	15,847	20.2	35,526	45.2
Other Pacific Islands	230	0.3	173	0.2	403	0.5
Japan	405	0.5	206	0.3	610	0.8
China	635	0.8	361	0.5	996	1.3
India	48	0.1	5	0.0	53	0.1
Korea	80	0.1	62	0.1	142	0.2
Other Asian Countries	297	0.4	226	0.3	523	0.7
UK	517	0.7	383	0.5	900	1.1
Germany	419	0.5	382	0.5	802	1.0
France	220	0.3	145	0.2	366	0.5
Italy	98	0.1	76	0.1	174	0.2
Other European Countries	677	0.9	578	0.7	1,255	1.6
All African Countries	31	0.0	23	0.0	54	0.1
United States of America	2,569	3.3	2,749	3.5	5,318	6.8
Canada	119	0.2	130	0.2	249	0.3
Other American Countries	92	0.1	84	0.1	176	0.2
<b>Total</b>	<b>41,309</b>	<b>52.6</b>	<b>37,295</b>	<b>47.4</b>	<b>78,604</b>	<b>100.0</b>