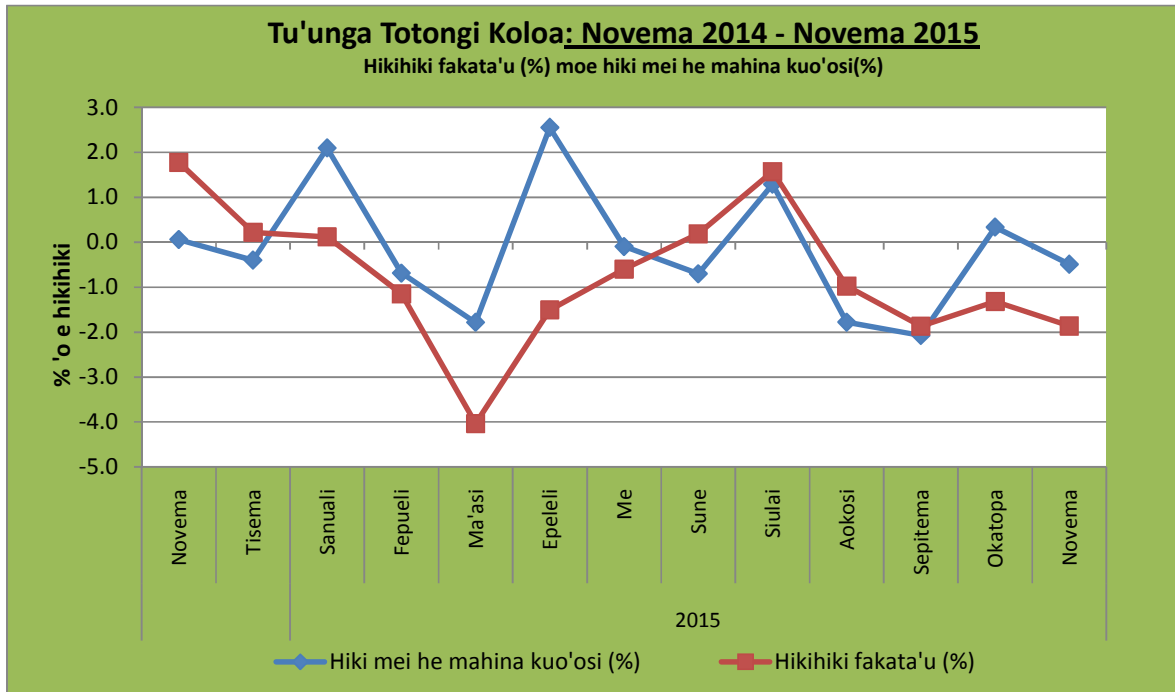




**PULE'ANGA FAKATU'I 'O TONGA.  
POTUNGAUE SETISITIKA.  
ONGOONGO**

**Na'e holo peseti 'e 0.5 'a e tu'unga totongi koloa 'i Novema 2015. Pea koe hikihiki fakata'u 'oe totongi e koloa na'e holo peseti 'e 1.9.**



Ko e **tu'unga 'o e totongi koloa** ki he mahina **Novema 2015**, 'i hono fakaha mei he **Potungae Sitetisitika**, na'e holo 'a e totongi 'o e koloa 'aki 'a e **peseti 'e 0.5** mei '**Okatopa 2015**, na'e holo peseti **1.1** 'a e totongi 'o e koloa **fakalotofonua** pea holo peseti 'e **0.1** 'a e **koloa humai**. Koe ongo mahina 'e ua kimu'a, na'e hiki peseti 'e **0.3** 'i '**Okatopaa 2015** pea holo peseti 'e **2.1** 'i **Sepitema 2015**.

Ko e **Hikihiki fakata'u** 'o e totongi koloa ki he mahina ko **Novema 2015** na'e holo **peseti 1.9** fakahoa kihe **holo peseti 1.3** 'o e mahina kimu'a '**Okatopa 2015**. Na'e hiki 'aki 'a e **peseti 'e 2.4** 'ae totongi koloa fakalotofonua kae holo **peseti 'e 4.7** 'a e koloa hu mai. Koe **hiki fakata'u 'i Novema 2014** na'e peseti 'e **1.8**.

Koe tu'unga 'oe **koloa me'atokoni** na'e holo **peseti 'e 1.0** mei '**Okatopa**. Koe holo ko'eni na'e makatu'unga ia mei he holo 'ihe totongi 'o e ngaahi **Koloa me'atokoni** fakaloto fonua .Na'e holo moe totongi 'oe ngaahi koloa me'atokoni **humai** 'e ni'ihii.

Koe **Koloa Naunau Langa**, Na'e holo **peseti 0.1** makatu'unga mei holo 'ae totongi 'oe **vali** ihe mahina **Novema 2015**.

Koe **Koloa Naunau Faka'api** na'e tu'u tatau pe 'ihe mahina **Novema 2015** 'i hono fakahoa kihe mahina '**Okatopa 2015**.

Koe koloa **Tapaka**, '**olokaholo moe kava tonga** na'e hiki peseti **0.6** makatu'unga ia mei he hiki ihe totongi 'oe **Tapaka**

Koe **Koloa Fefononga 'aki** na'e holo peseti **0.6** mei '**Okatopa 2015**, makatu'unga ia mei he holo 'ihe totongi 'oe **penisini** .

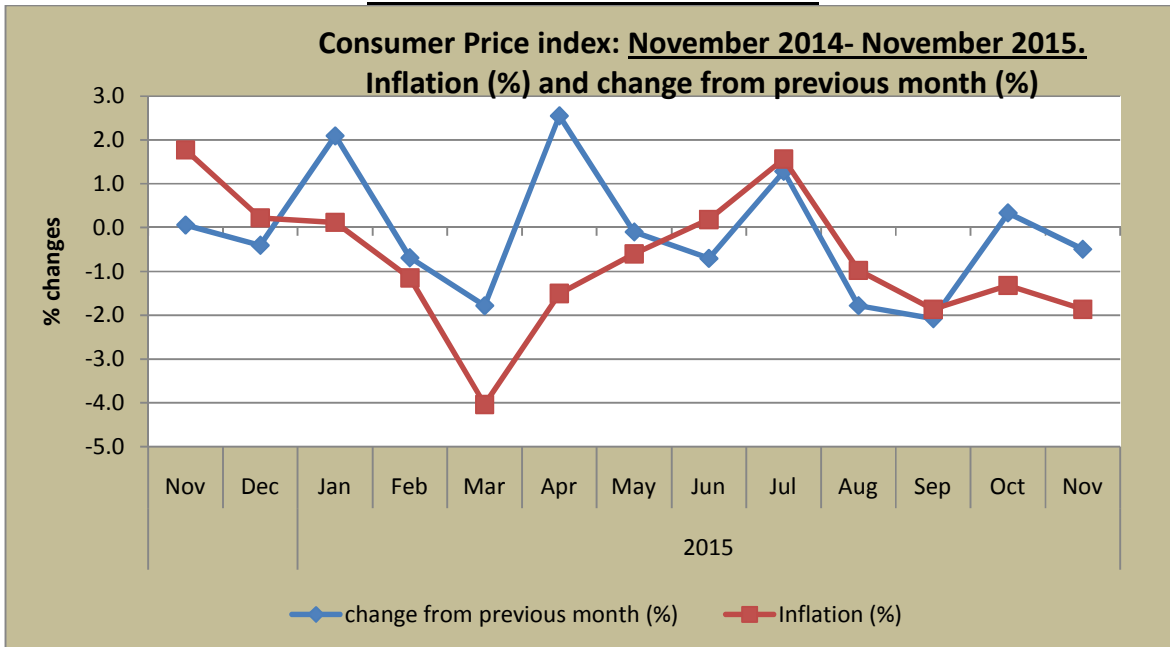
Koe **koloa vala moe su moe ngaahi koloa kehe** na'e tu'u tatau ihe mahina **Novema 2015**.

Koe ngaahi fakaikiiki 'oe fakamatala ni 'e ma'u atu ia mei he Potungae Sitetisitika pe ko ho'o vakai ki he'emaui website [www.spc.int/prism/tonga/](http://www.spc.int/prism/tonga/)



GOVERNMENT OF TONGA  
STATISTICS DEPARTMENT  
MEDIA RELEASE

**Consumer Price Index for November 2015 recorded a decrease of 0.5%**  
**With an Annual Inflation Rate of -1.9%**



The **Consumer Price Index (CPI)** for **November 2015** recorded a decrease of **0.5%** from **October 2015 (106.3)** and now stands at **105.8**. In comparison with the previous month, local index recorded a decrease of **1.1%** and import index decreased by **0.1%**. For the previous two months, **October 2015** recorded an increase of **0.3%** and **September 2015** decreased by **2.1%**.

The **annual rate of inflation for November declined by 1.9% (Deflation)** compares to **1.3% deflation** in previous month. The **annual inflation** for the same month of previous year, **November 2014 was 1.8%**. Local Index marked an increase by **2.4%** while Imported Index decreased by **4.7%** in **November 2015**.

**Food Group** recorded a decrease of **1.0%** towards the index position of **November 2015**. This was due to decrease in prices of some **fruits and vegetables, Meat, fish & poultry** items. Prices of some imported items (tinned & packaged food, frozen meat) also decreased throughout the months.

**Housing Group** recorded a decrease by **0.1%** in the index position of **November 2015**, due to decrease in prices of **paint** compares to the previous month.

**Household Operation** group recorded no change in the index position of **November 2015**.

**Tobacco, alcohol & kava Tonga group** index marked an increase by **0.6%** compares to the previous month. This was due to increase in price of **tobacco**.

**Clothing & footwear groups** index marked no change compares to the previous month.

**Transportation group** index recorded a decrease by **0.6%** in the index position of **November 2015**. This was due to decrease in price of **Petrol** compares to the previous month.

**Misc. Goods and Services group index** recorded no change compared to the previous month.

*Detailed information from this release is available from the Statistics Department Or visit our website at [www.spc.int/prism/tonga/](http://www.spc.int/prism/tonga/)*