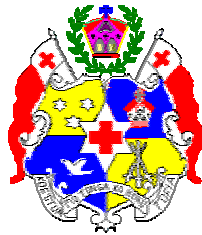


SERIES NO:
SDT:23-289



KINGDOM OF TONGA

STATISTICAL BULLETIN

ON

CONSUMER PRICE INDEX

DECEMBER 2010

Price: \$2.00

February 2011

STATISTICS DEPARTMENT
GOVERNMENT OF TONGA
NUKU'ALOFA
TONGA

Website: www.spc.int/prism/country/to/stats

STATISTICS DEPARTMENT

CONSUMER PRICE INDEX FOR DECEMBER 2010

(Base Period : October 2010=100.0)

Consumer Price Index for December 2010 increased by 0.3%
With an Annual Inflation Rate of 5.0%

The Consumer Price Index covers price changes in Tongatapu Division only. The weights were derived from Household Income and Expenditure Survey of 2009.

1. The **Consumer Price Index (CPI)** for December 2010 has recorded an increase of 0.3% over November 2010 (99.5) and now stands at 99.8. For the previous two months, October and November 2010 both decreased by 0.5%.
2. The **Annual Rate of Inflation** for December 2010 stood at 5.0%, the highest since 5.1% in July 2010. This is compared to 4.8% recorded for November 2010 and 1.2% for December 2009. Local Index recorded an Annual Inflation Rate of 0.4% while the Imported Index was 7.9%.
3. When comparing the Local and Imported indices during December 2010 to the index of November 2010, Local Index increased by 0.1% while the Imported Index increased by 0.4%.
4. Detailed changes in each group over the previous month are as follows:

A.	FOOD	0.5%
	Food Group made the second largest increase towards the index position of December 2010. Although the overall prices for locally produced fruits and vegetables were recorded to be lower, but these were offset by higher prices recorded for imported fruits and vegetables, also meat, fish and poultry sub-group and dairy farm products.	
B.	HOUSING	-0.4%
	Only the Housing group made a decrease towards the index position of December, due to decrease in prices of some housing maintenance goods, which includes a bag of cement and concrete blocks.	
C.	HOUSEHOLD OPERATIONS	0.0%
	Prices of items in this group remained unchanged, thus resulted to no change of this group index for the month of December 2010.	
D.	CLOTHING AND FOOTWEAR	0.0%
	Prices of items in this group remained unchanged, thus resulted to no change of this group index for the month of December 2010.	
E.	TRANSPORTATION	0.7%
	Transportation group made the largest increase towards the index of December 2010, due mainly to increase in prices of fuel (petrol and diesel).	
F.	TOBACCO, ALCOHOL & KAVA TONGA	0.0%
	Prices of items in this group remained unchanged, thus resulted to no change of this group index for the month of December 2010.	
G.	MISC. GOODS AND SERVICES	0.0%
	Prices of items in this group remained unchanged, thus resulted to no change of this group index for the month of December 2010.	

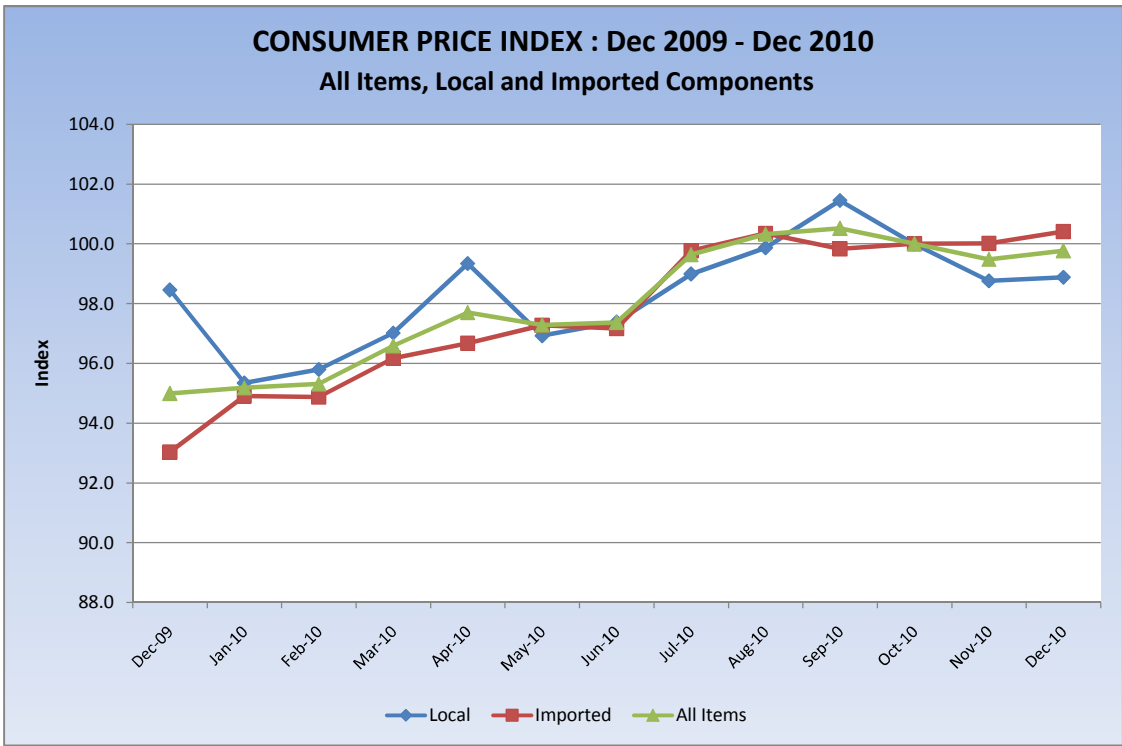


Fig 1: Graphical representation of Consumer Price Index for Total, Local and Imported Components

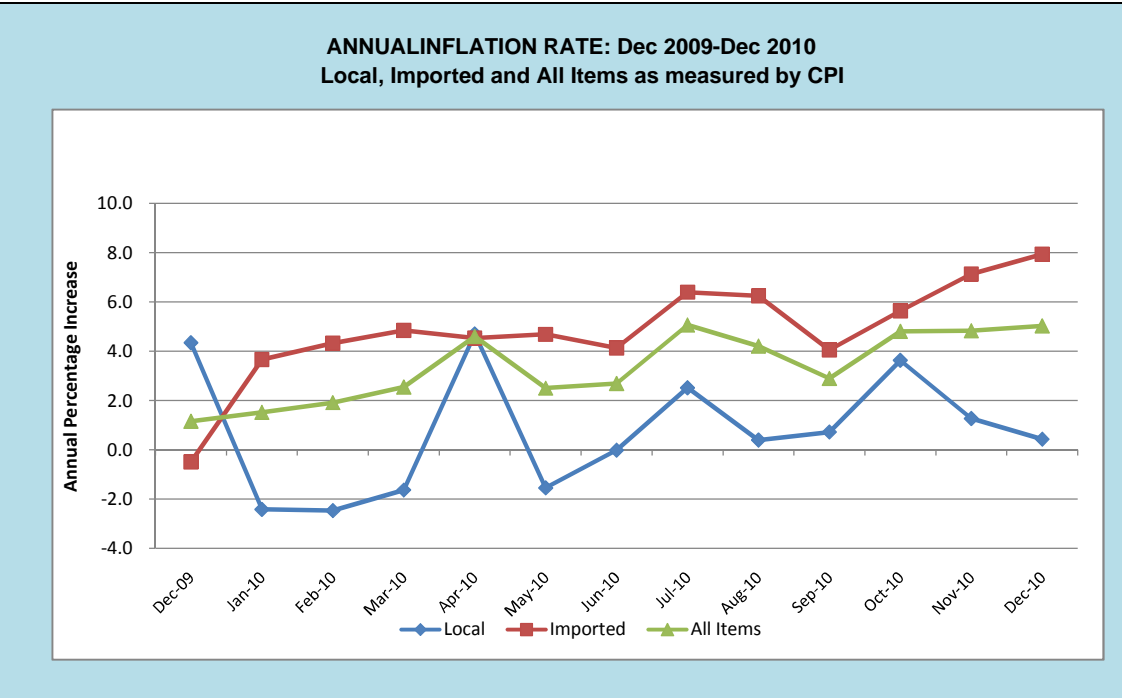


Fig 2: Graphical representation of Annual Inflation rate (%) for Local, Imported and All Items as measured by Consumer Price Index (CPI)

**Fig 3: Contribution to % change from previous month, All groups
November 2010 to December 2010**

Group	Local	Imported	Total
Food	0.05	0.16	0.21
Housing	0.00	-0.01	-0.01
H'hold Operation	0.00	0.00	0.00
Clothing, f/wear	0.00	0.00	0.00
Transport	0.00	0.08	0.08
Tob, Alc, Kava	0.00	0.00	0.00
Misc G & S	0.00	0.00	0.00
TOTAL	0.05	0.23	0.28

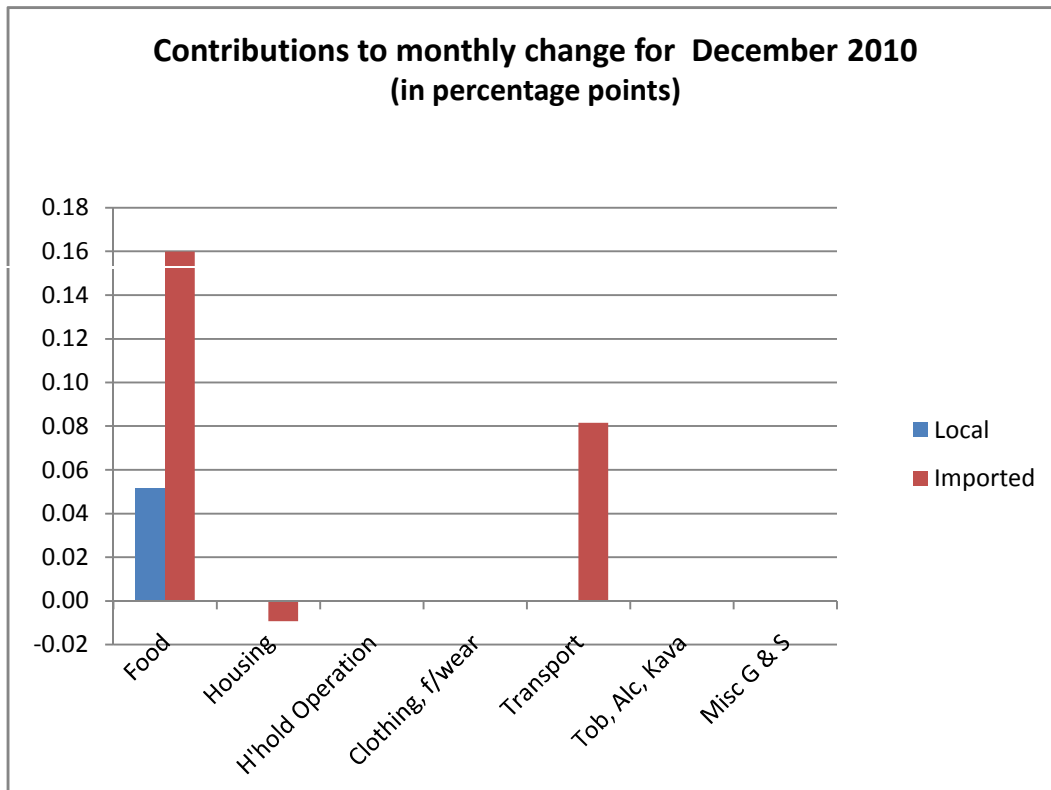


TABLE 1: CONSUMER PRICE INDEX BY MAJOR GROUPS

Base Period : OCTOBER 2010 (= 100.0)

Index Period : DECEMBER 2010

YEAR / MONTH	ALL ITEMS	FOOD	HOUSING	HOUSEHOLD OPERATIONS	CLOTHING & FOOTWEAR	TRANSPORTATION	TOBACCO, ALCOHOL & KAVA	MISC. GOODS & SERVICES
	100.00	45.76	2.52	20.80	3.16	11.93	6.00	9.83
2007								
July	85.7	82.0	96.4	94.1	90.2	95.8	72.7	93.6
August	86.4	83.4	96.7	96.7	90.2	93.6	73.1	93.9
September	87.2	85.2	96.7	96.3	90.2	93.6	73.8	93.4
October	87.4	86.1	96.9	96.3	89.9	91.7	74.8	93.7
November	87.6	84.9	96.8	96.5	89.7	94.9	75.8	93.7
December	88.3	85.7	97.1	96.6	90.5	96.1	76.0	94.5
2008								
January	90.3	87.0	97.1	100.2	91.7	101.4	75.5	98.7
February	91.8	88.6	96.5	104.9	91.7	102.2	76.6	98.1
March	92.0	89.0	97.0	104.7	91.7	101.2	76.3	102.5
April	92.2	89.3	98.3	105.0	87.3	101.5	76.2	102.2
May	93.2	89.2	97.5	101.8	99.5	108.4	76.5	102.0
June	93.7	90.2	97.6	102.1	99.5	109.0	76.5	102.1
July	93.7	87.6	98.7	102.2	98.0	113.9	78.4	102.4
August	95.8	89.6	99.2	102.5	100.8	118.3	81.0	101.9
September	96.2	88.8	101.4	108.8	100.8	116.1	82.5	102.5
October	95.8	88.0	101.9	108.9	98.6	116.1	82.9	101.5
November	94.5	86.2	104.4	106.8	97.5	114.2	82.8	101.4
December	93.9	88.0	104.4	106.6	97.5	106.1	82.1	101.3
2009								
January	93.8	91.6	103.8	106.0	100.0	94.1	83.1	101.5
February	93.5	92.6	103.8	105.9	100.2	89.5	83.6	101.5
March	94.2	93.3	103.8	104.6	100.2	92.3	83.9	101.4
April	93.4	92.9	103.9	95.1	101.1	93.0	84.6	104.5
May	94.9	96.3	103.9	95.0	101.1	93.4	84.6	104.5
June	94.8	95.9	103.9	95.0	101.1	94.3	84.1	104.5
July	94.8	95.2	104.0	95.2	101.3	96.5	83.7	105.0
August	96.3	98.0	104.0	95.2	101.3	99.3	82.3	105.4
September	97.7	101.5	104.0	95.2	101.3	98.8	82.3	105.4
October	95.4	96.6	103.9	98.3	100.6	96.4	81.3	105.2
November	94.9	95.7	103.9	98.3	100.6	96.7	80.5	105.2
December	95.0	95.3	102.8	98.4	100.6	98.0	81.0	105.2
2010								
January	95.2	94.8	103.0	98.2	99.7	97.8	86.5	99.1
February	95.3	94.5	103.0	98.3	99.7	99.2	87.0	99.1
March	96.6	97.1	103.0	98.4	100.2	99.3	87.5	99.1
April	97.7	99.3	103.7	98.4	99.4	100.8	87.2	99.1
May	97.3	97.6	103.7	98.7	99.4	102.7	87.2	99.1
June	97.4	98.0	103.6	100.0	99.3	100.8	87.5	99.2
July	99.6	99.1	102.9	100.0	100.0	99.6	100.1	99.2
August	100.3	100.4	103.2	100.1	100.0	100.3	100.1	99.2
September	100.5	100.7	99.6	100.1	100.0	101.0	100.1	100.4
October	100.0	100.0	100.0	100.0	100.0	100.0	100.0	100.0
November	99.5	98.5	100.0	100.0	100.0	101.7	100.4	99.4
December	99.8	99.0	99.6	100.0	100.0	102.3	100.4	99.4
Percentage change between Nov 2010 and Dec 2010	0.3	0.5	-0.4	0.0	0.0	0.7	0.0	0.0
Percentage change between Dec 2009 and Dec 2010	5.0	3.8	-3.1	1.6	-0.6	4.4	24.0	-5.5

**TABLE 2: CONSUMER PRICE INDEX SERIES WITH % CHANGES FOR THE PERIOD
AND INFLATION RATE FOR THE PERIOD AND YEAR
(Base Period: OCTOBER 2010 = 100.0)
Index Period: DECEMBER 2010**

YEAR / MONTH	LOCAL INDEX	IMPORT INDEX	ALL ITEMS INDEX	MONTHLY % CHANGE IN ALL ITEMS INDEX	ANNUAL INFLATION RATE (%) FOR THE PERIOD	AVERAGE INDEX FOR YEAR	AVERAGE ANNUAL INFLATION RATE (%)
2007							
January	84.5	80.1	81.7	-1.2	3.3		
February	84.1	80.4	81.8	0.1	3.4		
March	84.4	80.9	82.2	0.5	3.9		
April	85.0	80.8	82.3	0.2	4.9		
May	84.3	81.8	82.7	0.5	5.2		
June	86.2	81.9	83.5	0.9	5.7	81.8	5.1
July	87.7	84.5	85.7	2.7	6.6		
August	89.5	84.6	86.4	0.8	6.9		
September	89.1	86.0	87.2	0.9	8.1		
October	88.2	86.9	87.4	0.3	7.7		
November	86.3	88.1	87.6	0.2	7.4		
December	87.9	88.3	88.3	0.8	6.8	84.7	5.8
2008							
January	90.8	89.8	90.3	2.3	10.5		
February	93.8	90.5	91.8	1.6	12.2		
March	94.5	90.5	92.0	0.3	12.0		
April	94.6	90.7	92.2	0.2	11.9		
May	94.6	92.2	93.2	1.1	12.6		
June	95.6	92.5	93.7	0.6	12.2	89.6	9.6
July	92.9	93.9	93.7	0.0	9.3		
August	96.1	95.4	95.8	2.2	10.9		
September	96.8	95.6	96.2	0.4	10.3		
October	95.0	96.0	95.8	-0.4	9.5		
November	92.3	95.6	94.5	-1.3	7.9		
December	94.4	93.5	93.9	-0.6	6.4	93.6	10.5
2009							
January	97.7	91.5	93.8	-0.2	3.8		
February	98.2	90.9	93.5	-0.2	1.9		
March	98.6	91.7	94.2	0.7	2.4		
April	94.9	92.5	93.4	-0.8	1.4		
May	98.4	92.9	94.9	1.6	1.9		
June	97.4	93.3	94.8	-0.1	1.2	94.5	5.6
July	96.6	93.8	94.8	0.0	1.2		
August	99.5	94.5	96.3	1.5	0.5		
September	100.7	95.9	97.7	1.5	1.6		
October	96.5	94.7	95.4	-2.3	-0.4		
November	97.5	93.4	94.9	-0.5	0.4		
December	98.5	93.0	95.0	0.1	1.2	94.9	1.4
2010							
January	95.3	94.9	95.2	0.2	1.5		
February	95.8	94.9	95.3	0.1	1.9		
March	97.0	96.2	96.6	1.3	2.5		
April	99.3	96.7	97.7	1.2	4.6		
May	96.9	97.3	97.3	-0.4	2.5		
June	97.4	97.2	97.4	0.1	2.7	96.1	1.7
July	99.0	99.8	99.6	2.3	5.1		
August	99.9	100.3	100.3	0.7	4.2		
September	101.5	99.8	100.5	0.2	2.9		
October	100.0	100.0	100.0	-0.5	4.8		
November	98.8	100.0	99.5	-0.5	4.8		
December	98.9	100.4	99.8	0.3	5.0	98.3	3.6

TABLE 3: CONSUMER PRICE INDEX WITH LOCAL AND IMPORTED COMPONENTS
PERCENTAGE CHANGE FROM PREVIOUS MONTH
 (Base Period: OCTOBER 2010 = 100.0)
 Index Period : DECEMBER 2010

	WEIGHTS			DECEMBER 2010			NOVEMBER 2010			% CHANGE		
	Local	Imported	Total	Local	Imported	Total	Local	Imported	Total	Local	Imported	Total
A. FOOD	17.8	27.9	45.8	97.4	100.0	99.0	97.1	99.5	98.5	0.3	0.6	0.5
Fruit and Vegetables	6.5	0.9	7.5	89.2	112.2	92.0	93.4	99.2	94.1	-4.5	13.1	-2.2
Meats, Fish & Poultry	3.7	14.6	18.4	106.6	99.2	100.8	98.3	99.3	99.1	8.5	0.0	1.7
Dairy Farm & Vegetable Products	0.5	3.2	3.6	97.5	101.1	100.6	94.2	100.7	99.8	3.5	0.4	0.8
Cereals and Cereal Products	3.4	3.5	6.9	100.0	100.8	100.4	100.0	99.7	99.8	0.0	1.1	0.5
Other Food	0.0	5.7	5.7	-	99.0	99.0	-	99.1	99.1	-	-0.1	-0.1
Drinks, Sweets & Meals away from home	3.7	0.0	3.7	100.0	-	100.0	100.0	0.0	100.0	0.0	-	0.0
B. HOUSING	1.7	0.8	2.5	100.0	98.9	99.6	100.0	100.0	100.0	0.0	-1.1	-0.4
House Maintenance Goods	0.1	0.8	0.9	100.0	98.9	99.0	100.0	100.0	100.0	0.0	-1.1	-1.0
House Maintenance Services	1.6	0.0	1.6	100.0	-	100.0	100.0	-	100.0	0.0	-	0.0
C. HOUSEHOLD OPERATIONS	17.3	3.5	20.8	100.0	99.8	100.0	100.0	99.8	100.0	0.0	0.0	0.0
Domestic Fuel and Power	6.0	1.1	7.1	100.0	100.0	100.0	100.0	100.0	100.0	0.0	0.0	0.0
H/hold Appl., Equipment & Utensils	0.0	1.2	1.2	-	100.1	100.1	-	100.1	100.1	-	0.0	0.0
Household Furni., Furn. & Textiles	1.4	0.0	1.4	100.0	-	100.0	100.0	-	100.0	0.0	-	0.0
H/hold Supplies & Services	4.7	1.2	5.9	100.0	99.5	99.9	100.0	99.5	99.9	0.0	0.0	0.0
Communications Services	5.2	0.0	5.2	100.0	-	100.0	100.0	-	100.0	0.0	-	0.0
D. CLOTHING AND FOOTWEAR	0.0	3.2	3.2	100.0	100.0	100.0	0.0	100.0	100.0	-	0.0	0.0
Clothing Supplies & Services	0.0	2.1	2.1	100.0	100.0	100.0	-	100.0	100.0	-	0.0	0.0
Footwear	0.0	1.0	1.0	-	100.0	100.0	-	100.0	100.0	-	0.0	0.0
E. TRANSPORTATION	0.5	11.5	11.9	100.0	102.4	102.3	100.0	101.7	101.7	0.0	0.7	0.7
Public Transportation	0.5	2.9	3.4	100.0	100.0	100.0	100.0	100.0	100.0	0.0	0.0	0.0
Private Transportation	0.0	8.6	8.6	-	103.3	103.3	-	102.3	102.3	-	0.9	0.9
F. TOBACCO, ALCOHOL & KAVA	1.5	4.5	6.0	100.0	100.6	100.4	100.0	100.6	100.4	0.0	0.0	0.0
Tobacco	0.0	2.9	2.9	-	100.9	100.9	-	100.9	100.9	-	0.0	0.0
Alcohol	0.8	1.6	2.4	100.0	100.0	100.0	100.0	100.0	100.0	0.0	0.0	0.0
Kava	0.7	0.0	0.7	100.0	-	100.0	100.0	-	100.0	0.0	-	0.0
G. MISC. GOODS & SERVICES	3.5	6.4	9.8	100.0	99.1	99.4	100.0	99.1	99.4	0.0	0.0	0.0
Medical Health Services & Supplies	0.2	0.3	0.6	100.0	100.0	100.0	100.0	100.0	100.0	0.0	0.0	0.0
Cosmetics and Toiletries	0.0	5.3	5.3	-	98.9	98.9	-	98.9	98.9	-	0.0	0.0
Personal Goods	0.0	0.2	0.2	-	100.0	100.0	-	100.0	100.0	-	0.0	0.0
Newspapers & Stationery Supplies	0.1	0.6	0.6	100.0	100.0	100.0	100.0	100.0	100.0	0.0	0.0	0.0
Leisure & Recreational & Craft Supplies	0.4	0.0	0.4	100.0	-	100.0	100.0	-	100.0	0.0	-	0.0
Other Goods and Services	0.8	0.0	0.8	100.0	-	100.0	100.0	-	100.0	0.0	-	0.0
Education	2.0	0.0	2.0	100.0	-	100.0	100.0	-	100.0	0.0	-	0.0
TOTAL	42.2	57.8	100.0	98.9	100.4	99.8	98.8	100.0	99.5	0.1	0.4	0.3

TABLE 4: CONSUMER PRICE INDEX WITH LOCAL AND IMPORTED COMPONENTS
PERCENTAGE CHANGE FROM SAME MONTH OF PREVIOUS YEAR
(Base Period: OCTOBER 2010 = 100.0)
Index Period : DECEMBER 2010

	WEIGHTS			DECEMBER 2010			DECEMBER 2009			% CHANGE		
	Local	Imported	Total	Local	Imported	Total	Local	Imported	Total	Local	Imported	Total
A. FOOD	17.8	27.9	45.8	97.4	100.0	99.0	103.4	94.7	95.3	-5.9	5.6	3.8
Fruit and Vegetables	6.5	0.9	7.5	89.2	112.2	92.0	100.4	101.0	85.3	-11.2	11.1	7.9
Meat, Fish & Poultry	3.7	14.6	18.4	106.6	99.2	100.8	111.7	92.7	95.4	-4.5	7.1	5.6
Dairy Farm & Vegetables Products	0.5	3.2	3.6	97.5	101.1	100.6	101.7	102.5	103.0	-4.1	-1.4	-2.3
Cereals and Cereal Products	3.4	3.5	6.9	100.0	100.8	100.4	104.3	106.7	109.5	-4.2	-5.6	-8.3
Other Food	0.0	5.7	5.7	-	99.0	99.0	0.0	88.9	88.9	-	11.3	11.3
Drinks, Sweets & Meals away from home	3.7	0.0	3.7	100.0	-	100.0	100.0	0.0	95.4	0.0	-	4.8
B. HOUSING	1.7	0.8	2.5	100.0	98.9	99.6	100.0	106.6	102.8	0.0	-7.2	-3.1
House Maintenance Goods	0.1	0.8	0.9	100.0	98.9	99.0	100.0	106.6	104.4	0.0	-7.2	-5.2
House Maintenance Services	1.6	0.0	1.6	100.0	-	100.0	100.0	0.0	100.0	0.0	-	0.0
C. HOUSEHOLD OPERATIONS	17.3	3.5	20.8	100.0	99.8	100.0	100.0	100.1	98.4	0.0	-0.3	1.6
Domestic Fuel and Power	6.0	1.1	7.1	100.0	100.0	100.0	100.0	93.2	98.9	0.0	7.3	1.1
H/hold Appl., Equipment & Utensils	0.0	1.2	1.2	-	100.1	100.1	0.0	101.1	101.1	-	-1.0	-1.0
H/hold Furniture, Furniture & Textiles	1.4	0.0	1.4	100.0	-	100.0	100.0	0.0	97.5	0.0	-	2.6
H/hold Supplies & Services	4.7	1.2	5.9	100.0	99.5	99.9	100.0	100.3	96.9	0.0	-0.9	3.1
Communications Services	5.2	0.0	5.2	100.0	-	100.0	100.0	0.0	100.0	0.0	-	0.0
D. CLOTHING AND FOOTWEAR	0.0	3.2	3.2	-	100.0	100.0	0.0	100.8	100.6	-	-0.8	-0.6
Clothing Supplies & Services	0.0	2.1	2.1	-	100.0	100.0	0.0	100.5	100.4	-	-0.5	-0.4
Footwear	0.0	1.0	1.0	-	100.0	100.0	0.0	101.3	101.3	-	-1.3	-1.3
E. TRANSPORTATION	0.5	11.5	11.9	100.0	102.4	102.3	100.0	97.4	98.0	0.0	5.2	4.4
Public Transport	0.5	2.9	3.4	100.0	100.0	100.0	100.0	89.5	95.9	0.0	11.8	4.3
Private Transport	0.0	8.6	8.6	-	103.3	103.3	0.0	98.9	98.8	-	4.4	4.5
F. TOBACCO, ALCOHOL & KAVA	1.5	4.5	6.0	100.0	100.6	100.4	100.0	79.8	81.0	0.0	26.1	24.0
Tobacco	0.0	2.9	2.9	-	100.9	100.9	0.0	76.1	76.1	-	32.6	32.6
Alcohol	0.8	1.6	2.4	100.0	100.0	100.0	100.0	88.1	89.1	0.0	13.5	12.2
Kava	0.7	0.0	0.7	100.0	-	100.0	100.0	0.0	100.0	0.0	-	0.0
G. MISC. GOODS & SERVICES	3.5	6.4	9.8	100.0	99.1	99.4	100.0	100.2	105.2	0.0	-1.1	-5.5
Medical Health Services & Supplies	0.2	0.3	0.6	100.0	100.0	100.0	100.0	103.5	90.1	0.0	-3.4	11.0
Cosmetics and Toiletries	0.0	5.3	5.3	-	98.9	98.9	0.0	99.4	99.4	-	-0.5	-0.5
Personal Goods	0.0	0.2	0.2	-	100.0	100.0	0.0	106.6	105.6	-	-6.2	-5.3
Newspapers & Stationery Supplies	0.1	0.6	0.6	100.0	100.0	100.0	100.0	99.3	78.7	0.0	0.7	27.0
Leisure & Recreational & Craft Supplies	0.4	0.0	0.4	100.0	-	100.0	100.0	0.0	100.5	0.0	-	-0.5
Other Goods and Services	0.8	0.0	0.8	100.0	-	100.0	100.0	0.0	100.0	0.0	-	0.0
Education	2.0	0.0	2.0	100.0	-	100.0	100.0	0.0	129.0	0.0	-	-22.5
TOTAL	42.2	57.8	100.0	98.9	100.4	99.8	98.5	93.0	95.0	0.4	7.9	5.0

TABLE 5 : CONSUMER PRICE INDEX
GROUPS AND SUBGROUPS - INDEX NUMBERS
(Base Period: OCTOBER 2010 = 100.0)
Index Period : DECEMBER 2010

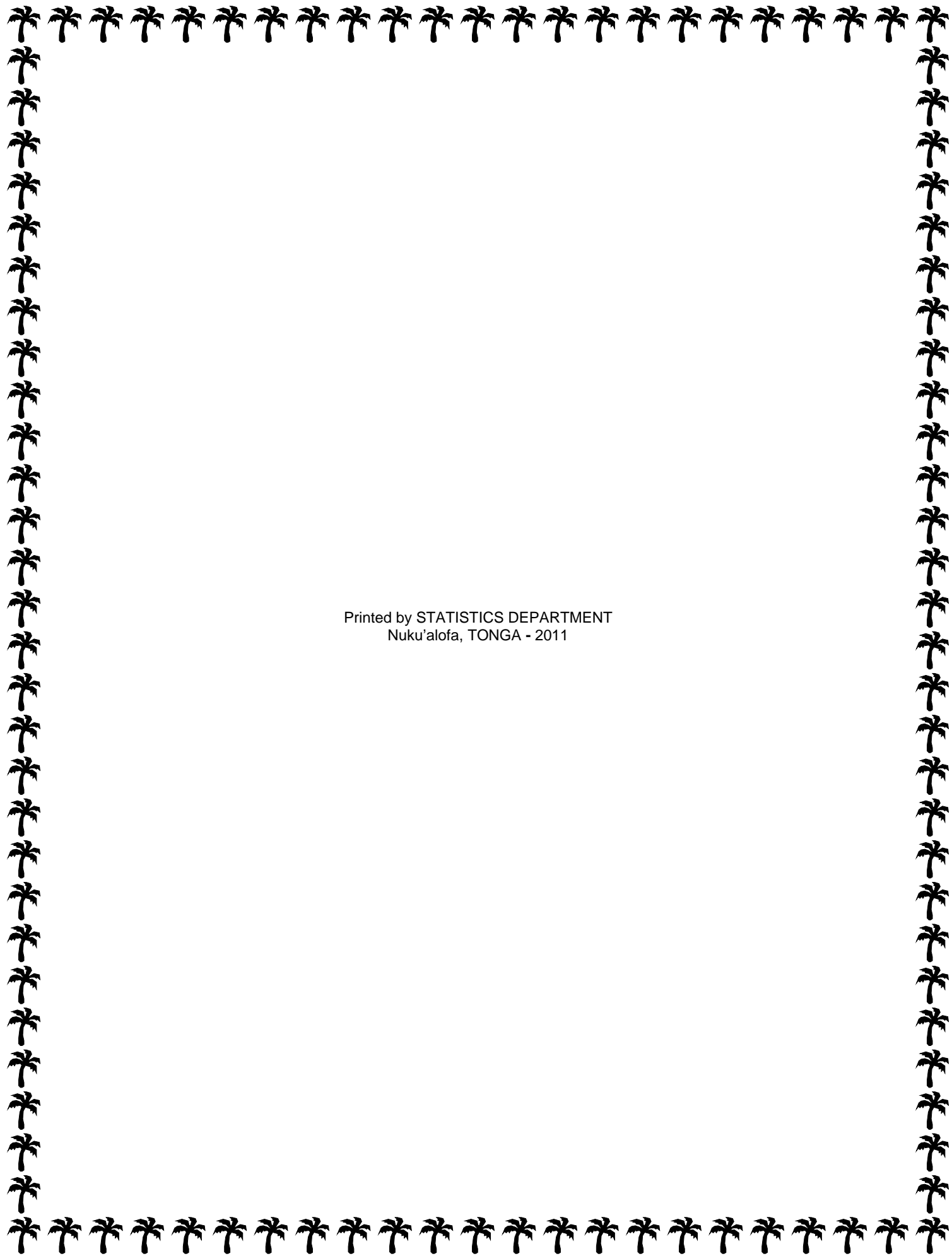
Group or Subgroup	Annual	Month											
	2009	Jan-10	Feb-10	Mar-10	Apr-10	May-10	Jun-10	Jul-10	Aug-10	Sep-10	Oct-10	Nov-10	Dec-10
A.FOOD GROUP	95.4	94.8	94.5	97.1	99.3	97.6	98.0	99.1	100.4	100.7	100.0	98.5	99.0
Fruit and Vegetables	83.0	84.0	87.5	93.9	100.0	87.6	85.9	91.0	94.5	100.1	100.0	94.1	92.0
Meats, Fish & Poultry	95.7	94.6	92.0	94.5	96.8	97.5	99.3	100.1	101.8	100.9	100.0	99.1	100.8
Dairy Farm & Vegetable Products	101.9	100.7	100.2	100.2	99.3	98.6	99.4	99.3	99.8	99.1	100.0	99.8	100.6
Cereals and Cereal Products	111.0	108.6	108.0	104.5	104.2	103.7	103.5	102.9	103.1	103.1	100.0	99.8	100.4
Other Food	90.6	91.5	93.3	100.5	101.2	102.4	102.0	101.3	100.9	99.6	100.0	99.1	99.0
Drinks, Sweets & Meals away from home	95.1	96.3	96.3	96.3	100.0	100.0	100.0	100.0	100.0	100.0	100.0	100.0	100.0
B.HOUSING GROUP	103.8	103.0	103.0	103.0	103.7	103.7	103.6	102.9	103.2	99.6	100.0	100.0	99.6
House Maintenance Goods	106.1	104.7	104.7	104.7	105.8	106.0	105.7	104.6	105.0	99.0	100.0	100.0	99.0
House Maintenance Services	100.0	100.0	100.0	100.0	100.0	100.0	100.0	100.0	100.0	100.0	100.0	100.0	100.0
C.HOUSEHOLD OPERATION GROUP	98.5	98.2	98.3	98.4	98.4	98.7	100.0	100.0	100.1	100.1	100.0	100.0	100.0
Domestic Fuel and Power	99.0	99.2	99.4	99.7	99.7	100.6	102.7	102.5	102.5	100.4	100.0	100.0	100.0
H/hold Appl., Equipment & Utensils	101.8	99.2	99.2	99.2	99.3	99.3	99.6	99.7	100.3	100.3	100.0	100.1	100.1
Household Furni., Furn. & Textiles	97.6	97.5	97.5	97.5	97.1	97.1	100.0	100.0	100.0	100.0	100.0	100.0	100.0
H/hold Supplies & Services	96.9	97.1	97.1	97.1	97.3	97.3	97.3	97.6	97.6	100.0	100.0	99.9	99.9
Communications Services	100.0	100.0	100.0	100.0	100.0	100.0	100.0	100.0	100.0	100.0	100.0	100.0	100.0
D.CLOTHING AND FOOTWEAR GROUP	100.8	99.7	99.7	100.2	99.4	99.4	99.3	100.0	100.0	100.0	100.0	100.0	100.0
Clothing Supplies & Services	99.8	99.6	99.6	100.2	99.2	99.2	99.0	100.0	100.0	100.0	100.0	100.0	100.0
Footwear	103.8	100.1	100.1	100.1	100.1	100.1	100.1	100.0	100.0	100.0	100.0	100.0	100.0
E.TRANSPORTATION GROUP	95.2	97.8	99.2	99.3	100.8	102.7	100.8	99.6	100.3	101.0	100.0	101.7	102.3
Public Transportation	96.5	95.6	95.6	95.7	95.7	95.7	95.7	95.7	100.0	100.0	100.0	100.0	100.0
Private Transportation	94.6	98.7	100.8	100.8	102.9	105.7	102.9	101.2	100.3	101.4	100.0	102.3	103.3
F.TOBACCO, ALCOHOL & KAVA GROUP	82.9	86.5	87.0	87.5	87.2	87.2	87.5	100.1	100.1	100.1	100.0	100.4	100.4
Tobacco	79.1	79.6	80.0	80.8	80.4	80.5	80.9	100.3	100.3	100.3	100.0	100.9	100.9
Alcohol	89.1	99.8	100.2	100.2	100.0	100.0	100.0	100.0	100.0	100.0	100.0	100.0	100.0
Kava	100.0	100.0	100.0	100.0	100.0	100.0	100.0	100.0	100.0	100.0	100.0	100.0	100.0
G. MISC. GOODS & SERVICES	104.4	99.1	99.1	99.1	99.1	99.1	99.2	99.2	99.2	100.4	100.0	99.4	99.4
Medical Health Services & Supplies	90.1	90.0	90.0	90.0	100.0	100.0	100.0	100.0	100.0	100.0	100.0	100.0	100.0
Cosmetics and Toiletries	99.7	100.7	100.7	100.7	100.7	100.7	100.9	100.6	100.6	100.7	100.0	98.9	98.9
Personal Goods	106.5	100.7	100.7	100.7	100.0	100.0	100.0	100.0	100.0	100.0	100.0	100.0	100.0
Newspapers & Stationery Supplies	78.7	79.4	79.4	79.4	73.4	73.4	73.4	73.4	73.4	100.0	100.0	100.0	100.0
Leisure & Recreational & Craft Supplies	99.2	99.3	99.3	99.3	99.3	99.3	100.0	100.0	100.0	100.0	100.0	100.0	100.0
Other Goods and Services	100.0	100.0	100.0	100.0	100.0	100.0	100.0	100.0	100.0	100.0	100.0	100.0	100.0
Education	125.6	100.0	100.0	100.0	100.0	100.0	100.0	100.0	100.0	100.0	100.0	100.0	100.0
ALL GROUPS	94.9	95.2	95.3	96.6	97.7	97.3	97.4	99.6	100.3	100.5	100.0	99.5	99.8

**Table 6 : MONTHLY AVERAGE PRICE OF
SELECTED LOCAL ITEMS**

	Unit	Monthly...										
		2009	Mar-10	Apr-10	May-10	Jun-10	Jul-10	Aug-10	Sep-10	Oct-10	Nov-10	Dec-10
ROOT CROPS												
1 Tala - Futuna	1 kg	0.85	1.44	1.15	1.13	1.20	1.08	1.31	1.26	1.32	1.36	1.37
2 Talo - Tonga	1kg	1.09	1.37	1.28	1.29	1.25	1.14	1.24	1.49	1.41	1.87	1.77
3 Manioke	1 kg	0.71	0.88	0.79	0.67	0.57	0.58	0.54	0.57	0.57	0.52	0.55
4 Kumala	1 kg	0.98	1.24	1.12	0.87	1.14	1.14	1.10	1.17	1.36	1.33	1.17
5 Yams; early	1 kg	3.19	2.94	2.71	2.83	3.65	4.55	4.91	5.41	5.36	5.06	4.37
6 Yams, late	1 kg	1.89	1.98	2.07	1.57	2.21	2.51	2.32	3.33	3.11	3.11	3.11
VEGETABLES												
1 Lu	1 kg	3.47	4.83	5.27	2.84	3.58	4.65	5.24	5.42	4.78	4.06	3.45
2 Pele	1 kg	2.06	1.64	1.62	1.66	1.59	2.26	2.86	2.95	2.52	1.75	1.64
3 Tomatoes	1 kg	5.44	6.97	12.51	7.49	3.57	4.20	2.78	1.76	1.28	1.54	1.15
4 H/Cabbage	1 kg	2.83	4.18	3.81	2.65	1.93	1.71	1.59	1.75	1.94	1.27	1.29
7 Carrots	1 kg	4.86	3.32	4.82	4.68	4.68	4.13	3.85	3.81	5.13	5.09	5.26
8 Capsicum	1 kg	11.07	8.20	8.61	12.92	16.29	11.11	10.99	8.90	6.04	3.78	5.24
FRUITS AND NUTS												
1 Bananas ripe	1 kg	3.13	2.37	2.68	4.15	5.99	5.58	5.03	5.45	3.65	3.06	4.14
2 Watermelon	1 kg	1.12	0.89	0.94	1.22	0.93	1.24	1.46	1.83	1.93	1.06	0.83
3 Pineapple	1 kg	5.55	3.47	3.47	3.47	6.90	6.40	5.79	7.24	5.93	3.17	2.15
4 Pawpaw	1 kg	2.73	3.56	4.66	4.77	3.79	3.57	3.60	3.28	2.74	1.58	1.49
5 Coconut (dry)	1 kg	0.33	0.34	0.36	0.33	0.33	0.32	0.34	0.34	0.38	0.37	0.45
6 Coconut (green)	1 kg	0.57	0.58	0.58	0.61	0.65	0.63	0.57	0.56	0.60	0.65	0.62
7 Peanuts	1 kg	23.09	22.54	20.38	17.74	23.19	24.69	30.00	29.06	21.47	27.00	16.44
MARINE AND ANIMAL PRODUCTS												
1 Sausages	1 kg	8.87	8.90	8.90	8.90	8.95	8.95	8.95	8.95	6.50	6.37	6.50
2 Eggs	1 egg	0.54	0.50	0.50	0.50	0.50	0.50	0.50	0.50	0.50	0.47	0.49
3 Tuna	1 kg	9.15	8.00	10.00	10.00	10.00	14.00	13.00	12.00	10.47	9.92	11.00
4 Octopus	1 kg	14.56	13.01	13.21	10.28	12.08	8.44	9.45	9.75	10.88	10.29	19.49
5 Cockles (to'o)	1 kg	4.47	2.11	2.03	2.99	3.79	3.41	3.91	3.82	2.79	3.06	3.29
7 Stringed fish (Mixed)	1 kg	8.94	7.15	7.91	8.22	7.72	8.83	9.00	8.87	7.90	7.12	8.44

**Table 7 : MONTHLY AVERAGE PRICE OF
SELECTED IMPORTED ITEMS**

	Unit	Annual ... <i>Monthly averages</i>														Annual % change	
		2009	Dec-09	Jan-10	Feb-10	Mar-10	Apr-10	May-10	Jun-10	Jul-10	Aug-10	Sep-10	Oct-10	Nov-10	Dec-10		
FOOD																	
Fruits and Vegetables																	
1	Potatoes	1 kg	2.54	2.19	2.15	2.33	2.64	2.78	2.63	2.39	2.45	2.56	2.56	2.70	2.76	3.00	37%
2	Onions	1 kg	2.58	2.31	2.56	2.91	2.65	3.04	2.89	2.64	2.64	2.83	2.63	2.94	2.94	3.50	52%
3	Apples	1 kg	12.06	13.38	12.40	12.40	10.65	10.15	10.15	10.13	11.33	11.33	10.28	7.02	7.02	7.03	-47%
4	Oranges	1 kg	13.59	12.36	11.50	12.00	12.00	12.27	12.27	12.05	12.05	12.40	12.40	12.75	12.75	13.25	7%
Meats, Fish & Poultry																	
5	Mutton Flaps	1 kg	8.24	8.22	8.49	8.29	8.72	8.91	8.88	9.10	9.08	9.21	9.09	9.33	9.34	9.34	14%
6	Chicken Pieces	1 kg	4.01	3.56	3.78	3.54	3.33	3.33	3.32	3.42	3.28	3.40	3.34	3.49	3.39	3.49	-2%
Other Food																	
1	Flour	1 kg	2.13	2.09	2.07	2.02	1.96	1.92	1.88	1.86	1.90	1.90	1.88	1.61	1.65	1.65	-21%
2	Sugar	1 kg	1.90	1.75	1.85	1.93	2.51	2.59	2.68	2.66	2.61	2.55	2.48	2.51	2.51	2.51	43%
TOBACCO, ALCOHOL AND KAVA																	
Tobacco																	
3	Winfield Blue	Packet	9.80	9.17	9.71	9.75	9.85	9.85	9.85	9.91	11.44	11.44	11.44	11.42	11.58	11.58	26%
4	Port Royal Tobacco	Packet	13.37	13.55	13.78	13.83	13.84	13.67	13.71	13.75	18.88	18.88	18.88	20.48	21.88	21.88	61%
TRANSPORTATION																	
Private Transportation																	
1	Petrol	litre	2.30	2.37	2.37	2.45	2.46	2.53	2.61	2.51	2.45	2.42	2.45	2.42	2.48	2.50	6%
2	Diesel	litre	2.29	2.41	2.38	2.41	2.40	2.48	2.63	2.56	2.49	2.46	2.52	2.49	2.53	2.56	6%



Printed by STATISTICS DEPARTMENT
Nuku'alofa, TONGA - 2011