



Government of Tonga

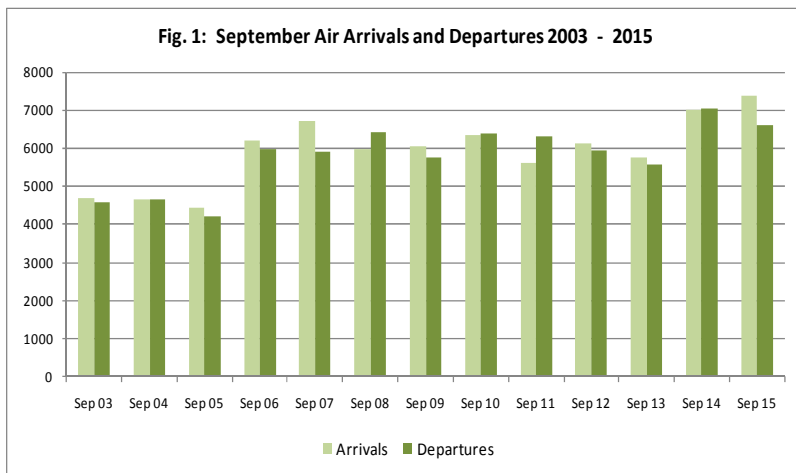
INTERNATIONAL ARRIVALS AND DEPARTURES September 2015

SD18M-39

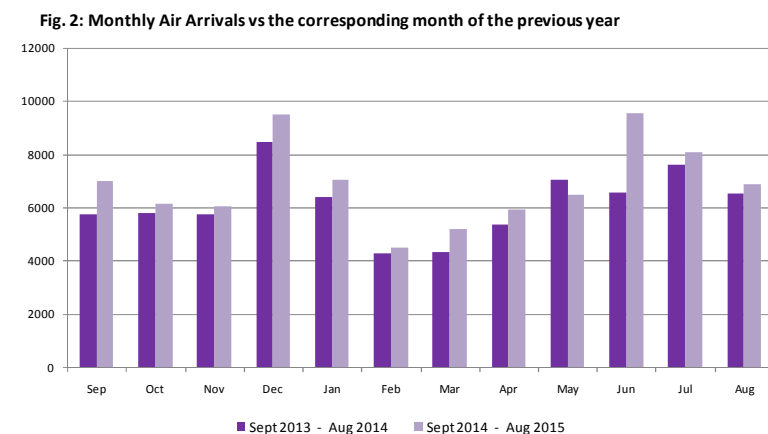
Statistical Bulletin

Month of September 2015	Number	Change from previous month	Change from previous year
All Arrivals	9,604	34.8	27.3
Air Visitors	4,915	2.2	2.8
Air Returning Residents	2,454	17.7	9.2
Cruise Ships	1,953	...	534.1
Yachts	282	22.1	34.9
All Departures	8,822	12.9	15.9

- An increase of 34.8% of all arrivals (9,604) compared to the previous month of August 2015 (7,125)
- An increase of 2.2% of all air visitors (4,915) compared to August 2015 (4,809)
- Again an increase of 17.7% of Returning Residents (2,454) compared to August 2015 (2,085).
- There were 1,953 passengers who arrived by cruise ship in the month of September, 2015
- An increase of 22.1% of yacht arrivals compared to the previous month
- An increase of 12.9% of all departures from August 2015

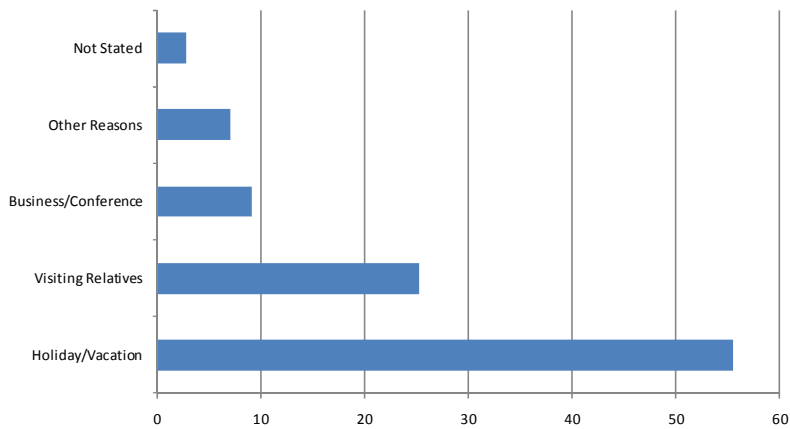


- Total air arrivals in September 2015 were 7,369 an increase of 4.9% compared to September 2014 (7,027).
- Total air departures of 6,604 in September 2015, a decline of 6.1% compared to September 2014 (7,035)



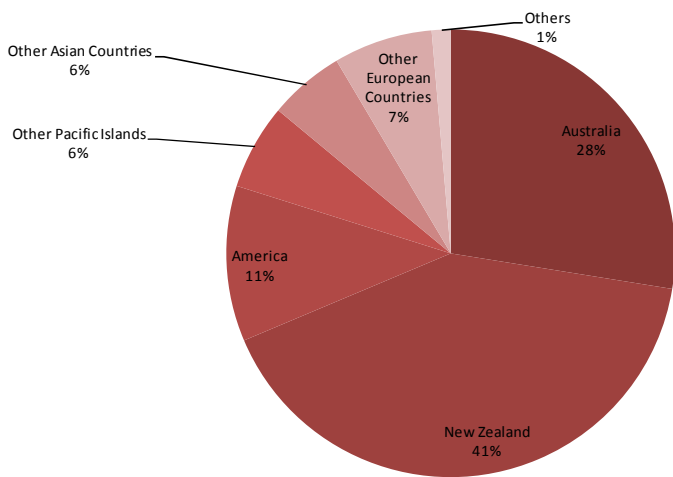
- Total air visitor arrivals in September 2015 were 4,915 an increase of 2.8% compared to September 2014 (4,779)

Fig. 3: Air Visitors by Purpose of Visit September, 2015



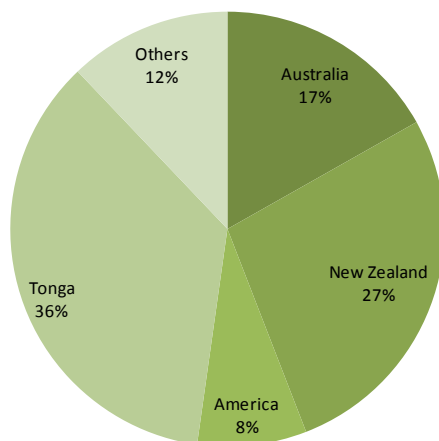
- Holiday/Vacation made up 55.5% (2,729) of all air visitors to the Kingdom in the month of September.
- 25.3% (1,245) of the total visitors were here to visit Relatives/friends
- Visitors who were here on Business or Conference made up 9.1% (446) and those with other reasons were 7.1% (351)

Fig. 4: Air Visitors by Country of Usual Residence September, 2015



- New Zealand remains as the leading country in visitors arrivals by country of usual residence, accounting for 41.1% (2,021) of total air visitors
- This was followed by Australia with 27.5 % (1,353), and USA 11.2% (553)

Fig. 5: Air Departures by Country of Usual Residence September, 2015



- Most of the persons departing in the month of September were persons residing in Tonga (2,357) followed by New Zealand (1,801) and Australia (1,112)

Background Information

Data is extracted from the arrival and departure cards of the Immigration Department, Ministry of Foreign Affairs and Customs vessel & yacht log book. The Statistics Department reconciles the figures from the Air Terminal Services Manifest, Tonga Airport Limited and Ports Authority Manifest to produce final published data.

Statistics on Overseas Arrivals and Departures related to the number of movements of travelers rather than the number of travelers (i.e. the multiple movements of individual persons during a given reference period are all counted).

Definitions

- ▶ **A Visitor** is a person other than a Tongan citizen, permit holder and exempted person, who usually stay at least 24 hours in the Kingdom, or who stays overnight in accommodation within Tonga. This refers to passengers arriving by air and yacht only.
- ▶ **Cruise Ship Passengers** are defined as those who arrive and depart in the same vessel which is on a cruise trip, and use that vessel's accommodation during their stay in Tonga. They are also known as "Excursionist"
- ▶ **A Returning resident** is a person who has the Kingdom of Tonga as their permanent address for more than six months of the year and returns to Tonga after a trip overseas. Tongan residence is self-defined as reported by travelers when completing the Passenger Arrival Card.
- ▶ **Mode of Transport** Only air, yacht and cruise ships passengers are included. Passenger/crew on cargo, navy or special vessels are excluded.

The Statistics Department wishes to acknowledge the cooperation of the Immigration Department of the Ministry of Foreign Affairs and Trade and the Custom Department of the Ministry of Revenue Services, Air Terminal Services, Ports Authority making it possible to publish these important statistics.

Table 1. Monthly Arrival and Departure by Mode of Travel and Net Migration, 2010 - 2015

Period	Visitors Arrivals				Returning Residents				Total Arrivals				Total Departures				Net Migration
	Air	Ship	Yacht	Total	Air	Ship	Yacht	Total	Air	Ship	Yacht	Total	Air	Ship	Yacht	Total	
2005	42,437	11,840	943	55,220	21,066			21,066	63,503	11,840	943	76,286	60,276	11,871	1,393	73,540	2,746
2006	46,268	10,809	868	57,945	20,707			20,707	66,975	10,809	868	78,652	68,637	13,049	582	82,268	(3,616)
2007	43,344	8,790	1,140	53,274	22,313			22,313	65,657	8,790	1,140	75,587	71,325	10,461	1,630	83,416	(7,829)
2008	50,462	14,599	1,828	66,889	24,239			24,239	74,701	14,599	1,828	91,128	76,704	14,602	1,584	92,890	(1,762)
2009	45,711	27,641	1,317	74,669	25,134			25,134	70,845	27,641	1,317	99,803	70,949	27,150	1,261	99,360	443
2010	47,081	16,265	1,659	65,005	24,501			24,501	71,582	16,265	1,659	89,506	72,533	16,244	1,830	90,607	(1,101)
2011	46,005	20,519	1,849	68,373	26,587			26,587	72,592	20,519	1,849	94,960	73,589	20,550	1,468	95,607	(647)
2012	47,457	7,957	1,816	57,230	25,170			25,170	72,627	7,957	1,816	82,400	74,098	7,987	1,720	83,805	(1,405)
2013	48,188	9,432	2,045	59,665	25,808			25,808	73,996	9,432	2,045	85,473	73,938	9,427	1,769	85,134	339
2014	48,854	13,733	1,632	64,219	26,128			26,128	74,982	13,733	1,632	90,347	78,604	13,724	1,762	94,090	(3,743)
2010																	
January	3,158	646	4	3,808	3,019			3,019	6,177	646	4	6,827	7,822	642	-	8,464	(1,637)
February	2,379	-	5	2,384	2,083			2,083	4,462	-	5	4,467	5,096	-	1	5,097	(630)
March	3,134	853	5	3,992	1,730			1,730	4,864	853	5	5,722	4,993	850	7	5,850	(128)
April	2,818	2,802	30	5,650	1,906			1,906	4,724	2,802	30	7,556	5,101	2,806	34	7,941	(385)
May	3,670	5,303	177	9,150	2,230			2,230	5,900	5,303	177	11,380	4,929	5,302	107	10,338	1,042
June	4,701	-	275	4,976	1,888			1,888	6,589	-	275	6,864	5,173	-	344	5,517	1,347
July	4,900	-	238	5,138	1,814			1,814	6,714	-	238	6,952	7,428	-	386	7,814	(862)
August	4,216	-	246	4,462	1,848			1,848	6,064	-	246	6,310	6,342	-	231	6,573	(263)
September	4,576	5,275	188	10,039	1,756			1,756	6,332	5,275	188	11,795	6,379	5,253	165	11,797	(2)
October	3,467	-	352	3,819	1,809			1,809	5,276	-	352	5,628	6,107	-	403	6,510	(882)
November	3,569	1,386	126	5,081	2,378			2,378	5,947	1,386	126	7,459	5,990	1,391	130	7,511	(52)
December	6,493	-	13	6,506	2,040			2,040	8,533	-	13	8,546	7,173	-	22	7,195	1,351
2011																	
January	2,844	-	2	2,846	3,185			3,185	6,029	-	2	6,031	7,755	-	-	7,755	(1,724)
February	2,302	6,847	14	9,163	1,985			1,985	4,287	6,847	14	11,148	6,031	6,859	5	12,895	(1,747)
March	2,477	1,407	16	3,900	1,947			1,947	4,424	1,407	16	5,847	4,526	1,411	18	5,955	(108)
April	3,520	3,038	37	6,595	2,152			2,152	5,672	3,038	37	8,747	5,367	3,045	15	8,427	320
May	3,812	-	250	4,062	2,588			2,588	6,400	-	250	6,650	5,565	-	89	5,654	996
June	4,323	-	242	4,565	1,913			1,913	6,236	-	242	6,478	5,240	-	194	5,434	1,044
July	5,280	2,376	239	7,895	1,998			1,998	7,278	2,376	239	9,893	7,415	2,378	232	10,025	(132)
August	4,486	-	419	4,905	1,889			1,889	6,375	-	419	6,794	7,266	-	199	7,465	(671)
September	3,561	-	242	3,803	2,063			2,063	5,624	-	242	5,866	6,315	4,391	281	10,987	(5,121)
October	3,155	4,387	257	7,799	2,164			2,164	5,319	4,387	257	9,963	5,927	-	280	6,207	3,756
November	2,996	-	112	3,108	2,354			2,354	5,350	-	112	5,462	5,252	-	135	5,387	75
December	7,249	2,464	19	9,732	2,349			2,349	9,598	2,464	19	12,081	6,930	2,466	20	9,416	2,665
2012																	
January	3,043	-	-	3,043	3,018			3,018	6,061	-	-	6,061	8,296	-	-	8,296	(2,235)
February	2,241	1,220	4	3,465	1,913			1,913	4,154	1,220	4	5,378	5,637	1,365	3	7,005	(1,627)
March	2,629	865	15	3,509	1,927			1,927	4,556	865	15	5,436	4,866	816	10	5,692	(256)
April	3,022	3,063	44	6,129	1,847			1,847	4,869	3,063	44	7,976	5,044	2,999	46	8,089	(113)
May	3,497	-	302	3,799	2,486			2,486	5,983	-	302	6,285	5,310	-	83	5,393	892
June	4,892	-	182	5,074	1,836			1,836	6,728	-	182	6,910	4,764	-	249	5,013	1,897
July	5,789	-	235	6,024	1,880			1,880	7,669	-	235	7,904	7,677	-	194	7,871	33
August	4,286	-	254	4,540	1,986			1,986	6,272	-	254	6,526	6,966	-	269	7,235	(709)
September	4,156	-	351	4,507	1,966			1,966	6,122	-	351	6,473	5,939	-	313	6,252	221
October	3,909	1,817	315	6,041	1,725			1,725	5,634	1,817	315	7,766	6,566	1,815	334	8,715	(949)
November	4,052	618	86	4,756	2,459			2,459	6,511	618	86	7,215	5,914	618	193	6,725	490
December	5,941	374	28	6,343	2,127			2,127	8,068	374	28	8,470	7,119	374	26	7,519	951
2013																	
January	2,927	922	9	3,858	3,085			3,085	6,012	922	9	6,943	7,440	922	8	8,370	(1,427)
February	2,621	1,310	2	3,933	1,816			1,816	4,437	1,310	2	5,749	6,077	1,310	-	7,387	(1,638)
March	2,797	626	11	3,434	1,880			1,880	4,677	626	11	5,314	5,035	626	10	5,671	(357)
April	3,088	3,205	50	6,343	2,096			2,096	5,184	3,205	50	8,439	5,100	3,204	14	8,318	121
May	3,965	-	328	4,293	2,740			2,740	6,705	-	328	7,033	5,815	-	132	5,947	1,086
June	4,693	700	182	5,575	2,046			2,046	6,739	700	182	7,621	5,411	700	193	6,304	1,317
July	5,415	-	282	5,697	2,183			2,183	7,598	-	282	7,880	7,747	-	220	7,967	(87)
August	4,753	-	305	5,058	2,051			2,051	6,804	-	305	7,109	7,227	-	267	7,494	(385)
September	4,068	1,954	339	6,361	1,711			1,711	5,779	1,954	339	8,072	5,579	1,950	291	7,820	252
October	4,037	-	403	4,440	1,789			1,789	5,826	-	403	6,229	6,111	-	384	6,495	(266)
November	3,395	715	121	4,231	2,363			2,363	5,758	715	121	6,594	5,165	715	232	6,112	482
December	6,429	-	13	6,442	2,048			2,048	8,477	-	13	8,490	7,231	-	18	7,249	1,241
2014																	
January	3,259	1,446	3	4,708	3,167			3,167	6,426	1,446	3	7,875	8,028	1,444	-	9,472	(1,597)
February	2,441	3,677	24	6,142	1,861			1,861	4,302	3,677	24	8,003	5,958	3,676	14	9,648	(1,645)
March	2,484	1,817	10	4,311	1,880			1,880	4,364	1,817	10	6,191	4,885	1,811	22	6,718	(527)
April	3,363	2,224	57	5,644	2,034			2,034	5,397	2,224	57	7,678	5,063	2,227	40	7,330	348
May	4,189	260	243	4,692	2,872			2,872	7,061	260	243	7,564	6,228	260	94	6,582	982
June	4,463	1,739	256	6,458	2,122			2,122	6,585	1,739	256	8,580	5,605	1,737	294	7,636	944
July	5,477	-	233	5,710	2,128			2,128	7,605	-	233	7,838	8,213	-	286	8,499	(661)
Aug	5,090	-	201	5,291	1,432			1,432	6,522	-	201	6,723	6,753	-	192	6,945	(222)
September	4,779	308	209	5,296	2,248			2,248	7,027	308	209	7,544	7,035	308	271	7,614	(70)
October	4,102	1,760	307	6,169	2,064			2,064	6,166	1,760	307	8,233	6,588	1,759	381	8,728	(495)
November	3,488	199	81	3,768	2,559			2,559	6,047	199	81	6,327	5,892	199	155	6,246	81
December	7,301	303	8	7,612	2,206			2,206	9,507	303	8	9,818	8,356	303	13	8,672	1,146
2015																	
January	3,343	2,935	20	6,298	3,720			3,720	7,063	2,935	20	10,018	8,779	2,935	29	11,743	(1,725)
February	2,381	2,373	23	4,777	2,119			2,119	4,500	2,373	23	6,896	5,498	2,373	7	7,878	(982)
March	2,944	2,011	6	4,961	2,277			2,277	5,221	2,011	6	7,238	5,635	2,011	9	7,655	(417)
April	3,642	1,940	31	5,613	2,277			2,277	5,919	1,940	31	7,890	6,408	1,940	30	8,378	(488)
May	3,820	555	203	4,578	2,690			2,690	6,510	555	203	7,268	5,968	555	89	6,612	656
June	5,898	1,757	155	7,810	3,652			3,652	9,550	1,757	155	11,462	5,600	1,757	251	7,608	3,854
July	5,961	-	1														

Table 2. Total Arrivals by Age, Type of Passangers and Gender September, 2015

Age Group	Type of Passangers								
	Total			Visitors			Returning Residents		
	Total	Male	Female	Total	Male	Female	Total	Male	Female
0-4	292	140	152	187	94	94	105	46	59
5-9	243	107	136	187	81	106	56	26	30
10-14	306	171	135	217	112	105	89	59	30
15-19	442	218	223	276	101	175	166	117	48
20-24	460	223	237	250	108	142	210	115	95
25-29	660	340	320	395	174	221	265	166	99
30-34	641	363	278	380	190	189	261	173	89
35-39	653	352	301	417	214	203	236	138	98
40-44	682	374	309	438	224	214	244	149	95
45-49	697	372	325	480	245	235	217	127	91
50-54	714	387	327	522	277	245	192	110	82
55-59	555	295	259	427	220	207	128	75	53
60-64	396	216	180	299	170	129	98	46	51
65-69	308	173	135	229	126	103	79	47	32
70-74	164	79	84	113	53	61	50	27	24
75+	156	78	78	98	55	43	59	24	35
Total	7,369	3,889	3,480	4,915	2,444	2,471	2,454	1,445	1,009
% Distribution	100.0	52.8	47.2	66.7	33.2	33.5	33.3	19.6	13.7

Table 3. Total Visitors by Usual Residence and Purpose of Visit September, 2015

Country of Usual Residence	Purpose of Visit						
	Total	% Distribution	Holiday/Vacation	Business/Conference	Visiting Relative/Friends	Other Reasons	Not Stated
Australia	1,353	27.5	810	91	326	104	22
New Zealand	2,021	41.1	1,049	142	654	119	57
Fiji	192	3.9	28	91	33	28	12
American Samoa	2	0.0	-	-	1	1	-
Western Samoa	13	0.3	3	9	-	1	-
Other Pacific Islands	95	1.9	2	30	16	42	4
Japan	135	2.7	87	20	13	7	7
China	65	1.3	30	4	14	14	2
India	9	0.2	3	2	1	2	1
Korea	10	0.2	9	1	-	-	-
Other Asian Countries	49	1.0	32	11	3	1	2
UK	90	1.8	73	5	2	2	7
Germany	101	2.1	95	1	2	-	3
France	23	0.5	19	3	-	1	-
Italy	9	0.2	9	-	-	-	-
Other European Countries	130	2.6	117	3	6	-	3
All African Countries	8	0.2	4	4	-	-	-
United States of America	553	11.2	308	28	170	27	21
Canada	42	0.9	36	-	2	1	3
Other American Countries	16	0.3	15	1	-	-	-
Total	4,915	100.0	2,729	446	1,245	351	144
% Distribution	100.0		55.5	9.1	25.3	7.1	2.9

Table 4: AIR DEPARTURES by Age Group, Passanger's Type for September, 2015

Age Group	Returning Residence	Percentage Distribution	Visitors	Percentage Distribution	Total	Percentage Distribution
0 - 4	111	4.7	157	3.7	268	4.1
5 - 9	77	3.3	100	2.3	177	2.7
10 - 14	97	4.1	129	3.0	226	3.4
15 - 19	177	7.5	121	2.8	298	4.5
20 - 24	187	7.9	320	7.5	507	7.7
25 - 29	241	10.2	371	8.7	612	9.3
30 - 34	216	9.2	417	9.8	633	9.6
35 - 39	221	9.4	343	8.1	563	8.5
40 - 44	187	7.9	383	9.0	570	8.6
45 - 49	216	9.2	401	9.4	617	9.3
50 - 54	180	7.6	433	10.2	613	9.3
55 - 59	160	6.8	378	8.9	538	8.2
60 - 64	113	4.8	279	6.6	391	5.9
65 - 69	83	3.5	203	4.8	286	4.3
70 - 74	37	1.6	107	2.5	143	2.2
75+	55	2.3	107	2.5	161	2.4
All Ages	2,357	100.0	4,247	100.0	6,604	100.0
YACHT	-	-	260	0	260	0
CRUISE SHIP	-	-	1,958	0	1,958	0
Total	2,576	100.0	6,465	100.0	8,822	100.0

Table 5. Total Departures by Country of Residence and Gender September, 2015

Country of Usual Residence	Male	Percent	Female	Percent	Total	Percent
	No.	Distribution	No.	Distribution		No.
Australia	550	15.7	562	18.2	1,112	16.8
New Zealand	901	25.7	900	29.1	1,801	27.3
Fiji	89	2.5	38	1.2	127	1.9
American Samoa	1	0.0	4	0.1	5	0.1
Western Samoa	13	0.4	2	0.1	15	0.2
Tonga	1,322	37.7	1,035	33.5	2,357	35.7
Other Pacific Islands	31	0.9	12	0.4	43	0.6
Japan	63	1.8	65	2.1	128	1.9
China	23	0.6	11	0.3	33	0.5
India	5	0.1	-	-	5	0.1
Korea	7	0.2	5	0.2	12	0.2
Other Asian Countries	45	1.3	21	0.7	66	1.0
UK	44	1.2	36	1.1	79	1.2
Germany	42	1.2	55	1.8	96	1.5
France	12	0.3	11	0.3	23	0.3
Italy	8	0.2	4	0.1	12	0.2
Other European Countries	51	1.5	57	1.8	108	1.6
All African Countries	7	0.2	2	0.1	9	0.1
United States of America	277	7.9	260	8.4	537	8.1
Canada	9	0.3	8	0.3	18	0.3
Other American Countries	11	0.3	7	0.2	18	0.3
Total	3,511	100.0	3,093	100.0	6,604	100.0