



SERIES NO.
SDT: 38-M 04



Government of Tonga

STATISTICAL BULLETIN

ON



MONTHLY MIGRATION STATISTICS SEPTEMBER 2012



Statistics Department
P.O. Box 149,
Nuku'alofa,
Kingdom of Tonga
Website: www.spc.int/prism/tonga/
E-mail: dept@stats.gov.to

November 2012

Price:

PREFACE

This bulletin is produced by the Statistics Department on monthly migration statistics of the Kingdom for the month of September 2012. It shows the international arrivals and departures by months back to January 2010, mode of transportation, type of passengers, purpose of visit, age group of passengers and some charts for analysis purposes.

The data is extracted from the arrival and departure cards of the Immigration Department, Ministry of Foreign Affairs, and Customs Department's vessel & yacht log book.

This bulletin also presents information relating to gender of passengers and country of usual residence, and country visited.

Special thank are extended to the Immigration Department of the Ministry of Foreign Affairs and Trade, Customs Department of the Ministry of Revenue Services, Airport Terminal Services and Ports Authority for their assistance in providing their administrative information relating to these statistics. I am also grateful particularly to my staff members who contributed to the compilation of this report.

Any suggestions that recipients of this bulletin wish to make for its future improvement will be welcome by the Statistics Department.

Mr. 'A'ata M. Finau

Government Statistician

Statistics Department

P.O.Box 149, Nuku'alofa, Tonga

Telephone: (676) 23 – 300

Fax : (676) 24 – 303

Email : dept@stats.gov.to

Website : www.spc.int/prism/tonga/



Government of Tonga

INTERNATIONAL ARRIVALS AND DEPARTURES September 2012

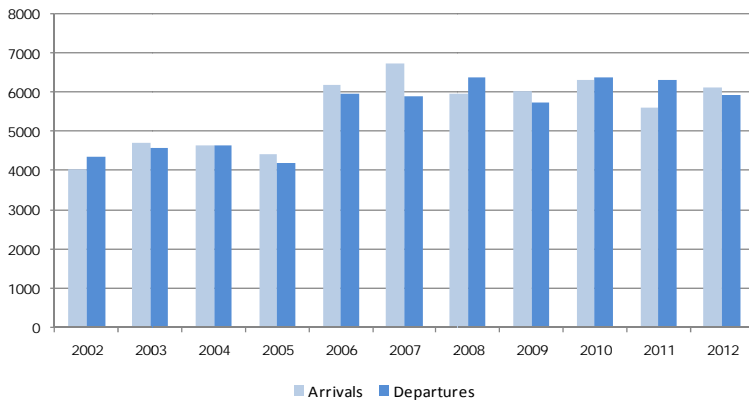
SD38M-04

Statistical Bulletin

Month of September 2012	Number	Change from previous month	Change from previous year
All Arrivals	6,473	-0.8	10.3
Air Visitors	4,156	-3.0	16.7
Air Returning Residents	1,966	-1.0	-4.7
Cruise Ships	-	-	-
Yachts	351	38.2	45.0
All Departures	6,252	-13.6	-5.2

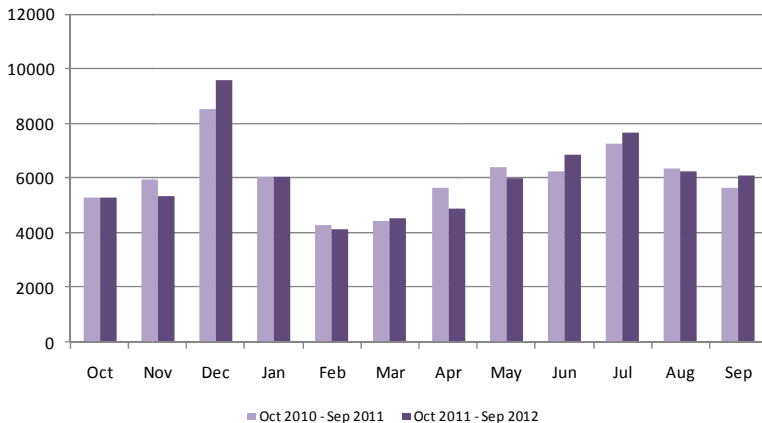
- A decline of 0.8% of all arrivals (6,473) compared to the previous month of August 2012 (6,526)
- A decline of 3.0% of all air visitors (4,156) compared to August 2012 (4,286)
- Again a decline of 1.0% (1,966) of returning residents compared to previous month (1,986)
- No cruise ships in September 2012
- An increase of 38.2% of yacht arrivals compared to the previous month
- A decline of 13.6% of all departures from August 2012

Fig 1: September Air Arrivals and Departures 2002 - 2012



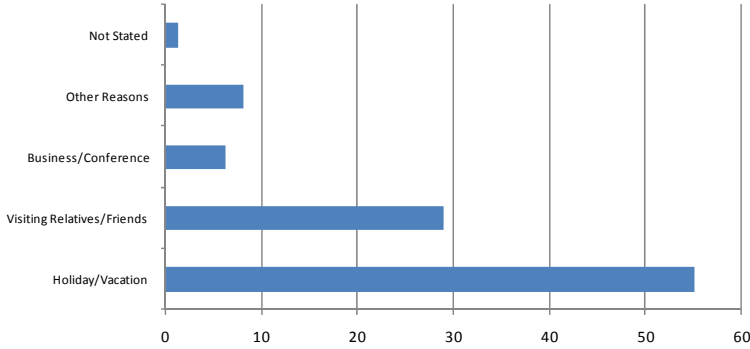
- Total arrivals in September 2012 were 6,473, an increase of 10.3% compared to September 2011(5,866).
- Total departures of 6,252 in September 2012, a decline of 5.2% compared to September 2011 (6,596)

Fig. 2: Monthly Air Arrivals vs the corresponding month of the previous year.



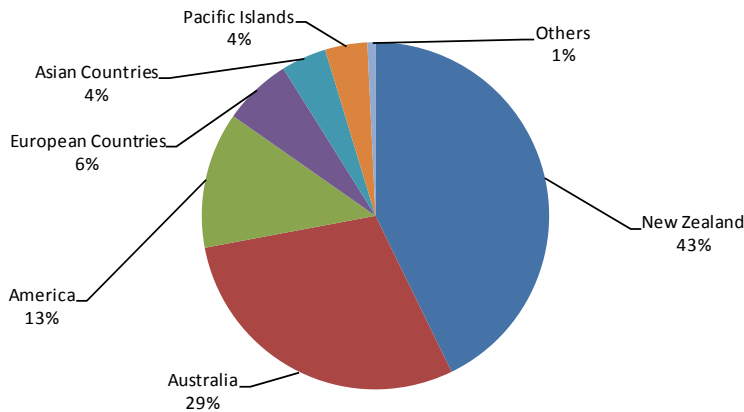
- Total air visitor arrivals in September 2012 were 4,156 an increase of 16.7% compared to September 2011 (3,561)

Fig. 3: Air Visitors by Purpose of Visit, September 2012



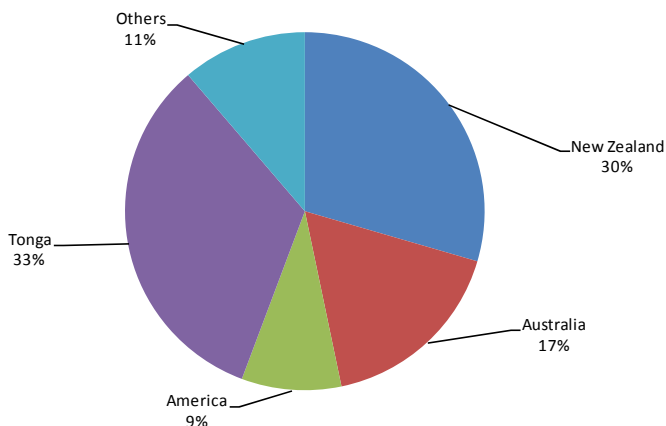
- Holiday/Vacation made up 55.0% (2,287) of all visitors to the Kingdom in the month of September.
- 29.0% (1,205) of the total visitors were here to Visit Relative/Friends.
- Visitors who were here on Business or Conference made up 6.4% (266) and those with other reasons were 8.2% (341)

Fig. 4: Air Visitors by Country of Usual Residence, September 2012



- New Zealand remains as the leading country in visitors arrivals by country of usual residence, accounting for 42.8% (1,778) of total air visitors
- This was followed by Australia with 29.3 % (1,217), and USA 12.7% (526)

Fig. 5: Air Departures by Country of Usual Residence, September 2012



- Most of the persons departing in the month of September were persons residing in the Kingdom of Tonga (1961) followed by New Zealand (1,752) and Australia (1,022)

Background Information

Data is extracted from the arrival and departure cards of the Immigration Department, Ministry of Foreign Affairs, and Customs vessel & yacht log book. The Statistics Department reconciles the figures from the Air Terminal Services Manifest and Ports Authority Manifest to produce final published data.

Statistics on Overseas Arrivals and Departures related to the number of movements of travelers rather than the number of travelers (i.e. the multiple movements of individual persons during a given reference period are all counted).

Definitions

- ▶ **A Visitor** is a person other than a Tongan citizen, permit holder and exempted person, who usually stay at least 24 hours in the Kingdom, or who stays overnight in accommodation within Tonga. This refers to passengers arriving by air and yacht only.
- ▶ **Cruise Ship Passengers** are defined as those who arrive and depart in the same vessel which is on a cruise trip, and use that vessel's accommodation during their stay in Tonga. They are also known as "Excursionist"
- ▶ **A Returning resident** is a person who has the Kingdom of Tonga as their permanent address for more than six months of the year and returns to Tonga after a trip overseas. Tongan residence is self-defined as reported by travelers when completing the Passenger Arrival Card.
- ▶ **Mode of Transport** Only air, yacht and cruise ships passengers are included. Passenger/crew on cargo, navy or special vessels are excluded.

The Statistics Department wishes to acknowledge the cooperation of the Immigration Department of the Ministry of Foreign Affairs and Trade and the Custom Department of the Ministry of Revenue Services, Air Terminal Services, Ports Authority making it possible to publish these important statistics.

Table 1. Monthly Arrival and Departure by Mode of Travel and Net Migration, 2010 - 2012

Period	Visitors Arrivals				Returning Residents				Total Arrivals				Total Departures				Net Migration
	Air	Ship	Yacht	Total	Air	Ship	Yacht	Total	Air	Ship	Yacht	Total	Air	Ship	Yacht	Total	
2005	42,437	11,840	943	55,220	21,066			21,066	63,503	11,840	943	76,286	60,276	11,871	1,393	73,540	2,746
2006	46,268	10,809	868	57,945	20,707			20,707	66,975	10,809	868	78,652	68,637	13,049	582	82,268	(3,616)
2007	43,344	8,790	1,140	53,274	22,313			22,313	65,657	8,790	1,140	75,587	71,325	10,461	1,630	83,416	(7,829)
2008	50,462	14,599	1,828	66,889	24,239			24,239	74,701	14,599	1,828	91,128	76,704	14,602	1,584	92,890	(1,762)
2009	45,711	27,641	1,317	74,669	25,134			25,134	70,845	27,641	1,317	99,803	70,949	27,150	1,261	99,360	443
2010	47,081	16,265	1,659	65,005	24,501			24,501	71,582	16,265	1,659	89,506	72,533	16,244	1,830	90,607	(1,101)
2011	46,005	20,519	1,849	68,373	26,587			26,587	72,592	20,519	1,849	94,960	73,589	20,550	1,468	95,607	(647)
2010																	
January	3,158	646	4	3,808	3,019			3,019	6,177	646	4	6,827	7,822	642	-	8,464	(1,637)
February	2,379	-	5	2,384	2,083			2,083	4,462	-	5	4,467	5,096	-	1	5,097	(630)
March	3,134	853	5	3,992	1,730			1,730	4,864	853	5	5,722	4,993	850	7	5,850	(128)
April	2,818	2,802	30	5,650	1,906			1,906	4,724	2,802	30	7,556	5,101	2,806	34	7,941	(385)
May	3,670	5,303	177	9,150	2,230			2,230	5,900	5,303	177	11,380	4,929	5,302	107	10,338	1,042
June	4,701	-	275	4,976	1,888			1,888	6,589	-	275	6,864	5,173	-	344	5,517	1,347
July	4,900	-	238	5,138	1,814			1,814	6,714	-	238	6,952	7,428	-	386	7,814	(862)
August	4,216	-	246	4,462	1,848			1,848	6,064	-	246	6,310	6,342	-	231	6,573	(263)
September	4,576	5,275	188	10,039	1,756			1,756	6,332	5,275	188	11,795	6,379	5,253	165	11,797	(2)
October	3,467	-	352	3,819	1,809			1,809	5,276	-	352	5,628	6,107	-	403	6,510	(882)
November	3,569	1,386	126	5,081	2,378			2,378	5,947	1,386	126	7,459	5,990	1,391	130	7,511	(52)
December	6,493	-	13	6,506	2,040			2,040	8,533	-	13	8,546	7,173	-	22	7,195	1,351
2011																	
January	2,844	-	2	2,846	3,185			3,185	6,029	-	2	6,031	7,755	-	-	7,755	(1,724)
February	2,302	6,847	14	9,163	1,985			1,985	4,287	6,847	14	11,148	6,031	6,859	5	12,895	(1,747)
March	2,477	1,407	16	3,900	1,947			1,947	4,424	1,407	16	5,847	4,526	1,411	18	5,955	(108)
April	3,520	3,038	37	6,595	2,152			2,152	5,672	3,038	37	8,747	5,367	3,045	15	8,427	320
May	3,812	-	246	4,058	2,588			2,588	6,400	-	246	6,646	5,565	-	89	5,654	992
June	4,323	-	242	4,565	1,913			1,913	6,236	-	242	6,478	5,240	-	194	5,434	1,044
July	5,280	2,376	243	7,899	1,998			1,998	7,278	2,376	243	9,897	7,415	2,378	232	10,025	(128)
August	4,486	-	419	4,905	1,889			1,889	6,375	-	419	6,794	7,266	-	199	7,465	(671)
September	3,561	-	242	3,803	2,063			2,063	5,624	-	242	5,866	6,315	-	281	6,596	(730)
October	3,155	4,387	257	7,799	2,164			2,164	5,319	4,387	257	9,963	5,927	4,391	280	10,598	(635)
November	2,996	-	112	3,108	2,354			2,354	5,350	-	112	5,462	5,252	-	135	5,387	75
December	7,249	2,464	19	9,732	2,349			2,349	9,598	2,464	19	12,081	6,930	2,466	20	9,416	2,665
2012																	
January	3,043	-	-	3,043	3,018			3,018	6,061	-	-	6,061	8,296	-	-	8,296	(2,235)
February	2,241	1,220	4	3,465	1,913			1,913	4,154	1,220	4	5,378	5,637	1,365	3	7,005	(1,627)
March	2,629	865	15	3,509	1,927			1,927	4,556	865	15	5,436	4,866	816	10	5,692	(256)
April	3,022	3,063	44	6,129	1,847			1,847	4,869	3,063	44	7,976	5,044	2,999	46	8,089	(113)
May	3,497	-	302	3,799	2,486			2,486	5,983	-	302	6,285	5,310	-	83	5,393	892
June	4,973	-	182	5,155	1,861			1,861	6,834	-	182	7,016	4,960	-	249	5,209	1,807
July	5,789	-	235	6,024	1,880			1,880	7,669	-	235	7,904	7,677	-	194	7,871	33
August	4,286	-	254	4,540	1,986			1,986	6,272	-	254	6,526	6,966	-	269	7,235	(709)
September	4,156	-	351	4,507	1,966			1,966	6,122	-	351	6,473	5,939	-	313	6,252	221

Table 2. Air Arrivals by Age, Type of Passenger and Gender, September 2012

Age	Type of Passenger								
	Total			Visitors			Returning Residents		
	Total	Male	Female	Total	Male	Female	Total	Male	Female
0-4	254	129	125	181	92	89	73	37	36
5-9	179	93	86	137	71	66	42	22	20
10-14	218	126	92	158	80	78	60	46	14
15-19	264	162	102	138	58	80	126	104	22
20-24	421	212	209	246	109	137	175	103	72
25-29	546	281	265	338	147	191	208	134	74
30-34	649	349	300	438	224	214	211	125	86
35-39	547	293	254	355	173	182	192	120	72
40-44	590	310	280	391	200	191	199	110	89
45-49	609	326	283	415	216	199	194	110	84
50-54	589	300	289	442	219	223	147	81	66
55-59	477	258	219	355	194	161	122	64	58
60-64	359	191	168	271	146	125	88	45	43
65-69	212	121	91	160	92	68	52	29	23
70-74	122	63	59	83	45	38	39	18	21
75+	86	39	47	48	24	24	38	15	23
Total	6,122	3,253	2,869	4,156	2,090	2,066	1,966	1,163	803
Percent Distribution	100.0	53.1	46.9	67.9	34.1	33.7	32.1	19.0	13.1

Table 3. Air Visitors by Country of Usual Residence and Purpose of Visit, September 2012

Country of Usual Residence	Purpose of Visit						
	Total	Percent Distribution	Holiday/Vacation	Business/Conference	Visiting Relative/Friends	Other Reasons	Not Stated
Australia	1,217	29.3	778	49	314	60	16
New Zealand	1,778	42.8	898	77	689	90	24
Fiji	114	2.7	10	45	28	31	-
American Samoa	2	0.0	1	1	-	-	-
Western Samoa	15	0.4	2	5	3	4	1
Other Pacific Islands	33	0.8	11	14	2	6	-
Japan	65	1.6	48	7	6	4	-
China	32	0.8	5	9	6	8	4
India	1	0.0	-	-	1	-	-
Korea	2	0.0	-	-	1	1	-
Other Asian Countries	75	1.8	58	8	1	8	-
UK	42	1.0	36	4	2	-	-
Germany	76	1.8	71	1	2	1	1
France	9	0.2	9	-	-	-	-
Italy	10	0.2	10	-	-	-	-
Other European Countries	128	3.1	118	3	3	3	1
All African Countries	6	0.1	1	1	3	1	-
United States of America	526	12.7	210	41	144	121	10
Canada	15	0.4	11	1	-	3	-
Other American Countries	10	0.2	10	-	-	-	-
Total	4,156	100.0	2,287	266	1,205	341	57
Percent Distribution	100.0		55.0	6.4	29.0	8.2	1.4

Table 4: Air Departures by Age Groups and Passengers Type, September 2012

Age Group	Returning Residents	Percentage Distribution	Visitors	Percentage Distribution	Total	Percentage Distribution
0 - 4	81	4.1	177	4.4	258	4.3
5 - 9	56	2.9	100	2.5	156	2.6
10 - 14	68	3.5	81	2.0	149	2.5
15 - 19	126	6.4	101	2.5	227	3.8
20 - 24	153	7.8	289	7.3	442	7.4
25 - 29	219	11.2	355	8.9	574	9.7
30 - 34	157	8.0	400	10.1	557	9.4
35 - 39	176	9.0	368	9.3	544	9.2
40 - 44	204	10.4	358	9.0	562	9.5
45 - 49	199	10.1	406	10.2	605	10.2
50 - 54	161	8.2	416	10.5	577	9.7
55 - 59	111	5.7	351	8.8	462	7.8
60 - 64	114	5.8	268	6.7	382	6.4
65 - 69	63	3.2	170	4.3	233	3.9
70 - 74	44	2.2	86	2.2	130	2.2
75+	29	1.5	52	1.3	81	1.4
All Ages	1,961	100.0	3,978	100.0	5,939	100.0

Table 5. Air Departures by Country of Usual Residence and Gender, September 2012

Country of Usual Residence	Male	Percent Distribution	Female	Percent Distribution	Total	Percent Distribution
Australia	480	15.2	542	19.5	1,022	17.2
New Zealand	844	26.8	908	32.6	1,752	29.5
Fiji	73	2.3	41	1.5	114	1.9
American Samoa	4	0.1	1	0.0	5	0.1
Western Samoa	4	0.1	10	0.4	14	0.2
Tonga	1,151	36.5	810	29.1	1,961	33.0
Other Pacific Islands	17	0.5	18	0.6	35	0.6
Japan	43	1.4	22	0.8	65	1.1
China	24	0.8	9	0.3	33	0.6
India	1	0.0	2	0.1	3	0.1
Korea	3	0.1	1	0.0	4	0.1
Other Asian Countries	31	1.0	36	1.3	67	1.1
UK	28	0.9	22	0.8	50	0.8
Germany	46	1.5	48	1.7	94	1.6
France	7	0.2	6	0.2	13	0.2
Italy	5	0.2	3	0.1	8	0.1
Other European Countries	61	1.9	57	2.0	118	2.0
All African Countries	4	0.1	6	0.2	10	0.2
United States of America	310	9.8	224	8.0	534	9.0
Canada	13	0.4	12	0.4	25	0.4
Other American Countries	6	0.2	6	0.2	12	0.2
Total	3,155	100.0	2,784	100.0	5,939	100.0



**Printed by STATISTICS DEPARTMENT
Nuku'alofa, TONGA—2012**
