



Government of Tonga

SERIES NO.
SDT: 38-M02

STATISTICAL BULLETIN

ON

MONTHLY

MIGRATION STATISTICS

JULY 2012

Statistics Department
P.O. Box 149,
Nuku'alofa,
Kingdom of Tonga
Website: www.spc.int/prism/tonga/
E-mail: dept@stats.gov.to

September 2012

Price:

PREFACE

This bulletin is the second of its type to be produced by the Statistics Department on monthly migration statistics of the Kingdom for the month of July 2012. It shows the international arrivals and departures by months back to January 2010, mode of transportation, type of passengers, purpose of visit, age group of passengers and some charts for analysis purposes.

The data is extracted from the arrival and departure cards of the Immigration Department, Ministry of Foreign Affairs, and Customs Department's vessel & yacht log book.

This bulletin also presents information relating to gender of passengers and country of usual residence, and country visited.

Special thank are extended to the Immigration Department of the Ministry of Foreign Affairs and Trade, Customs Department of the Ministry of Revenue Services, Airport Terminal Services and Ports Authority for their assistance in providing their administrative information relating to these statistics. I am also grateful particularly to my staff members who contributed to the compilation of this report.

Any suggestions that recipients of this bulletin wish to make for its future improvement will be welcome by the Statistics Department.

Mr. 'Ata'ata M. Finau

Government Statistician

Statistics Department

P.O.Box 149, Nuku'alofa, Tonga

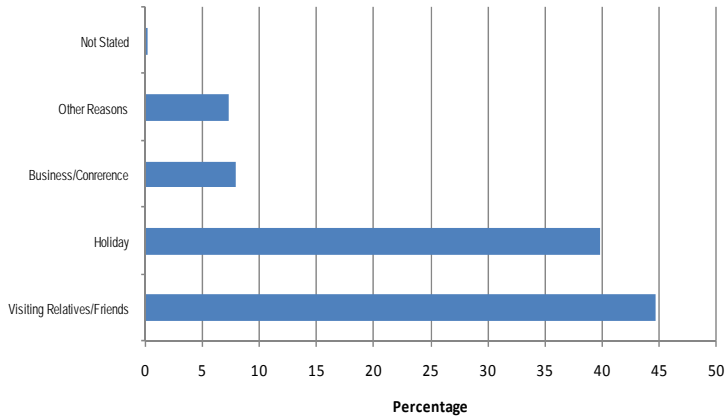
Telephone: (676) 23 – 300

Fax : (676) 24 – 303

Email : dept@stats.gov.to

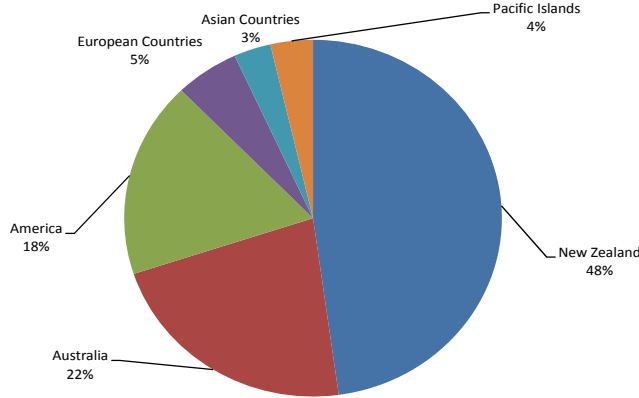
Website : www.spc.int/prism/tonga/

Fig 3: Air Visitors by Purpose of Visit, July 2012



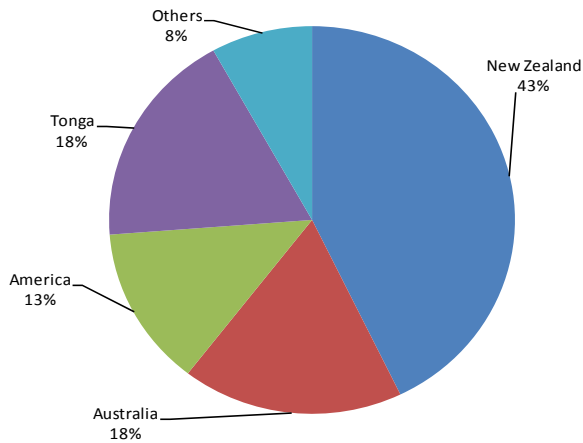
- Visiting relatives and friends made up 44.7% (2,585) of all visitors to the Kingdom in the month of July.
- Similarly 39.8% (2,303) of the total visitors were here for holidays.
- Visitors who were here on business or conference made up 7.9% (457) followed by other reasons with 7.4% (429)

Fig 4: Air Visitors by Country of Usual Residence, July 2012



- New Zealand remains as the leading country in visitors arrivals by country of usual residence, accounting for 48% (2,764) of total air visitors
- This was followed by Australia with 22% (1,279), and America 17% (960)

Fig. 5: Total Departures by Country of Usual Residence, July 2012



- Most of the persons departing in the month of July were persons residing in New Zealand (3,284) followed by Tonga (1,392) and Australia (1,362)

Background Information

Data is extracted from the arrival and departure cards of the Immigration Department, Ministry of Foreign Affairs, and Customs vessel & yacht log book. The Statistics Department reconciles the figures from the Air Terminal Services Manifest and Ports Authority Manifest to produce final published data.

Statistics on Overseas Arrivals and Departures related to the number of movements of travelers rather than the number of travelers (i.e. the multiple movements of individual persons during a given reference period are all counted).

Definitions

- ▶ **A Visitor** is a person other than a Tongan citizen, permit holder and exempted person, who usually stay at least 24 hours in the Kingdom, or who stays overnight in accommodation within Tonga. This refers to passengers arriving by air and yacht only.
- ▶ **Cruise Ship Passengers** are defined as those who arrive and depart in the same vessel which is on a cruise trip, and use that vessel's accommodation during their stay in Tonga. They are also known as "Excursionist"
- ▶ **A Returning resident** is a person who has the Kingdom of Tonga as their permanent address for more than six months of the year and returns to Tonga after a trip overseas. Tongan residence is self-defined as reported by travelers when completing the Passenger Arrival Card.
- ▶ **Mode of Transport** Only air, yacht and cruise ships passengers are included. Passenger/crew on cargo, navy or special vessels are excluded.

The Statistics Department wishes to acknowledge the cooperation of the Immigration Department of the Ministry of Foreign Affairs and Trade and the Custom Department of the Ministry of Revenue Services, Air Terminal Services, Ports Authority making it possible to publish these important statistics.

Table 1. Monthly Arrival and Departure by Mode of Travel and Net Migration, 2010 - 2012

Period	Visitors Arrivals				Returning Residents				Total Arrivals				Total Departures				Net Migration
	Air	Ship	Yacht	Total	Air	Ship	Yacht	Total	Air	Ship	Yacht	Total	Air	Ship	Yacht	Total	
2005	42,437	11,840	943	55,220	21,066	-	-	21,066	63,503	11,840	943	76,286	60,276	11,871	1,393	73,540	2,746
2006	46,268	10,809	868	57,945	20,707	-	-	20,707	66,975	10,809	868	78,652	68,637	13,049	582	82,268	(3,616)
2007	43,344	8,790	1,140	53,274	22,313	-	-	22,313	65,657	8,790	1,140	75,587	71,325	10,461	1,630	83,416	(7,829)
2008	50,462	14,599	1,828	66,889	24,239	-	-	24,239	74,701	14,599	1,828	91,128	76,704	14,602	1,584	92,890	(1,762)
2009	45,711	27,641	1,317	74,669	25,134	-	-	25,134	70,845	27,641	1,317	99,803	70,949	27,150	1,261	99,360	443
2010	47,081	16,265	1,659	65,005	24,501	-	-	24,501	71,582	16,265	1,659	89,506	72,533	16,244	1,830	90,607	(1,101)
2011	46,005	20,519	1,849	68,373	26,587	-	-	26,587	72,592	20,519	1,849	94,960	73,589	20,550	1,468	95,607	(647)
2010																	
January	3,158	646	4	3,808	3,019	-	-	3,019	6,177	646	4	6,827	7,822	642	-	8,464	(1,637)
February	2,379	-	5	2,384	2,083	-	-	2,083	4,462	-	5	4,467	5,096	-	1	5,097	(630)
March	3,134	853	5	3,992	1,730	-	-	1,730	4,864	853	5	5,722	4,993	850	7	5,850	(128)
April	2,818	2,802	30	5,650	1,906	-	-	1,906	4,724	2,802	30	7,556	5,101	2,806	34	7,941	(385)
May	3,670	5,303	177	9,150	2,230	-	-	2,230	5,900	5,303	177	11,380	4,929	5,302	107	10,338	1,042
June	4,701	-	275	4,976	1,888	-	-	1,888	6,589	-	275	6,864	5,173	-	344	5,517	1,347
July	4,900	-	238	5,138	1,814	-	-	1,814	6,714	-	238	6,952	7,428	-	386	7,814	(862)
August	4,216	-	246	4,462	1,848	-	-	1,848	6,064	-	246	6,310	6,342	-	231	6,573	(263)
September	4,576	5,275	188	10,039	1,756	-	-	1,756	6,332	5,275	188	11,795	6,379	5,253	165	11,797	(2)
October	3,467	-	352	3,819	1,809	-	-	1,809	5,276	-	352	5,628	6,107	-	403	6,510	(882)
November	3,569	1,386	126	5,081	2,378	-	-	2,378	5,947	1,386	126	7,459	5,990	1,391	130	7,511	(52)
December	6,493	-	13	6,506	2,040	-	-	2,040	8,533	-	13	8,546	7,173	-	22	7,195	1,351
2011																	
January	2,844	-	2	2,846	3,185	-	-	3,185	6,029	-	2	6,031	7,755	-	-	7,755	(1,724)
February	2,302	6,847	14	9,163	1,985	-	-	1,985	4,287	6,847	14	11,148	6,031	6,859	5	12,895	(1,747)
March	2,477	1,407	16	3,900	1,947	-	-	1,947	4,424	1,407	16	5,847	4,526	1,411	18	5,955	(108)
April	3,520	3,038	37	6,595	2,152	-	-	2,152	5,672	3,038	37	8,747	5,367	3,045	15	8,427	320
May	3,812	-	246	4,058	2,588	-	-	2,588	6,400	-	246	6,646	5,565	-	89	5,654	992
June	4,323	-	242	4,565	1,913	-	-	1,913	6,236	-	242	6,478	5,240	-	194	5,434	1,044
July	5,280	2,376	243	7,899	1,998	-	-	1,998	7,278	2,376	243	9,897	7,415	2,378	232	10,025	(128)
August	4,486	-	419	4,905	1,889	-	-	1,889	6,375	-	419	6,794	7,266	-	199	7,465	(671)
September	3,561	-	242	3,803	2,063	-	-	2,063	5,624	-	242	5,866	6,315	-	281	6,596	(730)
October	3,155	4,387	257	7,799	2,164	-	-	2,164	5,319	4,387	257	9,963	5,927	4,391	280	10,598	(635)
November	2,996	-	112	3,108	2,354	-	-	2,354	5,350	-	112	5,462	5,252	-	135	5,387	75
December	7,249	2,464	19	9,732	2,349	-	-	2,349	9,598	2,464	19	12,081	6,930	2,466	20	9,416	2,665
2012																	
January	3,043	-	-	3,043	3,018	-	-	3,018	6,061	-	-	6,061	8,296	-	-	8,296	(2,235)
February	2,241	1,220	4	3,465	1,913	-	-	1,913	4,154	1,220	4	5,378	5,637	1,365	3	7,005	(1,627)
March	2,629	865	15	3,509	1,927	-	-	1,927	4,556	865	15	5,436	4,866	816	10	5,692	(256)
April	3,022	3,063	44	6,129	1,847	-	-	1,847	4,869	3,063	44	7,976	5,044	2,999	46	8,089	(113)
May	3,497	-	302	3,799	2,486	-	-	2,486	5,983	-	302	6,285	5,310	-	83	5,393	892
June	4,973	-	182	5,155	1,861	-	-	1,861	6,834	-	182	7,016	4,960	-	249	5,209	1,807
July	5,789	-	235	6,024	1,880	-	-	1,880	7,669	-	235	7,904	7,677	-	194	7,871	33

Table 2. Air Arrivals by Age, Type of Passenger and Gender, July 2012

Age				Type of Passenger					
	Total			Visitors			Returning Residents		
	Total	Male	Female	Total	Male	Female	Total	Male	Female
0-4	318	155	163	252	130	122	66	25	41
5-9	269	141	128	209	111	98	60	30	30
10-14	329	162	167	273	129	144	56	33	23
15-19	552	259	293	451	192	259	101	67	34
20-24	553	243	310	377	155	222	176	88	88
25-29	692	326	366	461	202	259	231	124	107
30-34	622	316	306	430	202	228	192	114	78
35-39	590	306	284	405	210	195	185	96	89
40-44	682	372	310	500	262	238	182	110	72
45-49	754	404	350	573	293	280	181	111	70
50-54	673	335	338	555	265	290	118	70	48
55-59	581	296	285	464	231	233	117	65	52
60-64	469	260	209	374	205	169	95	55	40
65-69	277	158	119	234	137	97	43	21	22
70-74	160	77	83	118	57	61	42	20	22
75+	145	73	72	110	53	57	35	20	15
ns	3	3	-	3	3	-	-	-	-
Total	7,669	3,886	3,783	5,789	2,837	2,952	1,880	1,049	831
Percentage Distribution	100.0	50.7	49.3	75.5	37.0	38.5	24.5	13.7	10.8

Table 3. Air Visitors by Usual Residence and Purpose of Visit, July 2012

Country of Usual Residence			Purpose of Visit				
	Total	Percentage Distribution	Holiday/Vacation	Business/Conference	Visiting Relative/Friends	Other Reasons	Not Stated
Australia	1,279	22.1	511	44	594	126	4
New Zealand	2,764	47.7	1100	225	1275	154	10
Fiji	159	2.7	20	59	41	39	0
American Samoa	10	0.2	0	2	6	2	0
Western Samoa	13	0.2	1	4	6	2	0
Other Pacific Islands	28	0.5	9	7	10	2	0
Japan	39	0.7	28	3	5	3	0
China	82	1.4	32	22	15	13	0
India	4	0.1	0	2	0	2	0
Korea	15	0.3	5	1	8	1	0
Other Asian Countries	44	0.8	19	7	11	7	0
UK	61	1.1	45	6	7	3	0
Germany	87	1.5	74	2	10	1	0
France	24	0.4	18	0	5	1	0
Italy	13	0.2	13	0	0	0	0
Other European Countries	132	2.3	118	3	6	5	0
All African Countries	9	0.2	5	2	1	1	0
United States of America	960	16.6	275	46	576	62	1
Canada	46	0.8	17	18	7	4	0
Other American Countries	20	0.3	13	4	2	1	0
Total	5,789	100.0	2,303	457	2,585	429	15
Percentage Distribution	100.0		39.8	7.9	44.7	7.4	0.3

Table 4: Air Departures by Age Groups and Passengers Type, July 2012

Age Group	Returning Residents	Percentage Distribution	Visitors	Percentage Distribution	Total	Percentage Distribution
0 - 4	53	3.8	281	4.5	334	4.4
5 - 9	38	2.7	319	5.1	357	4.7
10 - 14	33	2.4	357	5.7	390	5.1
15 - 19	90	6.5	484	7.7	574	7.5
20 - 24	149	10.7	400	6.4	549	7.2
25 - 29	164	11.8	419	6.7	583	7.6
30 - 34	129	9.3	422	6.7	551	7.2
35 - 39	125	9.0	431	6.9	556	7.2
40 - 44	146	10.5	565	9.0	711	9.3
45 - 49	124	8.9	605	9.6	729	9.5
50 - 54	85	6.1	589	9.4	674	8.8
55 - 59	89	6.4	501	8.0	590	7.7
60 - 64	69	5.0	390	6.2	459	6.0
65 - 69	49	3.5	279	4.4	328	4.3
70 - 74	30	2.2	133	2.1	163	2.1
75+	19	1.4	110	1.8	129	1.7
All Ages	1,392	100.0	6,285	100.0	7,677	100.0

Table 5. Air Departures by Country of Usual Residence and Gender, July 2012

Country of Usual Residence	Male	Percentage Distribution	Female	Percentage Distribution	Total	Percentage Distribution
Australia	625	16.4	737	19.1	1,362	17.7
New Zealand	1,578	41.4	1,706	44.2	3,284	42.8
Fiji	88	2.3	49	1.3	137	1.8
American Samoa	22	0.6	17	0.4	39	0.5
Western Samoa	3	0.1	7	0.2	10	0.1
Tonga	749	19.6	643	16.6	1,392	18.1
Other Pacific Islands	25	0.7	12	0.3	37	0.5
Japan	25	0.7	16	0.4	41	0.5
China	44	1.2	14	0.4	58	0.8
India	6	0.2	-	-	6	0.1
Korea	7	0.2	7	0.2	14	0.2
Other Asian Countries	18	0.5	14	0.4	32	0.4
UK	38	1.0	32	0.8	70	0.9
Germany	33	0.9	26	0.7	59	0.8
France	8	0.2	5	0.1	13	0.2
Italy	5	0.1	2	0.1	7	0.1
Other European Countries	51	1.3	40	1.0	91	1.2
All African Countries	6	0.2	2	0.1	8	0.1
United States of America	472	12.4	526	13.6	998	13.0
Canada	3	0.1	9	0.2	12	0.2
Other American Countries	7	0.2	-	-	7	0.1
Total	3,813	100.0	3,864	100.0	7,677	100.0



Government of Tonga

INTERNATIONAL ARRIVALS AND DEPARTURES JULY 2012

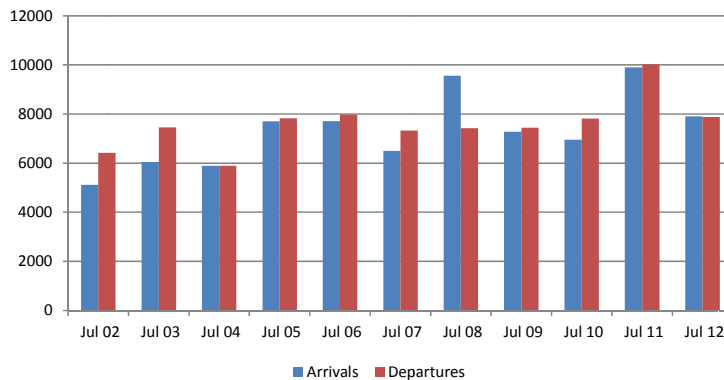
SD38M-02

Statistical Bulletin

July 2012	Number	Change from previous month	Change from previous year
All Arrivals	7,904	12.7%	-20.1%
Air Visitors	5,789	16.4%	9.6%
Air Returning Residents	1,880	1.0%	-5.9%
Cruise Ships	-	-	-
Yachts	235	29.1%	-3.3%
All Departures	7,871	51.1%	-21.5%

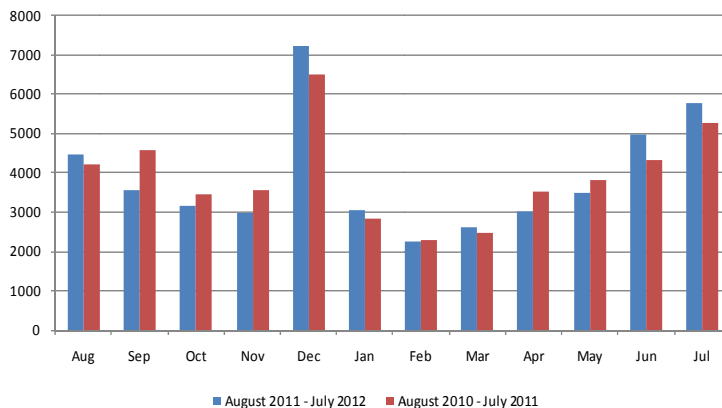
- An increase of 12.7% of all arrivals (7,904) compared to the previous month of June 2012 (7,016)
- An increase of 16.4% of all air visitors (5789) compared to June 2012 (4,973)
- An increase of 1.0% of returning residents compared to previous month (1,861)
- No cruise ships in July 2012
- An increase of 29.1% of yachts arrival compared to the previous month
- An increase of 51.1% of all departures from June 2012

Fig 1: July Total Arrivals & Departures 2002 - 2012



- Total arrivals in July 2012 were 7,904, a decline of 20.1% compared to July 2011(9,897).
- Total departures of 7,871 in July 2012, a decline of 21.5% compared to July 2011 (10,025)

Fig. 2: Monthly Air Visitor Arrivals vs. the corresponding month of previous year



- Total air visitor arrivals in July 2012 were 5,789 an increase of 9.6% compared to July 2011 (5,280)
- Royal Wedding had contributed to increasing air visitors in July 2012



Printed by STATISTICS DEPARTMENT
Nuku'alofa, TONGA—2012
