



Government of Tonga

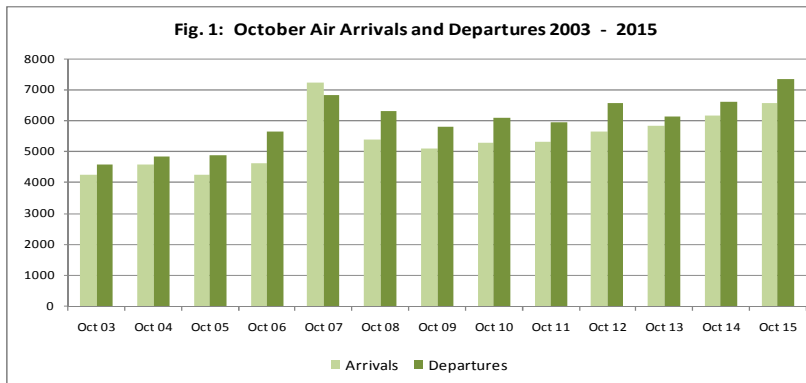
INTERNATIONAL ARRIVALS AND DEPARTURES October 2015

SD18M-41

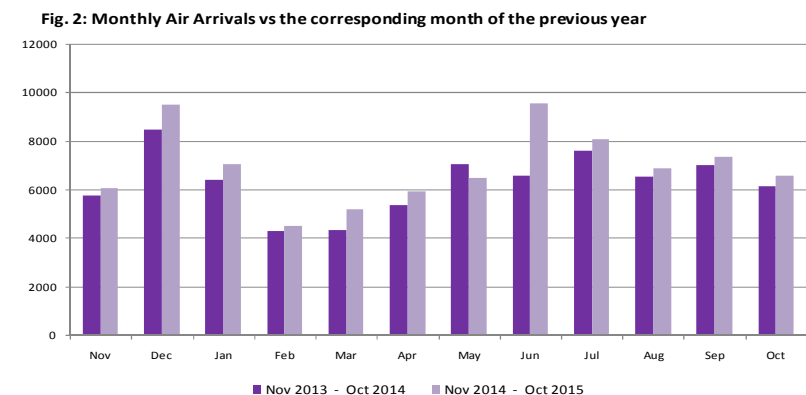
Statistical Bulletin

Month of	Number	Change from previous month	Change from previous year
October 2015			
All Arrivals	10,237	6.6	24.3
Air Visitors	4,045	-17.7	-1.4
Air Returning Residents	2,529	3.1	22.5
Cruise Ships	3,460	77.2	96.6
Yachts	203	-28.0	-33.9
All Departures	11,040	25.1	26.5

- An increase of 6.6% of all arrivals (10,237) compared to the previous month of September 2015 (9,604)
- A decline of 17.7% of all air visitors (4,045) compared to September 2015 (4,915)
- An increase of 3.1% of Returning Residents (2,529) compared to September 2015 (2,454).
- An increase of 77.2% of arrivals by cruise ship in the month of October, 2015 compared to September 2015
- A decline of 28.0% of yacht arrivals compared to the previous month
- An increase of 25.1% of all departures from September 2015

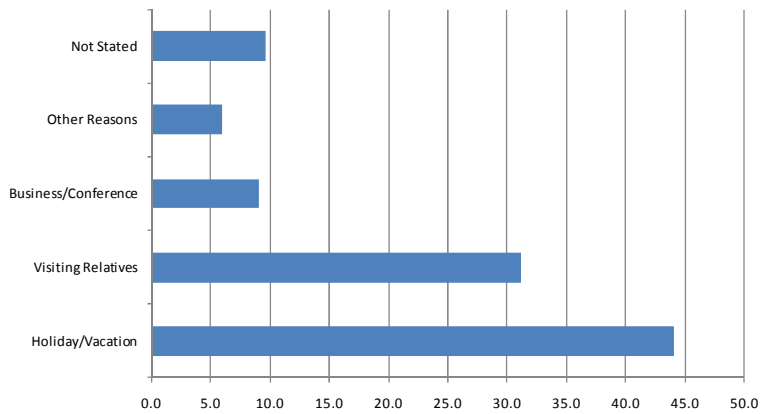


- Total air arrivals in October 2015 were 6,574 an increase of 6.6% compared to October 2014 (6,166).
- Total air departures of 7,326 in October 2015, an increase of 11.2% compared to October 2014 (6,588)



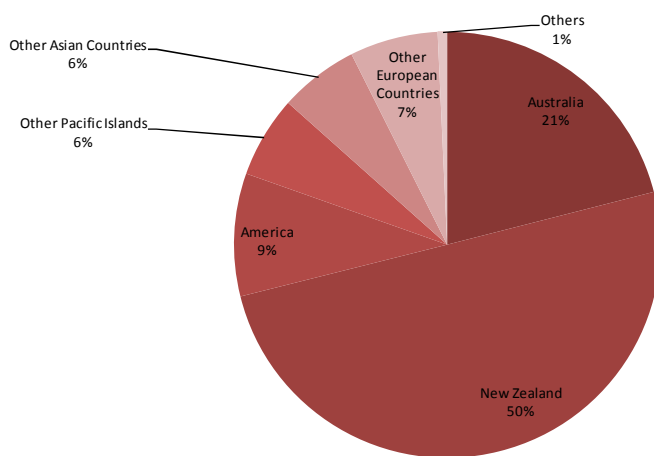
- Total air visitor arrivals in October 2015 were 4,045 a decline of 1.4% compared to October 2014 (4,102)

Fig. 3: Air Visitors by Purpose of Visit October, 2015



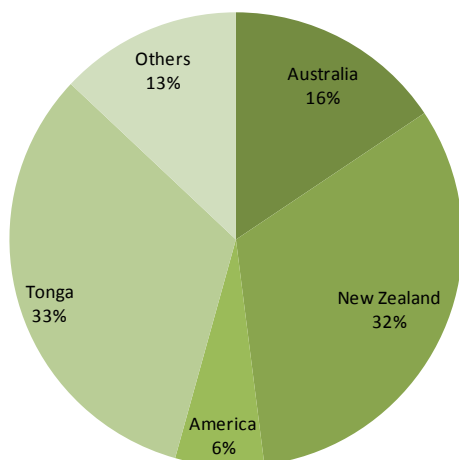
- Holiday/Vacation made up 44.0% (1,778) of all air visitors to the Kingdom in the month of October.
- 31.2% (1,263) of the total visitors were here to visit Relatives/friends
- Visitors who were here on Business or Conference made up 9.1% (369) and those with other reasons were 6.0% (241)

Fig. 4: Air Visitors by Country of Usual Residence October, 2015



- New Zealand remains as the leading country in visitors arrivals by country of usual residence, accounting for 50.1% (2,027) of total air visitors
- This was followed by Australia with 21.0 % (849), and USA 9.3% (376)

Fig. 5: Air Departures by Country of Usual Residence October, 2015



- Most of the persons departing in the month of October were persons residing in Tonga (2,398) followed by New Zealand (2,373) and Australia (1,146)

Background Information

Data is extracted from the arrival and departure cards of the Immigration Department, Ministry of Foreign Affairs and Customs vessel & yacht log book. The Statistics Department reconciles the figures from the Air Terminal Services Manifest, Tonga Airport Limited and Ports Authority Manifest to produce final published data.

Statistics on Overseas Arrivals and Departures related to the number of movements of travelers rather than the number of travelers (i.e. the multiple movements of individual persons during a given reference period are all counted).

Definitions

- ▶ **A Visitor** is a person other than a Tongan citizen, permit holder and exempted person, who usually stay at least 24 hours in the Kingdom, or who stays overnight in accommodation within Tonga. This refers to passengers arriving by air and yacht only.
- ▶ **Cruise Ship Passengers** are defined as those who arrive and depart in the same vessel which is on a cruise trip, and use that vessel's accommodation during their stay in Tonga. They are also known as "Excursionist"
- ▶ **A Returning resident** is a person who has the Kingdom of Tonga as their permanent address for more than six months of the year and returns to Tonga after a trip overseas. Tongan residence is self-defined as reported by travelers when completing the Passenger Arrival Card.
- ▶ **Mode of Transport** Only air, yacht and cruise ships passengers are included. Passenger/crew on cargo, navy or special vessels are excluded.

The Statistics Department wishes to acknowledge the cooperation of the Immigration Department of the Ministry of Foreign Affairs and Trade and the Custom Department of the Ministry of Revenue Services, Air Terminal Services, Ports Authority making it possible to publish these important statistics.

Table 1. Monthly Arrival and Departure by Mode of Travel and Net Migration, 2010 - 2015

Period	Visitors Arrivals				Returning Residents				Total Arrivals				Total Departures				Net Migration
	Air	Ship	Yacht	Total	Air	Ship	Yacht	Total	Air	Ship	Yacht	Total	Air	Ship	Yacht	Total	
2005	42,437	11,840	943	55,220	21,066			21,066	63,503	11,840	943	76,286	60,276	11,871	1,393	73,540	2,746
2006	46,268	10,809	868	57,945	20,707			20,707	66,975	10,809	868	78,652	68,637	13,049	582	82,268	(3,616)
2007	43,344	8,790	1,140	53,274	22,313			22,313	65,657	8,790	1,140	75,587	71,325	10,461	1,630	83,416	(7,829)
2008	50,462	14,599	1,828	66,889	24,239			24,239	74,701	14,599	1,828	91,128	76,704	14,602	1,584	92,890	(1,762)
2009	45,711	27,641	1,317	74,669	25,134			25,134	70,845	27,641	1,317	99,803	70,949	27,150	1,261	99,360	443
2010	47,081	16,265	1,659	65,005	24,501			24,501	71,582	16,265	1,659	89,506	72,533	16,244	1,830	90,607	(1,101)
2011	46,005	20,519	1,849	68,373	26,587			26,587	72,592	20,519	1,849	94,960	73,589	20,550	1,468	95,607	(647)
2012	47,457	7,957	1,816	57,230	25,170			25,170	72,627	7,957	1,816	82,400	74,098	7,987	1,720	83,805	(1,405)
2013	48,188	9,432	2,045	59,665	25,808			25,808	73,996	9,432	2,045	85,473	73,938	9,427	1,769	85,134	339
2014	48,854	13,733	1,632	64,219	26,128			26,128	74,982	13,733	1,632	90,347	78,604	13,724	1,762	94,090	(3,743)
2010																	
January	3,158	646	4	3,808	3,019			3,019	6,177	646	4	6,827	7,822	642	-	8,464	(1,637)
February	2,379	-	5	2,384	2,083			2,083	4,462	-	5	4,467	5,096	-	1	5,097	(630)
March	3,134	853	5	3,992	1,730			1,730	4,864	853	5	5,722	4,993	850	7	5,850	(128)
April	2,818	2,802	30	5,650	1,906			1,906	4,724	2,802	30	7,556	5,101	2,806	34	7,941	(385)
May	3,670	5,303	177	9,150	2,230			2,230	5,900	5,303	177	11,380	4,929	5,302	107	10,338	1,042
June	4,701	-	275	4,976	1,888			1,888	6,589	-	275	6,864	5,173	-	344	5,517	1,347
July	4,900	-	238	5,138	1,814			1,814	6,714	-	238	6,952	7,428	-	386	7,814	(862)
August	4,216	-	246	4,462	1,848			1,848	6,064	-	246	6,310	6,342	-	231	6,573	(263)
September	4,576	5,275	188	10,039	1,756			1,756	6,332	5,275	188	11,795	6,379	5,253	165	11,797	(2)
October	3,467	-	352	3,819	1,809			1,809	5,276	-	352	5,628	6,107	-	403	6,510	(882)
November	3,569	1,386	126	5,081	2,378			2,378	5,947	1,386	126	7,459	5,990	1,391	130	7,511	(52)
December	6,493	-	13	6,506	2,040			2,040	8,533	-	13	8,546	7,173	-	22	7,195	1,351
2011																	
January	2,844	-	2	2,846	3,185			3,185	6,029	-	2	6,031	7,755	-	-	7,755	(1,724)
February	2,302	6,847	14	9,163	1,985			1,985	4,287	6,847	14	11,148	6,031	6,859	5	12,895	(1,747)
March	2,477	1,407	16	3,900	1,947			1,947	4,424	1,407	16	5,847	4,526	1,411	18	5,955	(108)
April	3,520	3,038	37	6,595	2,152			2,152	5,672	3,038	37	8,747	5,367	3,045	15	8,427	320
May	3,812	-	250	4,062	2,588			2,588	6,400	-	250	6,650	5,565	-	89	5,654	996
June	4,323	-	242	4,565	1,913			1,913	6,236	-	242	6,478	5,240	-	194	5,434	1,044
July	5,280	2,376	239	7,895	1,998			1,998	7,278	2,376	239	9,893	7,415	2,378	232	10,025	(132)
August	4,486	-	419	4,905	1,889			1,889	6,375	-	419	6,794	7,266	-	199	7,465	(671)
September	3,561	-	242	3,803	2,063			2,063	5,624	-	242	5,866	6,315	4,391	281	10,987	(5,121)
October	3,155	4,387	257	7,799	2,164			2,164	5,319	4,387	257	9,963	5,927	-	280	6,207	3,756
November	2,996	-	112	3,108	2,354			2,354	5,350	-	112	5,462	5,252	-	135	5,387	75
December	7,249	2,464	19	9,732	2,349			2,349	9,598	2,464	19	12,081	6,930	2,466	20	9,416	2,665
2012																	
January	3,043	-	-	3,043	3,018			3,018	6,061	-	-	6,061	8,296	-	-	8,296	(2,235)
February	2,241	1,220	4	3,465	1,913			1,913	4,154	1,220	4	5,378	5,637	1,365	3	7,005	(1,627)
March	2,629	865	15	3,509	1,927			1,927	4,556	865	15	5,436	4,866	816	10	5,692	(256)
April	3,022	3,063	44	6,129	1,847			1,847	4,869	3,063	44	7,976	5,044	2,999	46	8,089	(1,113)
May	3,497	-	302	3,799	2,486			2,486	5,983	-	302	6,285	5,310	-	83	5,393	892
June	4,892	-	182	5,074	1,836			1,836	6,728	-	182	6,910	4,764	-	249	5,013	1,897
July	5,789	-	235	6,024	1,880			1,880	7,669	-	235	7,904	7,677	-	194	7,871	33
August	4,286	-	254	4,540	1,986			1,986	6,272	-	254	6,526	6,966	-	269	7,235	(709)
September	4,156	-	351	4,507	1,966			1,966	6,122	-	351	6,473	5,939	-	313	6,252	221
October	3,909	1,817	315	6,041	1,725			1,725	5,634	1,817	315	7,766	6,566	1,815	334	8,715	(949)
November	4,052	618	86	4,756	2,459			2,459	6,511	618	86	7,215	5,914	618	193	6,725	490
December	5,941	374	28	6,343	2,127			2,127	8,068	374	28	8,470	7,119	374	26	7,519	951
2013																	
January	2,927	922	9	3,858	3,085			3,085	6,012	922	9	6,943	7,440	922	8	8,370	(1,427)
February	2,621	1,310	2	3,933	1,816			1,816	4,437	1,310	2	5,749	6,077	1,310	-	7,387	(1,638)
March	2,797	626	11	3,434	1,880			1,880	4,677	626	11	5,314	5,035	626	10	5,671	(357)
April	3,088	3,205	50	6,343	2,096			2,096	5,184	3,205	50	8,439	5,100	3,204	14	8,318	121
May	3,965	-	328	4,293	2,740			2,740	6,705	-	328	7,033	5,815	-	132	5,947	1,086
June	4,693	700	182	5,575	2,046			2,046	6,739	700	182	7,621	5,411	700	193	6,304	1,317
July	5,415	-	282	5,697	2,183			2,183	7,598	-	282	7,880	7,747	-	220	7,967	(87)
August	4,753	-	305	5,058	2,051			2,051	6,804	-	305	7,109	7,227	-	267	7,494	(385)
September	4,068	1,954	339	6,361	1,711			1,711	5,779	1,954	339	8,072	5,579	1,950	291	7,820	252
October	4,037	-	403	4,440	1,789			1,789	5,826	-	403	6,229	6,111	-	384	6,495	(266)
November	3,395	715	121	4,231	2,363			2,363	5,758	715	121	6,594	5,165	715	232	6,112	482
December	6,429	-	13	6,442	2,048			2,048	8,477	-	13	8,490	7,231	-	18	7,249	1,241
2014																	
January	3,259	1,446	3	4,708	3,167			3,167	6,426	1,446	3	7,875	8,028	1,444	-	9,472	(1,597)
February	2,441	3,677	24	6,142	1,861			1,861	4,302	3,677	24	8,003	5,958	3,676	14	9,648	(1,645)
March	2,484	1,817	10	4,311	1,880			1,880	4,364	1,817	10	6,191	4,885	1,811	22	6,718	(527)
April	3,363	2,224	57	5,644	2,034			2,034	5,397	2,224	57	7,678	5,063	2,227	40	7,330	348
May	4,189	260	243	4,692	2,872			2,872	7,061	260	243	7,564	6,228	260	94	6,582	982
June	4,463	1,739	256	6,458	2,122			2,122	6,585	1,739	256	8,580	5,605	1,737	294	7,636	944
July	5,477	-	233	5,710	2,128			2,128	7,605	-	233	7,838	8,213	-	286	8,499	(661)
August	5,090	-	201	5,291	1,432			1,432	6,522	-	201	6,723	6,753	-	192	6,945	(222)
September	4,779	308	209	5,296	2,248			2,248	7,027	308	209	7,544	7,035	308	271	7,614	(70)
October	4,102	1,760	307	6,169	2,064			2,064	6,166	1,760	307	8,233	6,588	1,759	381	8,728	(495)
November	3,488	199	81	3,768	2,559			2,559	6,047	199	81	6,327	5,892	199	155	6,246	81
December	7,301	303	8	7,612	2,206			2,206	9,507	303	8	9,818	8,356	303	13	8,672	1,146
2015																	
January	3,343	2,935	20	6,298	3,720			3,720	7,063	2,935	20	10,018	8,779	2,935	29	11,743	(1,725)
February	2,381	2,373	23	4,777	2,119			2,119	4,500	2,373	23	6,896	5,498	2,373	7	7,878	(982)
March	2,944	2,011	6	4,961	2,277			2,277	5,221	2,011	6	7,238	5,635	2,011	9	7,655	(417)
April	3,642	1,940	31	5,613	2,277			2,277	5,919	1,940	31	7,890	6,408	1,940	30	8,378	(488)
May	3,820	555	203	4,578	2,690			2,690	6,510	555	203	7,268	5,968	555	89	6,612	656
June	5,898	1,757	155	7,810	3,652			3,652	9,550	1,757	155	11,462	5,600	1,757	251	7,608	3,854
July	5,961	-															

Table 2. Total Arrivals by Age, Type of Passangers and Gender October, 2015

Age Group	Type of Passangers								
	Total			Visitors			Returning Residents		
	Total	Male	Female	Total	Male	Female	Total	Male	Female
0-4	280	138	142	186	89	97	94	49	45
5-9	207	114	93	144	74	70	63	40	23
10-14	137	65	72	102	48	54	35	17	18
15-19	226	101	125	169	77	92	57	24	33
20-24	471	237	234	211	88	123	260	149	111
25-29	648	345	303	344	161	183	304	184	120
30-34	663	351	312	374	171	203	289	180	109
35-39	544	310	234	288	153	135	256	157	99
40-44	631	335	296	387	196	191	244	139	105
45-49	681	359	322	437	224	213	244	135	109
50-54	604	284	320	402	187	215	202	97	105
55-59	496	259	237	332	169	163	164	90	74
60-64	388	206	182	267	146	121	121	60	61
65-69	301	162	139	216	119	97	85	43	42
70-74	166	94	72	115	64	51	51	30	21
75+	131	70	61	71	39	32	60	31	29
Total	6,574	3,430	3,144	4,045	2,005	2,040	2,529	1,425	1,104
% Distribution	100.0	52.2	47.8	61.5	30.5	31.0	38.5	21.7	16.8

Table 3. Total Visitors by Usual Residence and Purpose of Visit October, 2015

Country of Usual Residence	Purpose of Visit						
	Total	% Distribution	Holiday/Vacation	Business/Conference	Visiting Relative/Friends	Other Reasons	Not Stated
Australia	849	21.0	368	71	284	59	67
New Zealand	2,027	50.1	870	140	741	99	177
Fiji	139	3.4	20	44	23	15	37
American Samoa	5	0.1	3	-	2	-	-
Western Samoa	31	0.8	5	5	8	12	1
Other Pacific Islands	74	1.8	8	34	15	7	10
Japan	36	0.9	10	9	7	6	4
China	150	3.7	89	17	12	9	23
India	9	0.2	-	3	3	-	3
Korea	4	0.1	1	2	1	-	-
Other Asian Countries	44	1.1	28	7	1	1	7
UK	48	1.2	32	5	5	1	5
Germany	92	2.3	82	-	5	2	3
France	24	0.6	17	2	3	-	2
Italy	4	0.1	3	1	-	-	-
Other European Countries	103	2.5	92	3	1	1	6
All African Countries	1	0.0	-	1	-	-	-
United States of America	376	9.3	134	21	149	27	45
Canada	20	0.5	14	2	1	1	2
Other American Countries	8	0.2	2	2	2	1	1
Total	4,044	100.0	1,778	369	1,263	241	393
% Distribution	100.0		44.0	9.1	31.2	6.0	9.7

Table 4: AIR DEPARTURES by Age Group, Passenger's Type for October, 2015

Age Group	Returning Residence	Percentage Distribution	Visitors	Percentage Distribution	Total	Percentage Distribution
0 - 4	92	3.8	197	4.0	289	3.9
5 - 9	53	2.2	218	4.4	271	3.7
10 - 14	30	1.3	216	4.4	246	3.4
15 - 19	64	2.7	344	7.0	408	5.6
20 - 24	222	9.3	247	5.0	469	6.4
25 - 29	278	11.6	364	7.4	642	8.8
30 - 34	264	11.0	411	8.3	675	9.2
35 - 39	219	9.1	369	7.5	588	8.0
40 - 44	225	9.4	431	8.7	656	9.0
45 - 49	231	9.6	518	10.5	749	10.2
50 - 54	213	8.9	481	9.8	694	9.5
55 - 59	166	6.9	389	7.9	555	7.6
60 - 64	131	5.5	296	6.0	427	5.8
65 - 69	97	4.0	223	4.5	320	4.4
70 - 74	61	2.5	124	2.5	185	2.5
75+	52	2.2	100	2.0	152	2.1
All Ages	2,398	100.0	4,928	100.0	7,326	100.0
YACHT	-	-	251	0	251	0
CRUISE SHIP	-	-	3,463	0	3463	0
Total	2,398	100	8,642	100	11,040	100

Table 5. Total Departures by Country of Residence and Gender October, 2015

Country of Usual Residence	Male	Percent	Female	Percent	Total	Percent
	No.	Distribution	No.	Distribution		No.
Australia	561	15.0	585	16.3	1,146	15.6
New Zealand	1,135	30.3	1,238	34.5	2,373	32.4
Fiji	115	3.1	61	1.7	176	2.4
American Samoa	2	0.1	2	0.1	4	0.1
Western Samoa	9	0.2	20	0.6	29	0.4
Tonga	1,335	35.7	1,063	29.7	2,398	32.7
Other Pacific Islands	55	1.5	67	1.9	122	1.7
Japan	22	0.6	14	0.4	36	0.5
China	57	1.5	77	2.1	134	1.8
India	10	0.3	1	0.0	11	0.2
Korea	5	0.1	2	0.1	7	0.1
Other Asian Countries	27	0.7	15	0.4	42	0.6
UK	37	1.0	39	1.1	76	1.0
Germany	48	1.3	55	1.5	103	1.4
France	11	0.3	16	0.4	27	0.4
Italy	1	0.0	1	0.0	2	0.0
Other European Countries	68	1.8	68	1.9	136	1.9
All African Countries	1	0.0	1	0.0	2	0.0
United States of America	223	6.0	235	6.6	458	6.3
Canada	14	0.4	16	0.4	30	0.4
Other American Countries	6	0.2	8	0.2	14	0.2
Total	3,742	100.0	3,584	100.0	7,326	100.0