



Government of Tonga

INTERNATIONAL ARRIVALS AND DEPARTURES December 2013

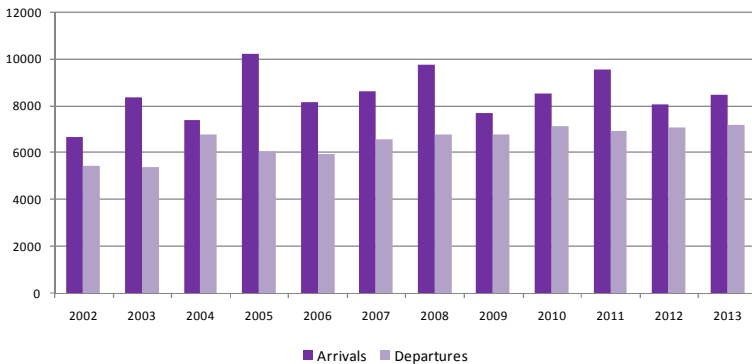
SD38M-07

Statistical Bulletin

Month of December 2013	Number	Change from previous month	Change from previous year
All Arrivals	8,490	28.8	0.2
Air Visitors	6,429	89.4	8.2
Air Returning Residents	2,048	-13.3	-3.7
Cruise Ships	-	-100.0	-100.0
Yachts	13	-89.3	-53.6
All Departures	7,249	18.6	-3.6

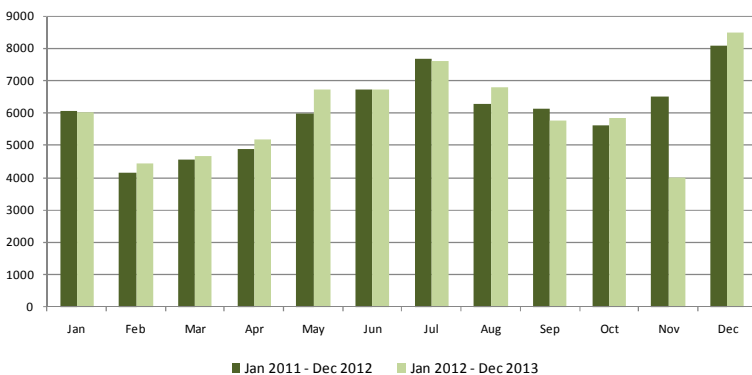
- An increase of 28.8% of all arrivals (8,490) compared to the previous month of November 2013 (6,594)
- An increase of 89.4% of all air visitors (6,429) compared to November 2013 (3,395)
- A decline of 13.3% (2,048) of returning residents compared to previous month (2,363)
- There were no cruise ship for the month of December.
- A decline of 89.3% of yacht arrivals compared to the previous month
- An increase of 18.6% of all departures from November 2013

Fig. 1: December Air Arrivals and Departures 2002 - 2013



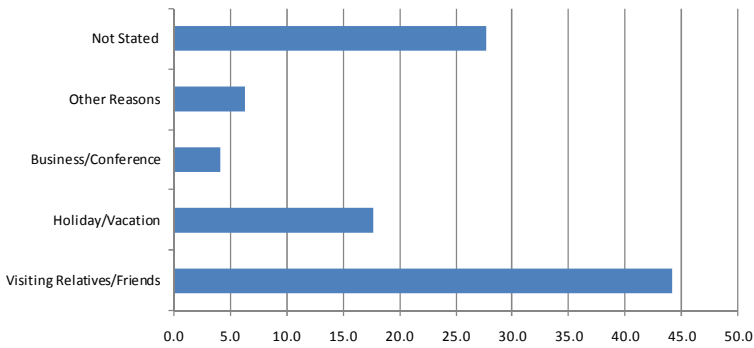
- Total air arrivals in December 2013 were 8,477 an increase of 5.1% compared to December 2012(8,068).
- Total air departures of 7,231 in December 2013, an increase of 1.6% compared to December 2012 (7,119)

Fig. 2: Monthly Air Arrivals vs the corresponding month of the previous year



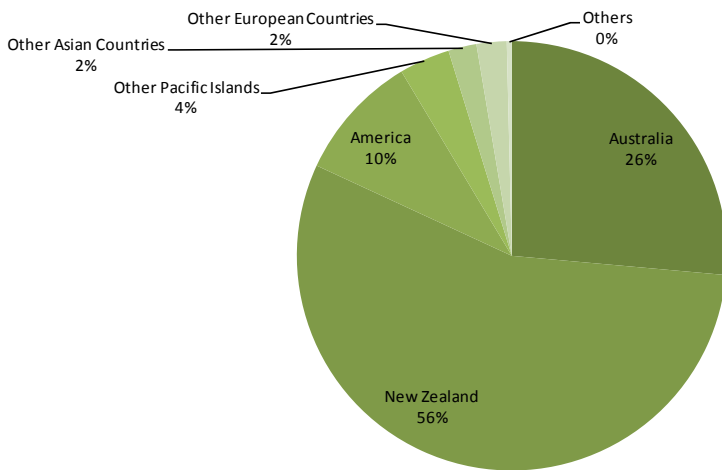
- Total air visitor arrivals in December 2013 were 6,429 an increase of 8.2% compared to December 2012 (5,941)

Fig. 3: Air Visitors by Purpose of Visit December, 2013



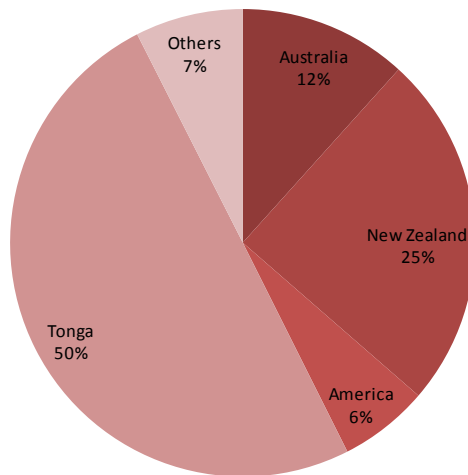
- Visiting Relatives/Friends made up 44.2% (2,842) of all air visitors to the Kingdom in the month of December.
- 17.7% (1,135) of the total visitors were here on Holiday/Vacation.
- Visitors who were here on Business or Conference made up 4.1% (261) and those with other reasons were 6.3% (408). 27.7% (1,783) didn't fill the reason of their visit.

Fig. 4: Air Visitors by Country of Usual Residence December, 2013



- New Zealand remains as the leading country in visitors arrivals by country of usual residence, accounting for 55.4% (3,562) of total air visitors
- This was followed by Australia with 26.4 % (1,699), and USA 9.5% (611)

Fig. 5: Air Departures by Country of Usual Residence December, 2013



- Most of the persons departing in the month of December were persons residing in the Kingdom of Tonga (3,617) followed by New Zealand (1,783) and Australia (845)

Background Information

Data is extracted from the arrival and departure cards of the Immigration Department, Ministry of Foreign Affairs and Customs vessel & yacht log book. The Statistics Department reconciles the figures from the Air Terminal Services Manifest, Tonga Airport Limited and Ports Authority Manifest to produce final published data.

Statistics on Overseas Arrivals and Departures related to the number of movements of travelers rather than the number of travelers (i.e. the multiple movements of individual persons during a given reference period are all counted).

Definitions

- ▶ **A Visitor** is a person other than a Tongan citizen, permit holder and exempted person, who usually stay at least 24 hours in the Kingdom, or who stays overnight in accommodation within Tonga. This refers to passengers arriving by air and yacht only.
- ▶ **Cruise Ship Passengers** are defined as those who arrive and depart in the same vessel which is on a cruise trip, and use that vessel's accommodation during their stay in Tonga. They are also known as "Excursionist"
- ▶ **A Returning resident** is a person who has the Kingdom of Tonga as their permanent address for more than six months of the year and returns to Tonga after a trip overseas. Tongan residence is self-defined as reported by travelers when completing the Passenger Arrival Card.
- ▶ **Mode of Transport** Only air, yacht and cruise ships passengers are included. Passenger/crew on cargo, navy or special vessels are excluded.

The Statistics Department wishes to acknowledge the cooperation of the Immigration Department of the Ministry of Foreign Affairs and Trade and the Custom Department of the Ministry of Revenue Services, Air Terminal Services, Ports Authority making it possible to publish these important statistics.

Table 1. Monthly Arrival and Departure by Mode of Travel and Net Migration, 2010 - 2013

Period	Visitors Arrivals				Returning Residents				Total Arrivals				Total Departures				Net Migration
	Air	Ship	Yacht	Total	Air	Ship	Yacht	Total	Air	Ship	Yacht	Total	Air	Ship	Yacht	Total	
2005	42,437	11,840	943	55,220	21,066			21,066	63,503	11,840	943	76,286	60,276	11,871	1,393	73,540	2,746
2006	46,268	10,809	868	57,945	20,707			20,707	66,975	10,809	868	78,652	68,637	13,049	582	82,268	(3,616)
2007	43,344	8,790	1,140	53,274	22,313			22,313	65,657	8,790	1,140	75,587	71,325	10,461	1,630	83,416	(7,829)
2008	50,462	14,599	1,828	66,889	24,239			24,239	74,701	14,599	1,828	91,128	76,704	14,602	1,584	92,890	(1,762)
2009	45,711	27,641	1,317	74,669	25,134			25,134	70,845	27,641	1,317	99,803	70,949	27,150	1,261	99,360	443
2010	47,081	16,265	1,659	65,005	24,501			24,501	71,582	16,265	1,659	89,506	72,533	16,244	1,830	90,607	(1,101)
2011	46,005	20,519	989	67,513	26,587			26,587	72,592	20,519	989	94,100	67,976	22,939	1,259	92,174	1,926
2012	47,457	7,957	1,816	57,230	25,170			25,170	72,627	7,957	1,816	82,400	74,098	7,987	1,720	83,805	(1,405)
2013	48,188	9,432	2,045	59,665	25,808			25,808	73,996	9,432	2,045	85,473	73,938	9,427	1,769	85,134	339
2010																	
January	3,158	646	4	3,808	3,019			3,019	6,177	646	4	6,827	7,822	642	-	8,464	(1,637)
February	2,379	-	5	2,384	2,083			2,083	4,462	-	5	4,467	5,096	-	1	5,097	(630)
March	3,134	853	5	3,992	1,730			1,730	4,864	853	5	5,722	4,993	850	7	5,850	(128)
April	2,818	2,802	30	5,650	1,906			1,906	4,724	2,802	30	7,556	5,101	2,806	34	7,941	(385)
May	3,670	5,303	177	9,150	2,230			2,230	5,900	5,303	177	11,380	4,929	5,302	107	10,338	1,042
June	4,701	-	275	4,976	1,888			1,888	6,589	-	275	6,864	5,173	-	344	5,517	1,347
July	4,900	-	238	5,138	1,814			1,814	6,714	-	238	6,952	7,428	-	386	7,814	(862)
August	4,216	-	246	4,462	1,848			1,848	6,064	-	246	6,310	6,342	-	231	6,573	(263)
September	4,576	5,275	188	10,039	1,756			1,756	6,332	5,275	188	11,795	6,379	5,253	165	11,797	(2)
October	3,467	-	352	3,819	1,809			1,809	5,276	-	352	5,628	6,107	-	403	6,510	(882)
November	3,569	1,386	126	5,081	2,378			2,378	5,947	1,386	126	7,459	5,990	1,391	130	7,511	(52)
December	6,493	-	13	6,506	2,040			2,040	8,533	-	13	8,546	7,173	-	22	7,195	1,351
2011																	
January	2,844	-	2	2,846	3,185			3,185	6,029	-	2	6,031	7,755	-	-	7,755	(1,724)
February	2,302	6,847	14	9,163	1,985			1,985	4,287	6,847	14	11,148	6,031	6,859	5	12,895	(1,747)
March	2,477	1,407	16	3,900	1,947			1,947	4,424	1,407	16	5,847	4,526	1,411	18	5,955	(108)
April	3,520	3,038	37	6,595	2,152			2,152	5,672	3,038	37	8,747	5,367	3,045	15	8,427	320
May	3,812	-	250	4,062	2,588			2,588	6,400	-	250	6,650	5,565	-	89	5,654	996
June	4,323	-	242	4,565	1,913			1,913	6,236	-	242	6,478	5,240	-	194	5,434	1,044
July	5,280	2,376	239	7,895	1,998			1,998	7,278	2,376	239	9,893	7,415	2,378	232	10,025	(132)
August	4,486	-	419	4,905	1,889			1,889	6,375	-	419	6,794	7,266	-	199	7,465	(671)
September	3,561	-	242	3,803	2,063			2,063	5,624	-	242	5,866	6,315	4,391	281	10,987	(5,121)
October	3,155	4,387	257	7,799	2,164			2,164	5,319	4,387	257	9,963	5,927	-	280	6,207	3,756
November	2,996	-	112	3,108	2,354			2,354	5,350	-	112	5,462	5,252	-	135	5,387	75
December	7,249	2,464	19	9,732	2,349			2,349	9,598	2,464	19	12,081	6,930	2,466	20	9,416	2,665
2012																	
January	3,043	-	-	3,043	3,018			3,018	6,061	-	-	6,061	8,296	-	-	8,296	(2,235)
February	2,241	1,220	4	3,465	1,913			1,913	4,154	1,220	4	5,378	5,637	1,365	3	7,005	(1,627)
March	2,629	865	15	3,509	1,927			1,927	4,556	865	15	5,436	4,866	816	10	5,692	(256)
April	3,022	3,063	44	6,129	1,847			1,847	4,869	3,063	44	7,976	5,044	2,999	46	8,089	(113)
May	3,497	-	302	3,799	2,486			2,486	5,983	-	302	6,285	5,310	-	83	5,393	892
June	4,892	-	182	5,074	1,836			1,836	6,728	-	182	6,910	4,764	-	249	5,013	1,897
July	5,789	-	235	6,024	1,880			1,880	7,669	-	235	7,904	7,677	-	194	7,871	33
August	4,286	-	254	4,540	1,986			1,986	6,272	-	254	6,526	6,966	-	269	7,235	(709)
September	4,156	-	351	4,507	1,966			1,966	6,122	-	351	6,473	5,939	-	313	6,252	221
October	3,909	1,817	315	6,041	1,725			1,725	5,634	1,817	315	7,766	6,566	1,815	334	8,715	(949)
November	4,052	618	86	4,756	2,459			2,459	6,511	618	86	7,215	5,914	618	193	6,725	490
December	5,941	374	28	6,343	2,127			2,127	8,068	374	28	8,470	7,119	374	26	7,519	951
2013																	
January	2,927	922	9	3,858	3,085			3,085	6,012	922	9	6,943	7,440	922	8	8,370	(1,427)
February	2,621	1,310	2	3,933	1,816			1,816	4,437	1,310	2	5,749	6,077	1,310	-	7,387	(1,638)
March	2,797	626	11	3,434	1,880			1,880	4,677	626	11	5,314	5,035	626	10	5,671	(357)
April	3,088	3,205	50	6,343	2,096			2,096	5,184	3,205	50	8,439	5,100	3,204	14	8,318	121
May	3,965	-	328	4,293	2,740			2,740	6,705	-	328	7,033	5,815	-	132	5,947	1,086
June	4,693	700	182	5,575	2,046			2,046	6,739	700	182	7,621	5,411	700	193	6,304	1,317
July	5,415	-	282	5,697	2,183			2,183	7,598	-	282	7,880	7,747	-	220	7,967	(87)
August	4,753	-	305	5,058	2,051			2,051	6,804	-	305	7,109	7,227	-	267	7,494	(385)
September	4,068	1,954	339	6,361	1,711			1,711	5,779	1,954	339	8,072	5,579	1,950	291	7,820	252
October	4,037	-	403	4,440	1,789			1,789	5,826	-	403	6,229	6,111	-	384	6,495	(266)
November	3,395	715	121	4,231	2,363			2,363	5,758	715	121	6,594	5,165	715	232	6,112	482
December	6,429	-	13	6,442	2,048			2,048	8,477	-	13	8,490	7,231	-	18	7,249	1,241

Table 2. Total Arrivals by Age, Type of Passangers and Gender December, 2013

Age Group	Type of Passangers								
	Total			Visitors			Returning Residents		
	Total	Male	Female	Total	Male	Female	Total	Male	Female
0-4	581	312	269	489	266	223	92	46	46
5-9	499	292	207	417	246	171	82	46	36
10-14	587	328	259	519	292	227	68	36	32
15-19	608	313	295	481	239	242	127	74	53
20-24	660	319	341	450	201	249	210	118	92
25-29	738	395	343	497	235	262	241	160	81
30-34	612	298	314	422	184	238	190	114	76
35-39	637	345	292	438	224	214	199	121	78
40-44	740	388	352	549	271	278	191	117	74
45-49	786	393	393	610	281	329	176	112	64
50-54	629	308	321	502	246	256	127	62	65
55-59	518	241	277	398	185	213	120	56	64
60-64	372	181	191	277	136	141	95	45	50
65-69	224	114	110	176	88	88	48	26	22
70-74	146	56	90	108	39	69	38	17	21
75+	140	58	82	96	37	59	44	21	23
Total	8,477	4,341	4,136	6,429	3,170	3,259	2,048	1,171	877
% Distribution	100.0	51.2	48.8	75.8	37.4	38.4	24.2	13.8	10.3

Table 3. Total Visitors by Usual Residence and Purpose of Visit December, 2013

Country of Usual Residence	Purpose of Visit						
	Total	% Distribution	Holiday/Vacation	Business/Conference	Visiting Relative/Friends	Other Reasons	Not Stated
Australia	1,699	26.4	347	59	824	112	357
New Zealand	3,562	55.4	556	79	1,667	191	1,069
Fiji	163	2.5	17	36	20	13	77
American Samoa	8	0.1	1	-	1	3	3
Western Samoa	21	0.3	-	3	9	1	8
Other Pacific Islands	54	0.8	15	4	21	5	9
Japan	40	0.6	14	5	1	1	19
China	62	1.0	9	14	12	9	18
India	4	0.1	-	-	-	1	3
Korea	4	0.1	-	-	2	-	2
Other Asian Countries	26	0.4	7	3	5	1	10
UK	30	0.5	16	6	5	2	1
Germany	32	0.5	16	-	6	3	7
France	20	0.3	5	3	12	-	-
Italy	3	0.0	1	-	2	-	-
Other European Countries	60	0.9	32	4	9	5	10
All African Countries	5	0.1	3	-	2	-	-
United States of America	611	9.5	93	42	237	56	183
Canada	7	0.1	2	1	3	-	1
Other American Countries	18	0.3	1	2	4	5	6
Total	6,429	100.0	1,135	261	2,842	408	1,783
% Distribution	100.0		17.7	4.1	44.2	6.3	27.7

Table 4: AIR DEPARTURES by Age Group, Passanger's Type for December, 2013

Age Group	Departing Residents	Percentage Distribution	Visitors	Percentage Distribution	Total	Percentage Distribution
0 - 4	182	5.0	250	6.9	432	6.0
5 - 9	279	7.7	166	4.6	445	6.2
10 - 14	304	8.4	195	5.4	499	6.9
15 - 19	440	12.1	217	6.0	657	9.1
20 - 24	331	9.1	290	8.0	621	8.6
25 - 29	325	9.0	285	7.9	610	8.4
30 - 34	283	7.8	276	7.7	559	7.7
35 - 39	252	6.9	255	7.1	507	7.0
40 - 44	251	6.9	297	8.2	548	7.6
45 - 49	237	6.5	338	9.4	575	8.0
50 - 54	186	5.1	296	8.2	482	6.7
55 - 59	171	4.7	281	7.8	452	6.3
60 - 64	141	3.9	178	4.9	319	4.4
65 - 69	106	2.9	138	3.8	244	3.4
70 - 74	76	2.1	81	2.2	157	2.2
75+	62	1.7	62	1.7	124	1.7
All Ages	3,626	100.0	3,605	100.0	7,231	100.0
YACHT	-	-	18	0	18	0
CRUISE SHIP	-	-	-	0	0	0
Total	3,626	100.0	3,623	100.0	7,249	100.0

Table 5. Total Departures by Country of Residence and Gender December, 2013

Country of Usual Residence	Male	Percent	Female	Percent	Total	Percent
	No.	Distribution	No.	Distribution		
Australia	383	11.1	462	12.2	845	11.7
New Zealand	809	23.5	974	25.7	1,783	24.7
Fiji	85	2.5	72	1.9	157	2.2
American Samoa	1	0.0	2	0.1	3	0.0
Western Samoa	3	0.1	6	0.2	9	0.1
Tonga	1,736	50.5	1,881	49.6	3,617	50.0
Other Pacific Islands	20	0.6	10	0.3	30	0.4
Japan	20	0.6	12	0.3	32	0.4
China	54	1.6	23	0.6	77	1.1
India	2	0.1	1	0.0	3	0.0
Korea	14	0.4	9	0.2	23	0.3
Other Asian Countries	17	0.5	13	0.3	30	0.4
UK	21	0.6	23	0.6	44	0.6
Germany	16	0.5	19	0.5	35	0.5
France	6	0.2	6	0.2	12	0.2
Italy	3	0.1	2	0.1	5	0.1
Other European Countries	30	0.9	34	0.9	64	0.9
All African Countries	1	0.0	2	0.1	3	0.0
United States of America	213	6.2	233	6.1	446	6.2
Canada	4	0.1	4	0.1	8	0.1
Other American Countries	2	0.1	3	0.1	5	0.1
Total	3,440	100.0	3,791	100.0	7,231	100.0

Table 1. Monthly Arrival and Departure by Mode of Travel and Net Migration, 2010 - 2013

Period	Visitors Arrivals				Returning Residents				Total Arrivals				Total Departures				Net Migration
	Air	Ship	Yacht	Total	Air	Ship	Yacht	Total	Air	Ship	Yacht	Total	Air	Ship	Yacht	Total	
2005	42,437	11,840	943	55,220	21,066			21,066	63,503	11,840	943	76,286	60,276	11,871	1,393	73,540	2,746
2006	46,268	10,809	868	57,945	20,707			20,707	66,975	10,809	868	78,652	68,637	13,049	582	82,268	(3,616)
2007	43,344	8,790	1,140	53,274	22,313			22,313	65,657	8,790	1,140	75,587	71,325	10,461	1,630	83,416	(7,829)
2008	50,462	14,599	1,828	66,889	24,239			24,239	74,701	14,599	1,828	91,128	76,704	14,602	1,584	92,890	(1,762)
2009	45,711	27,641	1,317	74,669	25,134			25,134	70,845	27,641	1,317	99,803	70,949	27,150	1,261	99,360	443
2010	47,081	16,265	1,659	65,005	24,501			24,501	71,582	16,265	1,659	89,506	72,533	16,244	1,830	90,607	(1,101)
2011	46,005	20,519	1,849	68,373	26,587			26,587	72,592	20,519	1,849	94,960	73,589	20,550	1,468	95,607	(647)
2012	47,457	7,957	1,816	57,230	25,170			25,170	72,627	7,957	1,816	82,400	74,098	7,987	1,720	83,805	(1,405)
2013	48,188	9,432	2,045	59,665	25,808			25,808	73,996	9,432	2,045	85,473	73,938	9,427	1,769	85,134	339
2010																	
January	3,158	646	4	3,808	3,019			3,019	6,177	646	4	6,827	7,822	642	-	8,464	(1,637)
February	2,379	-	5	2,384	2,083			2,083	4,462	-	5	4,467	5,096	-	1	5,097	(630)
March	3,134	853	5	3,992	1,730			1,730	4,864	853	5	5,722	4,993	850	7	5,850	(128)
April	2,818	2,802	30	5,650	1,906			1,906	4,724	2,802	30	7,556	5,101	2,806	34	7,941	(385)
May	3,670	5,303	177	9,150	2,230			2,230	5,900	5,303	177	11,380	4,929	5,302	107	10,338	1,042
June	4,701	-	275	4,976	1,888			1,888	6,589	-	275	6,864	5,173	-	344	5,517	1,347
July	4,900	-	238	5,138	1,814			1,814	6,714	-	238	6,952	7,428	-	386	7,814	(862)
August	4,216	-	246	4,462	1,848			1,848	6,064	-	246	6,310	6,342	-	231	6,573	(263)
September	4,576	5,275	188	10,039	1,756			1,756	6,332	5,275	188	11,795	6,379	5,253	165	11,797	(2)
October	3,467	-	352	3,819	1,809			1,809	5,276	-	352	5,628	6,107	-	403	6,510	(882)
November	3,569	1,386	126	5,081	2,378			2,378	5,947	1,386	126	7,459	5,990	1,391	130	7,511	(52)
December	6,493	-	13	6,506	2,040			2,040	8,533	-	13	8,546	7,173	-	22	7,195	1,351
2011																	
January	2,844		2	2,846	3,185			3,185	6,029	-	2	6,031	7,755	-	-	7,755	(1,724)
February	2,302	6,847	14	9,163	1,985			1,985	4,287	6,847	14	11,148	6,031	6,859	5	12,895	(1,747)
March	2,477	1,407	16	3,900	1,947			1,947	4,424	1,407	16	5,847	4,526	1,411	18	5,955	(108)
April	3,520	3,038	37	6,595	2,152			2,152	5,672	3,038	37	8,747	5,367	3,045	15	8,427	320
May	3,812	-	250	4,062	2,588			2,588	6,400	-	250	6,650	5,565	-	89	5,654	996
June	4,323	-	242	4,565	1,913			1,913	6,236	-	242	6,478	5,240	-	194	5,434	1,044
July	5,280	2,376	239	7,895	1,998			1,998	7,278	2,376	239	9,893	7,415	2,378	232	10,025	(132)
August	4,486	-	419	4,905	1,889			1,889	6,375	-	419	6,794	7,266	-	199	7,465	(671)
September	3,561	-	242	3,803	2,063			2,063	5,624	-	242	5,866	6,315	4,391	281	10,987	(5,121)
October	3,155	4,387	257	7,799	2,164			2,164	5,319	4,387	257	9,963	5,927	-	280	6,207	3,756
November	2,996	-	112	3,108	2,354			2,354	5,350	-	112	5,462	5,252	-	135	5,387	75
December	7,249	2,464	19	9,732	2,349			2,349	9,598	2,464	19	12,081	6,930	2,466	20	9,416	2,665
2012																	
January	3,043	-	-	3,043	3,018			3,018	6,061	-	-	6,061	8,296	-	-	8,296	(2,235)
February	2,241	1,220	4	3,465	1,913			1,913	4,154	1,220	4	5,378	5,637	1,365	3	7,005	(1,627)
March	2,629	865	15	3,509	1,927			1,927	4,556	865	15	5,436	4,866	816	10	5,692	(256)
April	3,022	3,063	44	6,129	1,847			1,847	4,869	3,063	44	7,976	5,044	2,999	46	8,089	(113)
May	3,497	-	302	3,799	2,486			2,486	5,983	-	302	6,285	5,310	-	83	5,393	892
June	4,892	-	182	5,074	1,836			1,836	6,728	-	182	6,910	4,764	-	249	5,013	1,897
July	5,789	-	235	6,024	1,880			1,880	7,669	-	235	7,904	7,677	-	194	7,871	33
August	4,286	-	254	4,540	1,986			1,986	6,272	-	254	6,526	6,966	-	269	7,235	(709)
September	4,156	-	351	4,507	1,966			1,966	6,122	-	351	6,473	5,939	-	313	6,252	221
October	3,909	1,817	315	6,041	1,725			1,725	5,634	1,817	315	7,766	6,566	1,815	334	8,715	(949)
November	4,052	618	86	4,756	2,459			2,459	6,511	618	86	7,215	5,914	618	193	6,725	490
December	5,941	374	28	6,343	2,127			2,127	8,068	374	28	8,470	7,119	374	26	7,519	951
2013																	
January	2,927	922	9	3,858	3,085			3,085	6,012	922	9	6,943	7,440	922	8	8,370	(1,427)
February	2,621	1,310	2	3,933	1,816			1,816	4,437	1,310	2	5,749	6,077	1,310	-	7,387	(1,638)
March	2,797	626	11	3,434	1,880			1,880	4,677	626	11	5,314	5,035	626	10	5,671	(357)
April	3,088	3,205	50	6,343	2,096			2,096	5,184	3,205	50	8,439	5,100	3,204	14	8,318	121
May	3,965	-	328	4,293	2,740			2,740	6,705	-	328	7,033	5,815	-	132	5,947	1,086
June	4,693	700	182	5,575	2,046			2,046	6,739	700	182	7,621	5,411	700	193	6,304	1,317
July	5,415	-	282	5,697	2,183			2,183	7,598	-	282	7,880	7,747	-	220	7,967	(87)
August	4,753	-	305	5,058	2,051			2,051	6,804	-	305	7,109	7,227	-	267	7,494	(385)
September	4,068	1,954	339	6,361	1,711			1,711	5,779	1,954	339	8,072	5,579	1,950	291	7,820	252
October	4,037	-	403	4,440	1,789			1,789	5,826	-	403	6,229	6,111	-	384	6,495	(266)
November	3,395	715	121	4,231	2,363			2,363	5,758	715	121	6,594	5,165	715	232	6,112	482
December	6,429	-	13	6,442	2,048			2,048	8,477	-	13	8,490	7,231	-	18	7,249	1,241