



Government of Tonga

INTERNATIONAL ARRIVALS AND DEPARTURES November 2013

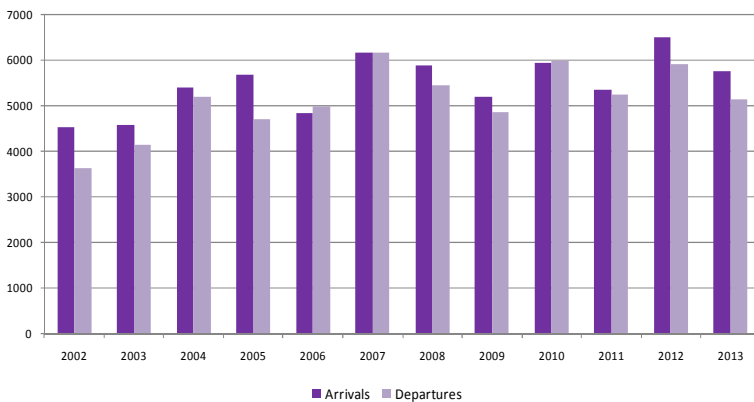
SD38M-07

Statistical Bulletin

Month of	Number	Change from previous month	Change from previous year
November 2013			
All Arrivals	6,594	5.9	-8.6
Air Visitors	3,395	-15.9	-16.2
Air Returning Residents	2,363	32.1	-3.9
Cruise Ships	715	0.0	15.7
Yachts	121	-70.0	40.7
All Departures	6,112	-5.9	-9.1

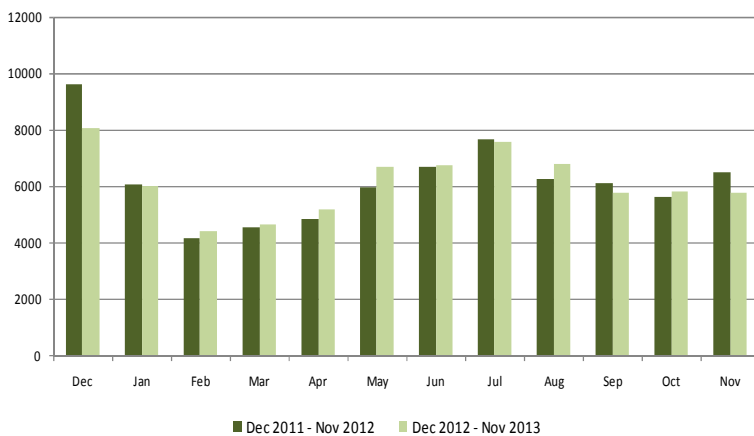
- An increase of 5.9% of all arrivals (6,594) compared to the previous month of October 2013 (6,229)
- A decline of 15.9% of all air visitors (3,395) compared to October 2013 (4,037)
- An increase of 32.1% (2,363) of returning residents compared to previous month (1,789)
- There were 715 passengers arrived by cruise ship, for the month of November.
- A decline of 70.0% of yacht arrivals compared to the previous month
- A decline of 5.9% of all departures from October 2013

Fig. 1: November Air Arrivals and Departures 2002 - 2013



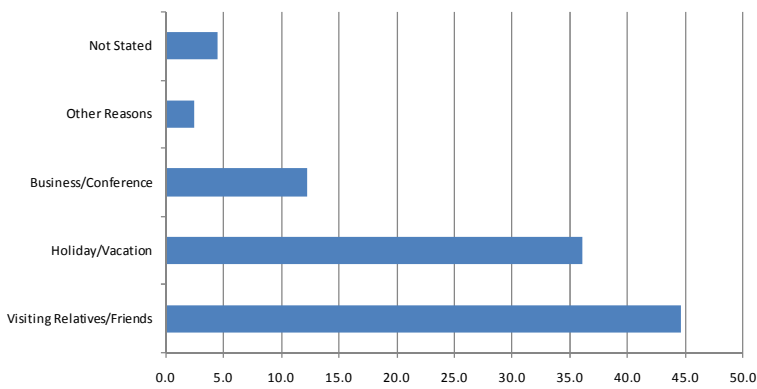
- Total air arrivals in November 2013 were 5,758 a decline of 11.6% compared to November 2012(6,511).
- Total air departures of 5,165 in November 2013, a decline of 12.7% compared to November 2012 (5,914)

Fig. 2: Monthly Air Arrivals vs the corresponding month of the previous year



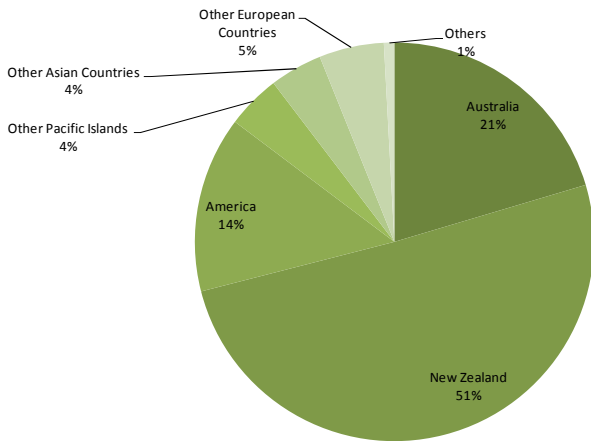
- Total air visitor arrivals in November 2013 were 3,395 a decline of 16.2% compared to November 2012 (4,052)

Fig. 3: Air Visitors by Purpose of Visit November, 2013



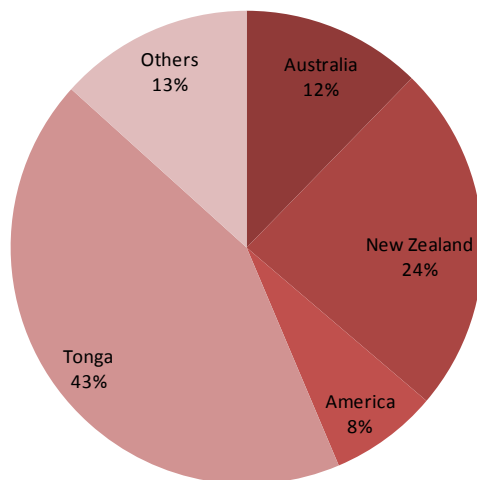
- Visiting Relatives/Friends made up 44.6% (1,515) of all air visitors to the Kingdom in the month of November.
- 36.1% (1,227) of the total visitors were here on Holiday/Vacation.
- Visitors who were here on Business or Conference made up 12.3% (418) and those with other reasons were 2.5% (83). 4.5% (152) didn't state the reasons of their visit.

Fig. 4: Air Visitors by Country of Usual Residence November, 2013



- New Zealand remains as the leading country in visitors arrivals by country of usual residence, accounting for 50.6% (1,718) of total air visitors
- This was followed by Australia with 20.4% (692), and USA 14.3% (485)

Fig. 5: Air Departures by Country of Usual Residence November, 2013



- Most of the persons departing in the month of November were persons residing in the Kingdom of Tonga (2,224) followed by New Zealand (1,238) and Australia (633)

Background Information

Data is extracted from the arrival and departure cards of the Immigration Department, Ministry of Foreign Affairs and Customs vessel & yacht log book. The Statistics Department reconciles the figures from the Air Terminal Services Manifest, Tonga Airport Limited and Ports Authority Manifest to produce final published data.

Statistics on Overseas Arrivals and Departures related to the number of movements of travelers rather than the number of travelers (i.e. the multiple movements of individual persons during a given reference period are all counted).

Definitions

- ▶ **A Visitor** is a person other than a Tongan citizen, permit holder and exempted person, who usually stay at least 24 hours in the Kingdom, or who stays overnight in accommodation within Tonga. This refers to passengers arriving by air and yacht only.
- ▶ **Cruise Ship Passengers** are defined as those who arrive and depart in the same vessel which is on a cruise trip, and use that vessel's accommodation during their stay in Tonga. They are also known as "Excursionist"
- ▶ **A Returning resident** is a person who has the Kingdom of Tonga as their permanent address for more than six months of the year and returns to Tonga after a trip overseas. Tongan residence is self-defined as reported by travelers when completing the Passenger Arrival Card.
- ▶ **Mode of Transport** Only air, yacht and cruise ships passengers are included. Passenger/crew on cargo, navy or special vessels are excluded.

The Statistics Department wishes to acknowledge the cooperation of the Immigration Department of the Ministry of Foreign Affairs and Trade and the Custom Department of the Ministry of Revenue Services, Air Terminal Services, Ports Authority making it possible to publish these important statistics.

Table 1. Monthly Arrival and Departure by Mode of Travel and Net Migration, 2010 - 2013

Period	Visitors Arrivals				Returning Residents				Total Arrivals				Total Departures				Net Migration
	Air	Ship	Yacht	Total	Air	Ship	Yacht	Total	Air	Ship	Yacht	Total	Air	Ship	Yacht	Total	
2005	42,437	11,840	943	55,220	21,066			21,066	63,503	11,840	943	76,286	60,276	11,871	1,393	73,540	2,746
2006	46,268	10,809	868	57,945	20,707			20,707	66,975	10,809	868	78,652	68,637	13,049	582	82,268	(3,616)
2007	43,344	8,790	1,140	53,274	22,313			22,313	65,657	8,790	1,140	75,587	71,325	10,461	1,630	83,416	(7,829)
2008	50,462	14,599	1,828	66,889	24,239			24,239	74,701	14,599	1,828	91,128	76,704	14,602	1,584	92,890	(1,762)
2009	45,711	27,641	1,317	74,669	25,134			25,134	70,845	27,641	1,317	99,803	70,949	27,150	1,261	99,360	443
2010	47,081	16,265	1,659	65,005	24,501			24,501	71,582	16,265	1,659	89,506	72,533	16,244	1,830	90,607	(1,101)
2011	46,005	20,519	989	67,513	26,587			26,587	72,592	20,519	989	94,100	67,976	22,939	1,259	92,174	1,926
2012	47,352	7,957	1,816	57,125	25,107			25,107	72,459	7,957	1,816	82,232	73,824	7,987	1,720	83,531	(1,299)
2010																	
January	3,158	646	4	3,808	3,019			3,019	6,177	646	4	6,827	7,822	642	-	8,464	(1,637)
February	2,379	-	5	2,384	2,083			2,083	4,462	-	5	4,467	5,096	-	1	5,097	(630)
March	3,134	853	5	3,992	1,730			1,730	4,864	853	5	5,722	4,993	850	7	5,850	(128)
April	2,818	2,802	30	5,650	1,906			1,906	4,724	2,802	30	7,556	5,101	2,806	34	7,941	(385)
May	3,670	5,303	177	9,150	2,230			2,230	5,900	5,303	177	11,380	4,929	5,302	107	10,338	1,042
June	4,701	-	275	4,976	1,888			1,888	6,589	-	275	6,864	5,173	-	344	5,517	1,347
July	4,900	-	238	5,138	1,814			1,814	6,714	-	238	6,952	7,428	-	386	7,814	(862)
August	4,216	-	246	4,462	1,848			1,848	6,064	-	246	6,310	6,342	-	231	6,573	(263)
September	4,576	5,275	188	10,039	1,756			1,756	6,332	5,275	188	11,795	6,379	5,253	165	11,797	(2)
October	3,467	-	352	3,819	1,809			1,809	5,276	-	352	5,628	6,107	-	403	6,510	(882)
November	3,569	1,386	126	5,081	2,378			2,378	5,947	1,386	126	7,459	5,990	1,391	130	7,511	(52)
December	6,493	-	13	6,506	2,040			2,040	8,533	-	13	8,546	7,173	-	22	7,195	1,351
2011																	
January	2,844		2	2,846	3,185			3,185	6,029	-	2	6,031	7,755	-	-	7,755	(1,724)
February	2,302	6,847	14	9,163	1,985			1,985	4,287	6,847	14	11,148	6,031	6,859	5	12,895	(1,747)
March	2,477	1,407	16	3,900	1,947			1,947	4,424	1,407	16	5,847	4,526	1,411	18	5,955	(108)
April	3,520	3,038	37	6,595	2,152			2,152	5,672	3,038	37	8,747	5,367	3,045	15	8,427	320
May	3,812	-	250	4,062	2,588			2,588	6,400	-	250	6,650	5,565	-	89	5,654	996
June	4,323	-	242	4,565	1,913			1,913	6,236	-	242	6,478	5,240	-	194	5,434	1,044
July	5,280	2,376	239	7,895	1,998			1,998	7,278	2,376	239	9,893	7,415	2,378	232	10,025	(132)
August	4,486	-	419	4,905	1,889			1,889	6,375	-	419	6,794	7,266	-	199	7,465	(671)
September	3,561	-	242	3,803	2,063			2,063	5,624	-	242	5,866	6,315	4,391	281	10,987	(5,121)
October	3,155	4,387	257	7,799	2,164			2,164	5,319	4,387	257	9,963	5,927	-	280	6,207	3,756
November	2,996	-	112	3,108	2,354			2,354	5,350	-	112	5,462	5,252	-	135	5,387	75
December	7,249	2,464	19	9,732	2,349			2,349	9,598	2,464	19	12,081	6,930	2,466	20	9,416	2,665
2012																	
January	3,043	-	-	3,043	3,018			3,018	6,061	-	-	6,061	8,296	-	-	8,296	(2,235)
February	2,241	1,220	4	3,465	1,913			1,913	4,154	1,220	4	5,378	5,637	1,365	3	7,005	(1,627)
March	2,629	865	15	3,509	1,927			1,927	4,556	865	15	5,436	4,866	816	10	5,692	(256)
April	3,022	3,063	44	6,129	1,847			1,847	4,869	3,063	44	7,976	5,044	2,999	46	8,089	(113)
May	3,497	-	302	3,799	2,486			2,486	5,983	-	302	6,285	5,310	-	83	5,393	892
June	4,892	-	182	5,074	1,836			1,836	6,728	-	182	6,910	4,764	-	249	5,013	1,897
July	5,789	-	235	6,024	1,880			1,880	7,669	-	235	7,904	7,677	-	194	7,871	33
August	4,286	-	254	4,540	1,986			1,986	6,272	-	254	6,526	6,966	-	269	7,235	(709)
September	4,156	-	351	4,507	1,966			1,966	6,122	-	351	6,473	5,939	-	313	6,252	221
October	3,909	1,817	315	6,041	1,725			1,725	5,634	1,817	315	7,766	6,566	1,815	334	8,715	(949)
November	4,052	618	86	4,756	2,459			2,459	6,511	618	86	7,215	5,914	618	193	6,725	490
December	5,941	374	28	6,343	2,127			2,127	8,068	374	28	8,470	7,119	374	26	7,519	951
2013																	
January	2,927	922	9	3,858	3,085			3,085	6,012	922	9	6,943	7,440	922	8	8,370	(1,427)
February	2,621	1,310	2	3,933	1,816			1,816	4,437	1,310	2	5,749	6,077	1,310	-	7,387	(1,638)
March	2,797	626	11	3,434	1,880			1,880	4,677	626	11	5,314	5,035	626	10	5,671	(357)
April	3,088	3,205	50	6,343	2,096			2,096	5,184	3,205	50	8,439	5,100	3,204	14	8,318	121
May	3,965	-	328	4,293	2,740			2,740	6,705	-	328	7,033	5,815	-	132	5,947	1,086
June	4,693	700	182	5,575	2,046			2,046	6,739	700	182	7,621	5,411	700	193	6,304	1,317
July	5,415	-	282	5,697	2,183			2,183	7,598	-	282	7,880	7,747	-	220	7,967	(87)
August	4,753	-	305	5,058	2,051			2,051	6,804	-	305	7,109	7,227	-	267	7,494	(385)
September	4,068	1,954	339	6,361	1,711			1,711	5,779	1,954	339	8,072	5,579	1,950	291	7,820	252
October	4,037	-	403	4,440	1,789			1,789	5,826	-	403	6,229	6,111	-	384	6,495	(266)
November	3,395	715	121	4,231	2,363			2,363	5,758	715	121	6,594	5,165	715	232	6,112	482

Table 2. Total Arrivals by Age, Type of Passangers and Gender November, 2013

Age Group	Type of Passangers								
	Total			Visitors			Returning Residents		
	Total	Male	Female	Total	Male	Female	Total	Male	Female
0-4	277	152	125	191	109	82	86	43	43
5-9	185	103	82	122	73	49	63	30	33
10-14	201	108	93	158	88	70	43	20	23
15-19	297	135	162	175	82	93	122	53	69
20-24	501	277	224	232	123	109	269	154	115
25-29	544	309	235	273	128	145	271	181	90
30-34	490	259	231	266	127	139	224	132	92
35-39	466	261	205	271	133	138	195	128	67
40-44	508	294	214	297	171	126	211	123	88
45-49	553	306	247	325	164	161	228	142	86
50-54	464	257	207	286	155	131	178	102	76
55-59	416	221	195	268	145	123	148	76	72
60-64	320	172	148	191	112	79	129	60	69
65-69	248	136	112	164	89	75	84	47	37
70-74	134	69	65	83	47	36	51	22	29
75+	154	89	65	93	56	37	61	33	28
Total	5,758	3,148	2,610	3,395	1,802	1,593	2,363	1,346	1,017
% Distribution	143.5	78.4	65.0	84.6	44.9	39.7	58.9	33.5	25.3

Table 3. Total Visitors by Usual Residence and Purpose of Visit November, 2013

Country of Usual Residence	Purpose of Visit						
	Total	% Distribution	Holiday/ Vacation	Business/ Conference	Visiting Relative/ Friends	Other Reasons	Not Stated
Australia	692	20.4	257	89	317	16	13
New Zealand	1,718	50.6	609	154	831	34	90
Fiji	91	2.7	17	32	27	6	9
American Samoa	-	-	-	-	-	-	-
Western Samoa	17	0.5	-	13	4	-	-
Other Pacific Islands	40	1.2	6	22	11	-	1
Japan	32	0.9	13	7	6	-	6
China	42	1.2	7	10	16	3	6
India	5	0.1	1	-	3	1	-
Korea	27	0.8	26	-	-	-	1
Other Asian Countries	39	1.1	20	8	11	-	-
UK	33	1.0	20	6	6	1	-
Germany	40	1.2	24	3	3	-	10
France	22	0.6	7	14	1	-	-
Italy	10	0.3	3	3	4	-	-
Other European Countries	73	2.2	67	3	-	-	3
All African Countries	1	0.0	1	-	-	-	-
United States of America	485	14.3	136	49	268	22	10
Canada	14	0.4	10	1	3	-	-
Other American Countries	14	0.4	3	4	4	-	3
Total	3,395	100.0	1,227	418	1,515	83	152
% Distribution	100.0		36.1	12.3	44.6	2.4	4.5

Table 4: AIR DEPARTURES by Age Group, Passanger's Type for November, 2013

Age Group	Departing Residents	Percentage Distribution	Visitors	Percentage Distribution	Total	Percentage Distribution
0 - 4	82	3.7	160	5.4	242	4.7
5 - 9	78	3.5	105	3.6	183	3.5
10 - 14	111	5.0	85	2.9	196	3.8
15 - 19	163	7.3	79	2.7	242	4.7
20 - 24	266	12.0	229	7.8	495	9.6
25 - 29	239	10.7	227	7.7	466	9.0
30 - 34	208	9.4	258	8.8	466	9.0
35 - 39	195	8.8	231	7.9	426	8.2
40 - 44	217	9.8	288	9.8	505	9.8
45 - 49	180	8.1	288	9.8	468	9.1
50 - 54	123	5.5	301	10.2	424	8.2
55 - 59	112	5.0	260	8.8	372	7.2
60 - 64	92	4.1	193	6.6	285	5.5
65 - 69	67	3.0	132	4.5	199	3.9
70 - 74	46	2.1	63	2.1	109	2.1
75+	45	2.0	42	1.4	87	1.7
All Ages	2,224	100.0	2,941	100.0	5,165	100.0
YACHT	-	-	232	0	232	0
CRUISE SHIP	-	-	715	0	715	0
Total	2,224	100.0	3,888	100.0	6,112	100.0

Table 5. Total Departures by Country of Residence and Gender November, 2013

Country of Usual Residence	Male	Percent	Female	Percent	Total	Percent
	No.	Distribution	No.	Distribution		Distribution
Australia	334	11.6	299	13.1	633	12.3
New Zealand	640	22.2	598	26.2	1,238	24.0
Fiji	68	2.4	35	1.5	103	2.0
American Samoa	3	0.1	3	0.1	6	0.1
Western Samoa	14	0.5	7	0.3	21	0.4
Tonga	1,310	45.5	914	40.0	2,224	43.1
Other Pacific Islands	22	0.8	28	1.2	50	1.0
Japan	21	0.7	15	0.7	36	0.7
China	28	1.0	3	0.1	31	0.6
India	-	-	-	-	-	-
Korea	17	0.6	1	0.0	18	0.3
Other Asian Countries	22	0.8	8	0.4	30	0.6
UK	36	1.2	32	1.4	68	1.3
Germany	28	1.0	27	1.2	55	1.1
France	25	0.9	17	0.7	42	0.8
Italy	11	0.4	5	0.2	16	0.3
Other European Countries	88	3.1	63	2.8	151	2.9
All African Countries	-	-	1	0.0	1	0.0
United States of America	191	6.6	191	8.4	382	7.4
Canada	19	0.7	26	1.1	45	0.9
Other American Countries	4	0.1	11	0.5	15	0.3
Total	2,881	100.0	2,284	100.0	5,165	100.0