



Government of Tonga

INTERNATIONAL ARRIVALS AND DEPARTURES September 2013

SD38M-07

Statistical Bulletin

Month of September 2013	Number	Change from previous month	Change from previous year
All Arrivals	8,072	13.5	24.7
Air Visitors	4,068	-14.4	-2.1
Air Returning Residents	1,711	-16.6	-13.0
Cruise Ships	1,954	0.0	0.0
Yachts	339	11.1	-3.4
All Departures	7,820	4.4	25.1

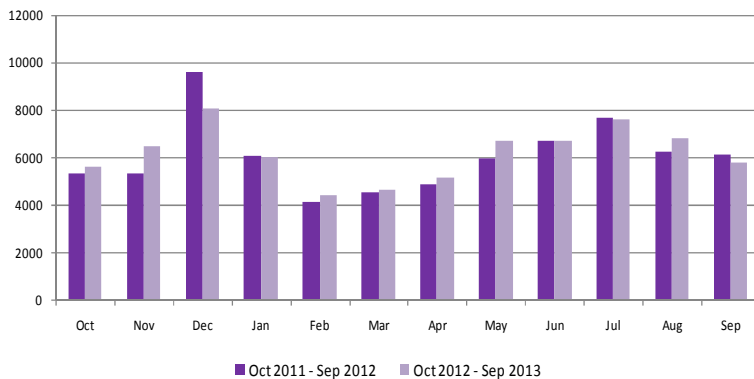
- An increase of 13.5% of all arrivals (8,072) compared to the previous month of August 2013 (7,109)
- A decline of 14.4% of all air visitors (4,068) compared to August 2013 (4,753)
- A decline of 16.6% (1,711) of returning residents compared to previous month (2,051)
- There were 1,954 passengers arrived by cruise ship for the month of September.
- An increase of 11.1% of yacht arrivals compared to the previous month
- An increase of 4.4% of all departures from August 2013

Fig. 1: September Air Arrivals and Departures 2002 - 2013



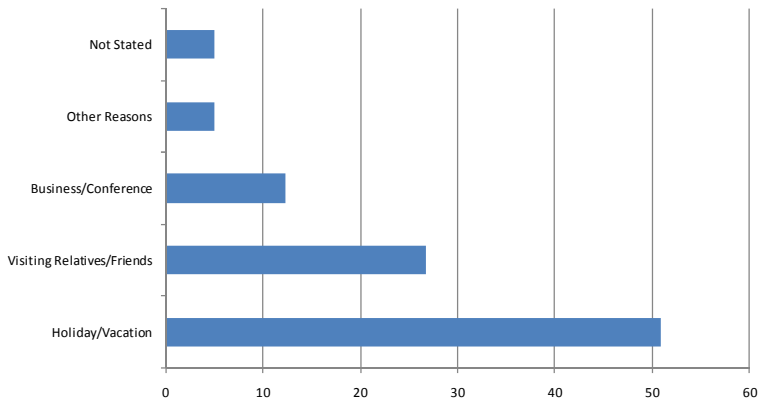
- Total air arrivals in September 2013 were 5,779 a decline of 5.6% compared to September 2012(6,122).
- Total air departures of 5,579 in September 2013, a decline of 6.1% compared to September 2012 (5,939)

Fig. 2: Monthly Air Arrivals vs the corresponding month of the previous year



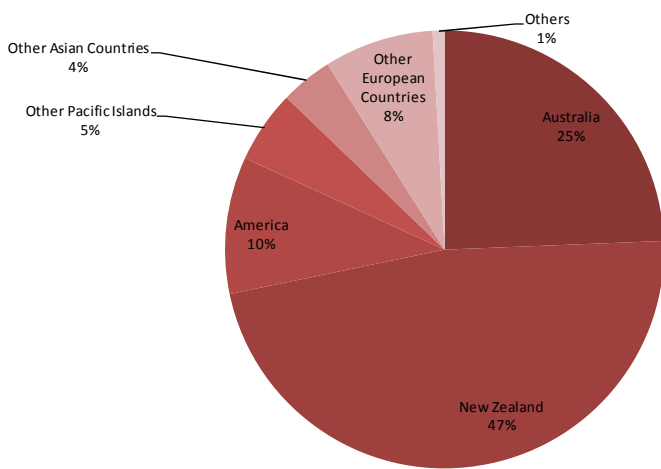
- Total air visitor arrivals in September 2013 were 4,068 a decline of 2.1% compared to September 2012 (4,156)

Fig. 3: Air Visitors by Purpose of Visit September, 2013



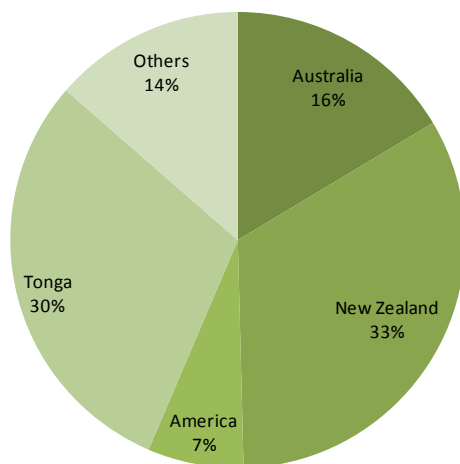
- Holiday/Vacation made up 50.9% (2,070) of all air visitors to the Kingdom in the month of September.
- 26.7% (1,088) of the total visitors were here to visit Relatives/friends
- Visitors who were here on Business or Conference made up 12.3% (502) and those with other reasons were 5.0% (205)

Fig. 4: Air Visitors by Country of Usual Residence September, 2013



- New Zealand remains as the leading country in visitors arrivals by country of usual residence, accounting for 47.4% (1,927) of total air visitors
- This was followed by Australia with 24.4 % (991), and USA 10.1% (410)

Fig. 5: Air Departures by Country of Usual Residence September, 2013



- Most of the persons departing in the month of September were persons residing in New Zealand (1,854) followed by Tonga (1,674) and Australia (916)

Background Information

Data is extracted from the arrival and departure cards of the Immigration Department, Ministry of Foreign Affairs and Customs vessel & yacht log book. The Statistics Department reconciles the figures from the Air Terminal Services Manifest, Tonga Airport Limited and Ports Authority Manifest to produce final published data.

Statistics on Overseas Arrivals and Departures related to the number of movements of travelers rather than the number of travelers (i.e. the multiple movements of individual persons during a given reference period are all counted).

Definitions

- ▶ **A Visitor** is a person other than a Tongan citizen, permit holder and exempted person, who usually stay at least 24 hours in the Kingdom, or who stays overnight in accommodation within Tonga. This refers to passengers arriving by air and yacht only.
- ▶ **Cruise Ship Passengers** are defined as those who arrive and depart in the same vessel which is on a cruise trip, and use that vessel's accommodation during their stay in Tonga. They are also known as "Excursionist"
- ▶ **A Returning resident** is a person who has the Kingdom of Tonga as their permanent address for more than six months of the year and returns to Tonga after a trip overseas. Tongan residence is self-defined as reported by travelers when completing the Passenger Arrival Card.
- ▶ **Mode of Transport** Only air, yacht and cruise ships passengers are included. Passenger/crew on cargo, navy or special vessels are excluded.

The Statistics Department wishes to acknowledge the cooperation of the Immigration Department of the Ministry of Foreign Affairs and Trade and the Custom Department of the Ministry of Revenue Services, Air Terminal Services, Ports Authority making it possible to publish these important statistics.

Table 1. Monthly Arrival and Departure by Mode of Travel and Net Migration, 2010 - 2013

Period	Visitors Arrivals				Returning Residents				Total Arrivals				Total Departures				Net Migration
	Air	Ship	Yacht	Total	Air	Ship	Yacht	Total	Air	Ship	Yacht	Total	Air	Ship	Yacht	Total	
2005	42,437	11,840	943	55,220	21,066			21,066	63,503	11,840	943	76,286	60,276	11,871	1,393	73,540	2,746
2006	46,268	10,809	868	57,945	20,707			20,707	66,975	10,809	868	78,652	68,637	13,049	582	82,268	(3,616)
2007	43,344	8,790	1,140	53,274	22,313			22,313	65,657	8,790	1,140	75,587	71,325	10,461	1,630	83,416	(7,829)
2008	50,462	14,599	1,828	66,889	24,239			24,239	74,701	14,599	1,828	91,128	76,704	14,602	1,584	92,890	(1,762)
2009	45,711	27,641	1,317	74,669	25,134			25,134	70,845	27,641	1,317	99,803	70,949	27,150	1,261	99,360	443
2010	47,081	16,265	1,659	65,005	24,501			24,501	71,582	16,265	1,659	89,506	72,533	16,244	1,830	90,607	(1,101)
2011	46,005	20,519	989	67,513	26,587			26,587	72,592	20,519	989	94,100	67,976	22,939	1,259	92,174	1,926
2012	47,352	7,957	1,816	57,125	25,107			25,107	72,459	7,957	1,816	82,232	73,824	7,987	1,720	83,531	(1,299)
2010																	
January	3,158	646	4	3,808	3,019			3,019	6,177	646	4	6,827	7,822	642	-	8,464	(1,637)
February	2,379	-	5	2,384	2,083			2,083	4,462	-	5	4,467	5,096	-	1	5,097	(630)
March	3,134	853	5	3,992	1,730			1,730	4,864	853	5	5,722	4,993	850	7	5,850	(128)
April	2,818	2,802	30	5,650	1,906			1,906	4,724	2,802	30	7,556	5,101	2,806	34	7,941	(385)
May	3,670	5,303	177	9,150	2,230			2,230	5,900	5,303	177	11,380	4,929	5,302	107	10,338	1,042
June	4,701	-	275	4,976	1,888			1,888	6,589	-	275	6,864	5,173	-	344	5,517	1,347
July	4,900	-	238	5,138	1,814			1,814	6,714	-	238	6,952	7,428	-	386	7,814	(862)
August	4,216	-	246	4,462	1,848			1,848	6,064	-	246	6,310	6,342	-	231	6,573	(263)
September	4,576	5,275	188	10,039	1,756			1,756	6,332	5,275	188	11,795	6,379	5,253	165	11,797	(2)
October	3,467	-	352	3,819	1,809			1,809	5,276	-	352	5,628	6,107	-	403	6,510	(882)
November	3,569	1,386	126	5,081	2,378			2,378	5,947	1,386	126	7,459	5,990	1,391	130	7,511	(52)
December	6,493	-	13	6,506	2,040			2,040	8,533	-	13	8,546	7,173	-	22	7,195	1,351
2011																	
January	2,844		2	2,846	3,185			3,185	6,029	-	2	6,031	7,755	-	-	7,755	(1,724)
February	2,302	6,847	14	9,163	1,985			1,985	4,287	6,847	14	11,148	6,031	6,859	5	12,895	(1,747)
March	2,477	1,407	16	3,900	1,947			1,947	4,424	1,407	16	5,847	4,526	1,411	18	5,955	(108)
April	3,520	3,038	37	6,595	2,152			2,152	5,672	3,038	37	8,747	5,367	3,045	15	8,427	320
May	3,812	-	250	4,062	2,588			2,588	6,400	-	250	6,650	5,565	-	89	5,654	996
June	4,323	-	242	4,565	1,913			1,913	6,236	-	242	6,478	5,240	-	194	5,434	1,044
July	5,280	2,376	239	7,895	1,998			1,998	7,278	2,376	239	9,893	7,415	2,378	232	10,025	(132)
August	4,486	-	419	4,905	1,889			1,889	6,375	-	419	6,794	7,266	-	199	7,465	(671)
September	3,561	-	242	3,803	2,063			2,063	5,624	-	242	5,866	6,315	4,391	281	10,987	(5,121)
October	3,155	4,387	257	7,799	2,164			2,164	5,319	4,387	257	9,963	5,927	-	280	6,207	3,756
November	2,996	-	112	3,108	2,354			2,354	5,350	-	112	5,462	5,252	-	135	5,387	75
December	7,249	2,464	19	9,732	2,349			2,349	9,598	2,464	19	12,081	6,930	2,466	20	9,416	2,665
2012																	
January	3,043	-	-	3,043	3,018			3,018	6,061	-	-	6,061	8,296	-	-	8,296	(2,235)
February	2,241	1,220	4	3,465	1,913			1,913	4,154	1,220	4	5,378	5,637	1,365	3	7,005	(1,627)
March	2,629	865	15	3,509	1,927			1,927	4,556	865	15	5,436	4,866	816	10	5,692	(256)
April	3,022	3,063	44	6,129	1,847			1,847	4,869	3,063	44	7,976	5,044	2,999	46	8,089	(113)
May	3,497	-	302	3,799	2,486			2,486	5,983	-	302	6,285	5,310	-	83	5,393	892
June	4,892	-	182	5,074	1,836			1,836	6,728	-	182	6,910	4,764	-	249	5,013	1,897
July	5,789	-	235	6,024	1,880			1,880	7,669	-	235	7,904	7,677	-	194	7,871	33
August	4,286	-	254	4,540	1,986			1,986	6,272	-	254	6,526	6,966	-	269	7,235	(709)
September	4,156	-	351	4,507	1,966			1,966	6,122	-	351	6,473	5,939	-	313	6,252	221
October	3,909	1,817	315	6,041	1,725			1,725	5,634	1,817	315	7,766	6,566	1,815	334	8,715	(949)
November	4,052	618	86	4,756	2,459			2,459	6,511	618	86	7,215	5,914	618	193	6,725	490
December	5,941	374	28	6,343	2,127			2,127	8,068	374	28	8,470	7,119	374	26	7,519	951
2013																	
January	2,927	922	9	3,858	3,085			3,085	6,012	922	9	6,943	7,440	922	8	8,370	(1,427)
February	2,621	1,310	2	3,933	1,816			1,816	4,437	1,310	2	5,749	6,077	1,310	-	7,387	(1,638)
March	2,797	626	11	3,434	1,880			1,880	4,677	626	11	5,314	5,035	626	10	5,671	(357)
April	3,088	3,205	50	6,343	2,096			2,096	5,184	3,205	50	8,439	5,100	3,204	14	8,318	121
May	3,965	-	328	4,293	2,740			2,740	6,705	-	328	7,033	5,815	-	132	5,947	1,086
June	4,693	700	182	5,575	2,046			2,046	6,739	700	182	7,621	5,411	700	193	6,304	1,317
July	5,415	-	282	5,697	2,183			2,183	7,598	-	282	7,880	7,747	-	220	7,967	(87)
August	4,753	-	305	5,058	2,051			2,051	6,804	-	305	7,109	7,227	-	267	7,494	(385)
September	4,068	1,954	339	6,361	1,711			1,711	5,779	1,954	339	8,072	5,579	1,950	291	7,820	252

Table 2. Total Arrivals by Age, Type of Passangers and Gender September, 2013

Age Group	Type of Passangers								
	Total			Visitors			Returning Residents		
	Total	Male	Female	Total	Male	Female	Total	Male	Female
0-4	185	105	80	135	81	54	50	24	26
5-9	152	86	66	117	66	51	35	20	15
10-14	244	129	115	179	82	97	65	47	18
15-19	280	184	96	170	94	76	110	90	20
20-24	400	228	172	243	134	109	157	94	63
25-29	559	291	268	372	165	207	187	126	61
30-34	598	337	261	397	205	192	201	132	69
35-39	536	306	230	354	186	168	182	120	62
40-44	594	326	268	425	223	202	169	103	66
45-49	576	319	257	429	229	200	147	90	57
50-54	516	285	231	415	221	194	101	64	37
55-59	399	201	198	299	158	141	100	43	57
60-64	307	174	133	239	138	101	68	36	32
65-69	218	126	92	144	88	56	74	38	36
70-74	120	69	51	86	54	32	34	15	19
75+	95	49	46	64	34	30	31	15	16
Total	5,779	3,215	2,564	4,068	2,158	1,910	1,711	1,057	654
% Distribution	100.0	55.6	44.4	70.4	37.3	33.1	29.6	18.3	11.3

Table 3. Total Visitors by Usual Residence and Purpose of Visit September, 2013

Country of Usual Residence	Purpose of Visit						
	Total	% Distribution	Holiday/Vacation	Business/Conference	Visiting Relative/Friends	Other Reasons	Not Stated
Australia	991	24.4	584	78	228	70	31
New Zealand	1,927	47.4	914	202	658	80	73
Fiji	150	3.7	35	69	25	9	12
American Samoa	-	-	-	-	-	-	-
Western Samoa	14	0.3	1	11	2	-	-
Other Pacific Islands	54	1.3	12	33	5	3	1
Japan	66	1.6	43	13	8	1	1
China	45	1.1	16	15	5	6	3
India	4	0.1	-	1	3	-	-
Korea	3	0.1	2	-	1	-	-
Other Asian Countries	38	0.9	27	6	1	3	1
UK	117	2.9	79	6	4	5	23
Germany	83	2.0	70	4	3	-	6
France	16	0.4	5	9	1	-	1
Italy	8	0.2	8	-	-	-	-
Other European Countries	106	2.6	101	3	-	1	1
All African Countries	2	0.0	1	-	-	1	-
United States of America	410	10.1	150	48	141	24	47
Canada	21	0.5	14	3	2	-	2
Other American Countries	13	0.3	8	1	1	-	3
Total	4,068	100.0	2,070	502	1,088	203	205
% Distribution	100.0		50.9	12.3	26.7	5.0	5.0

Table 4: AIR DEPARTURES by Age Group, Passanger's Type for September, 2013

<i>Age Group</i>	<i>Departing Residents</i>	<i>Percentage Distribution</i>	<i>Visitors</i>	<i>Percentage Distribution</i>	<i>Total</i>	<i>Percentage Distribution</i>
0 - 4	70	4.2	168	4.3	238	4.3
5 - 9	38	2.3	112	2.9	150	2.7
10 - 14	54	3.2	94	2.4	148	2.7
15 - 19	89	5.3	113	2.9	202	3.6
20 - 24	156	9.3	280	7.2	436	7.8
25 - 29	167	10.0	385	9.9	552	9.9
30 - 34	154	9.2	371	9.5	525	9.4
35 - 39	158	9.4	345	8.8	503	9.0
40 - 44	159	9.5	352	9.0	511	9.2
45 - 49	169	10.1	396	10.1	565	10.1
50 - 54	131	7.8	377	9.7	508	9.1
55 - 59	117	7.0	308	7.9	425	7.6
60 - 64	81	4.8	252	6.5	333	6.0
65 - 69	68	4.1	191	4.9	259	4.6
70 - 74	30	1.8	86	2.2	116	2.1
75+	33	2.0	75	1.9	108	1.9
All Ages	1,674	100.0	3,905	100.0	5,579	100.0
YACHT	-	-	291	0	291	0
CRUISE SHIP	-	-	1,950	0	1950	0
Total	1,674	100.0	6,146	100.0	7,820	100.0

Table 5. Total Departures by Country of Residence and Gender September, 2013

<i>Country of Usual Residence</i>	<i>Male</i>	<i>Percent</i>	<i>Female</i>	<i>Percent</i>	<i>Total</i>	<i>Percent</i>
	<i>No.</i>	<i>Distribution</i>	<i>No.</i>	<i>Distribution</i>	<i>No.</i>	<i>Distribution</i>
Australia	415	14.2	501	18.9	916	16.4
New Zealand	937	32.0	917	34.6	1,854	33.2
Fiji	94	3.2	60	2.3	154	2.8
American Samoa	8	0.3	4	0.2	12	0.2
Western Samoa	15	0.5	4	0.2	19	0.3
Tonga	921	31.5	753	28.4	1,674	30.0
Other Pacific Islands	34	1.2	17	0.6	51	0.9
Japan	37	1.3	36	1.4	73	1.3
China	24	0.8	15	0.6	39	0.7
India	1	0.0	1	0.0	2	0.0
Korea	5	0.2	-	-	5	0.1
Other Asian Countries	16	0.5	13	0.5	29	0.5
UK	53	1.8	45	1.7	98	1.8
Germany	40	1.4	38	1.4	78	1.4
France	43	1.5	9	0.3	52	0.9
Italy	4	0.1	6	0.2	10	0.2
Other European Countries	56	1.9	35	1.3	91	1.6
All African Countries	6	0.2	3	0.1	9	0.2
United States of America	200	6.8	177	6.7	377	6.8
Canada	11	0.4	11	0.4	22	0.4
Other American Countries	8	0.3	6	0.2	14	0.3
Total	2,928	100.0	2,651	100.0	5,579	100.0