



Government of Tonga

INTERNATIONAL ARRIVALS AND DEPARTURES November 2012

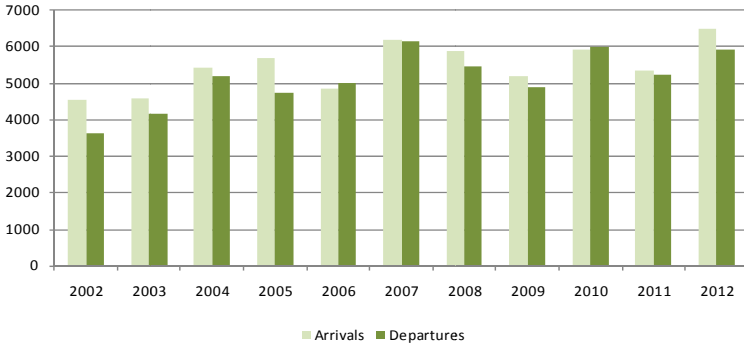
SD38M-06

Statistical Bulletin

Month of November 2012	Number	Change from previous month	Change from previous year
All Arrivals	7,215	-7.1	32.9
Air Visitors	4,052	3.7	35.2
Air Returning Residents	2,459	42.6	4.5
Cruise Ships	618	-66.0	0.0
Yachts	86	-72.7	11.7
All Departures	6,725	-22.8	25.8

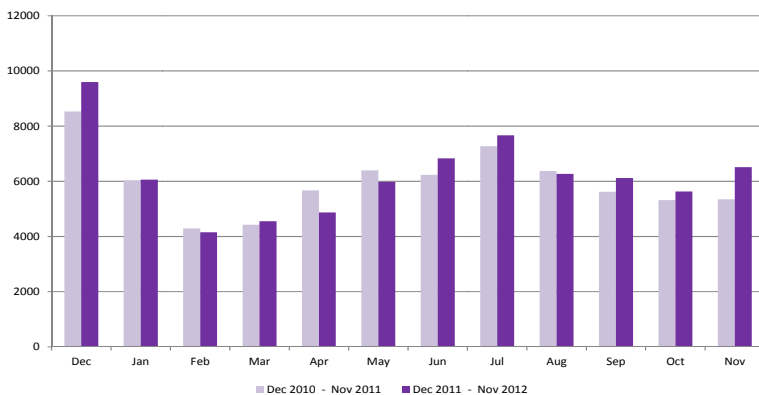
- A decline of 7.1% of all arrivals (7,215) compared to the previous month of October 2012 (7,766)
- An increase of 3.7% of all air visitors (4,052) compared to October 2012 (3,909)
- Again an increase of 42.6% (2,459) of returning residents compared to previous month (1,725)
- 618 arrived by cruise ship a decline of 66.0% compared to October 2012
- A decline of 72.7% of yacht arrivals compared to the previous month
- A decline of 22.8% of all departures from October 2012

Fig. 1: November Air Arrivals and Departures 2002 - 2012



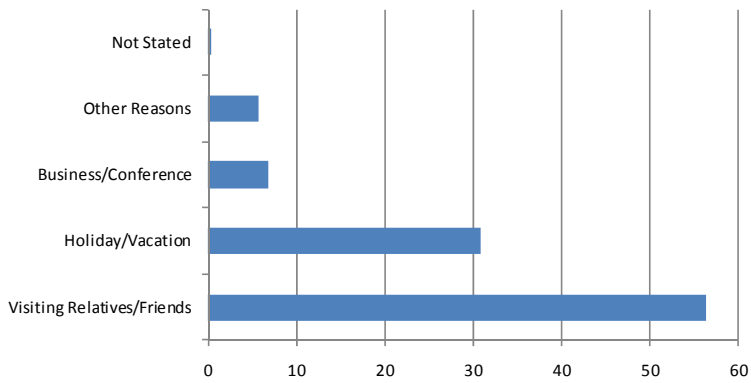
- Total arrivals in November 2012 were 7,215 an increase of 32.9% compared to November 2011(5,462).
- Total departures of 6,725 in November 2012, an increase of 25.8% compared to November 2011 (5,387)

Fig. 2: Monthly Air Arrivals vs the corresponding month of the previous year



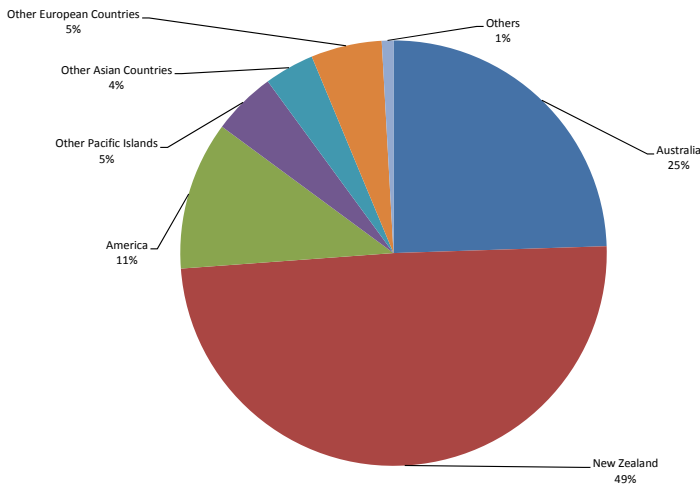
- Total air visitor arrivals in November 2012 were 4,052 an increase of 35.2% compared to November 2011 (2,996)

Fig. 3: Air Visitors by Purpose of Visit November, 2012



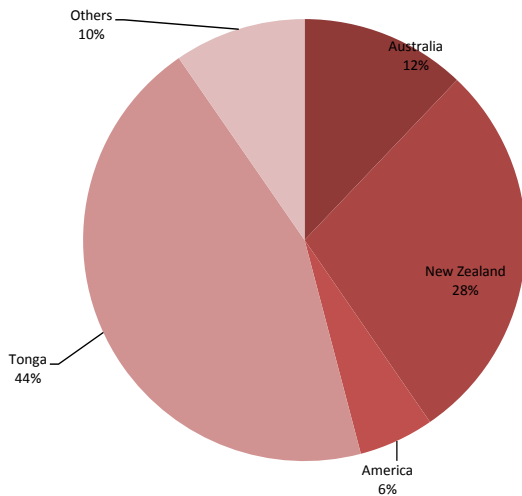
- Visiting Relatives/Friends made up 56.3% (2,282) of all air visitors to the Kingdom in the month of November.
- 30.8% (1,249) of the total visitors were here on Holiday/Vacation.
- Visitors who were here on Business or Conference made up 6.8% (275) and those with other reasons were 5.8% (234)

Fig. 4: Air Visitors by Country of Usual Residence November, 2012



- New Zealand remains as the leading country in visitors arrivals by country of usual residence, accounting for 49.4% (2,000) of total air visitors
- This was followed by Australia with 24.5 % (991), and USA 11.3% (458)

Fig. 5: Air Departures by Country of Usual Residence November, 2012



- Most of the persons departing in the month of November were persons residing in the Kingdom of Tonga (2630) followed by New Zealand (1,674) and Australia (717)

Background Information

Data is extracted from the arrival and departure cards of the Immigration Department, Ministry of Foreign Affairs, and Customs vessel & yacht log book. The Statistics Department reconciles the figures from the Air Terminal Services Manifest and Ports Authority Manifest to produce final published data.

Statistics on Overseas Arrivals and Departures related to the number of movements of travelers rather than the number of travelers (i.e. the multiple movements of individual persons during a given reference period are all counted).

Definitions

- ▶ **A Visitor** is a person other than a Tongan citizen, permit holder and exempted person, who usually stay at least 24 hours in the Kingdom, or who stays overnight in accommodation within Tonga. This refers to passengers arriving by air and yacht only.
- ▶ **Cruise Ship Passengers** are defined as those who arrive and depart in the same vessel which is on a cruise trip, and use that vessel's accommodation during their stay in Tonga. They are also known as "Excursionist"
- ▶ **A Returning resident** is a person who has the Kingdom of Tonga as their permanent address for more than six months of the year and returns to Tonga after a trip overseas. Tongan residence is self-defined as reported by travelers when completing the Passenger Arrival Card.
- ▶ **Mode of Transport** Only air, yacht and cruise ships passengers are included. Passenger/crew on cargo, navy or special vessels are excluded.

The Statistics Department wishes to acknowledge the cooperation of the Immigration Department of the Ministry of Foreign Affairs and Trade and the Custom Department of the Ministry of Revenue Services, Air Terminal Services, Ports Authority making it possible to publish these important statistics.

Table 1. Monthly Arrival and Departure by Mode of Travel and Net Migration, 2010 - 2012

Period	Visitors Arrivals				Returning Residents				Total Arrivals				Total Departures				Net Migration
	Air	Ship	Yacht	Total	Air	Ship	Yacht	Total	Air	Ship	Yacht	Total	Air	Ship	Yacht	Total	
2005	42,437	11,840	943	55,220	21,066			21,066	63,503	11,840	943	76,286	60,276	11,871	1,393	73,540	2,746
2006	46,268	10,809	868	57,945	20,707			20,707	66,975	10,809	868	78,652	68,637	13,049	582	82,268	(3,616)
2007	43,344	8,790	1,140	53,274	22,313			22,313	65,657	8,790	1,140	75,587	71,325	10,461	1,630	83,416	(7,829)
2008	50,462	14,599	1,828	66,889	24,239			24,239	74,701	14,599	1,828	91,128	76,704	14,602	1,584	92,890	(1,762)
2009	45,711	27,641	1,317	74,669	25,134			25,134	70,845	27,641	1,317	99,803	70,949	27,150	1,261	99,360	443
2010	47,081	16,265	1,659	65,005	24,501			24,501	71,582	16,265	1,659	89,506	72,533	16,244	1,830	90,607	(1,101)
2011	46,005	20,519	989	67,513	26,587			26,587	72,592	20,519	989	94,100	67,976	22,939	1,259	92,174	1,926
2010																	
January	3,158	646	4	3,808	3,019			3,019	6,177	646	4	6,827	7,822	642	-	8,464	(1,637)
February	2,379	-	5	2,384	2,083			2,083	4,462	-	5	4,467	5,096	-	1	5,097	(630)
March	3,134	853	5	3,992	1,730			1,730	4,864	853	5	5,722	4,993	850	7	5,850	(128)
April	2,818	2,802	30	5,650	1,906			1,906	4,724	2,802	30	7,556	5,101	2,806	34	7,941	(385)
May	3,670	5,303	177	9,150	2,230			2,230	5,900	5,303	177	11,380	4,929	5,302	107	10,338	1,042
June	4,701	-	275	4,976	1,888			1,888	6,589	-	275	6,864	5,173	-	344	5,517	1,347
July	4,900	-	238	5,138	1,814			1,814	6,714	-	238	6,952	7,428	-	386	7,814	(862)
August	4,216	-	246	4,462	1,848			1,848	6,064	-	246	6,310	6,342	-	231	6,573	(263)
September	4,576	5,275	188	10,039	1,756			1,756	6,332	5,275	188	11,795	6,379	5,253	165	11,797	(2)
October	3,467	-	352	3,819	1,809			1,809	5,276	-	352	5,628	6,107	-	403	6,510	(882)
November	3,569	1,386	126	5,081	2,378			2,378	5,947	1,386	126	7,459	5,990	1,391	130	7,511	(52)
December	6,493	-	13	6,506	2,040			2,040	8,533	-	13	8,546	7,173	-	22	7,195	1,351
2011																	
January	2,844		2	2,846	3,185			3,185	6,029	-	2	6,031	7,755	-	-	7,755	(1,724)
February	2,302	6,847	5	9,154	1,985			1,985	4,287	6,847	5	11,139	6,031	7,489	4	13,524	(2,385)
March	2,477	1,407	18	3,902	1,947			1,947	4,424	1,407	18	5,849	4,526	1,411	16	5,953	(104)
April	3,520	3,038	20	6,578	2,152			2,152	5,672	3,038	20	8,730	5,367	3,045	11	8,423	307
May	3,812	-	140	3,952	2,588			2,588	6,400	-	140	6,540	5,565	-	45	5,610	930
June	4,323	-	143	4,466	1,913			1,913	6,236	-	143	6,379	2,684	-	176	2,860	3,519
July	5,280	2,376	162	7,818	1,998			1,998	7,278	2,376	162	9,816	7,415	2,378	213	10,006	(190)
August	4,486	-	244	4,730	1,889			1,889	6,375	-	244	6,619	7,266	-	182	7,448	(829)
September	3,561	-	223	3,784	2,063			2,063	5,624	-	223	5,847	3,258	4,391	268	7,917	(2,070)
October	3,155	4,387	155	7,697	2,164			2,164	5,319	4,387	155	9,861	5,927	-	236	6,163	3,698
November	2,996	-	77	3,073	2,354			2,354	5,350	-	77	5,427	5,252	-	94	5,346	81
December	7,249	2,464	8	9,721	2,349			2,349	9,598	2,464	8	12,070	6,930	4,225	14	11,169	901
2012																	
January	3,043	-	-	3,043	3,018			3,018	6,061	-	-	6,061	8,296	-	-	8,296	(2,235)
February	2,241	1,220	4	3,465	1,913			1,913	4,154	1,220	4	5,378	5,637	1,365	3	7,005	(1,627)
March	2,629	865	15	3,509	1,927			1,927	4,556	865	15	5,436	4,866	816	10	5,692	(256)
April	3,022	3,063	44	6,129	1,847			1,847	4,869	3,063	44	7,976	5,044	2,999	46	8,089	(113)
May	3,497	-	302	3,799	2,486			2,486	5,983	-	302	6,285	5,310	-	83	5,393	892
June	4,892	-	182	5,074	1,836			1,836	6,728	-	182	6,910	4,764	-	249	5,013	1,897
July	5,789	-	235	6,024	1,880			1,880	7,669	-	235	7,904	7,677	-	194	7,871	33
August	4,286	-	254	4,540	1,986			1,986	6,272	-	254	6,526	6,966	-	269	7,235	(709)
September	4,156	-	351	4,507	1,966			1,966	6,122	-	351	6,473	5,939	-	313	6,252	221
October	3,909	1,817	315	6,041	1,725			1,725	5,634	1,817	315	7,766	6,566	1,815	334	8,715	(949)
November	4,052	618	86	4,756	2,459			2,459	6,511	618	86	7,215	5,914	618	193	6,725	490

Table 2. Total Arrivals by Age, Type of Passangers and Gender November, 2012

Age Group	Type of Passangers								
	Total			Visitors			Returning Residents		
	Total	Male	Female	Total	Male	Female	Total	Male	Female
0-4	405	209	196	293	150	143	112	59	53
5-9	195	100	95	146	78	68	49	22	27
10-14	173	88	85	141	67	74	32	21	11
15-19	305	130	175	211	82	129	94	48	46
20-24	595	271	324	323	123	200	272	148	124
25-29	619	314	305	309	125	184	310	189	121
30-34	503	250	253	290	136	154	213	114	99
35-39	509	259	250	305	151	154	204	108	96
40-44	635	350	285	378	196	182	257	154	103
45-49	645	348	297	400	198	202	245	150	95
50-54	540	268	272	352	169	183	188	99	89
55-59	453	227	226	289	154	135	164	73	91
60-64	370	202	168	241	122	119	129	80	49
65-69	263	136	127	181	94	87	82	42	40
70-74	152	86	66	97	54	43	55	32	23
75+	149	61	88	96	40	56	53	21	32
Total	6,511	3,299	3,212	4,052	1,939	2,113	2,459	1,360	1,099
% Distribution	100.0	50.7	49.3	62.2	29.8	32.5	37.8	20.9	16.9

Table 3. Total Visitors by Usual Residence and Purpose of Visit November, 2012

Country of Usual Residence	Purpose of Visit						
	Total	% Distribution	Holiday/Vacation	Business/Conference	Visiting Relative/Friends	Other Reasons	Not Stated
Australia	991	24.5	293	53	590	51	4
New Zealand	2,000	49.4	562	104	1,253	74	7
Fiji	144	3.6	17	34	70	23	-
American Samoa	10	0.2	1	1	7	1	-
Western Samoa	24	0.6	6	4	10	4	-
Other Pacific Islands	18	0.4	7	4	4	3	-
Japan	58	1.4	28	5	16	9	-
China	40	1.0	4	23	5	8	-
India	2	0.0	-	-	-	1	1
Korea	12	0.3	7	2	2	1	-
Other Asian Countries	41	1.0	21	5	3	12	-
UK	39	1.0	27	6	4	2	-
Germany	68	1.7	60	2	5	1	-
France	18	0.4	15	1	2	-	-
Italy	6	0.1	4	-	2	-	-
Other European Countries	87	2.1	70	4	12	1	-
All African Countries	3	0.1	1	-	1	1	-
United States of America	458	11.3	110	21	290	37	-
Canada	24	0.6	14	3	4	3	-
Other American Countries	9	0.2	2	3	2	2	-
Total	4,052	100.0	1,249	275	2,282	234	12
% Distribution	100.0		30.8	6.8	56.3	5.8	0.3

Table 4: AIR DEPARTURES by Age Group, Passanger's Type for November, 2012

<i>Age Group</i>	<i>Returning Residence</i>	<i>Percentage Distribution</i>	<i>Visitors</i>	<i>Percentage Distribution</i>	<i>Total</i>	<i>Percentage Distribution</i>
0 - 4	109	4.1	166	5.1	275	4.6
5 - 9	87	3.3	83	2.5	170	2.9
10 - 14	101	3.8	87	2.6	188	3.2
15 - 19	180	6.8	125	3.8	305	5.2
20 - 24	272	10.3	220	6.7	492	8.3
25 - 29	339	12.9	288	8.8	627	10.6
30 - 34	278	10.6	261	7.9	539	9.1
35 - 39	238	9.0	273	8.3	511	8.6
40 - 44	238	9.0	334	10.2	572	9.7
45 - 49	214	8.1	356	10.8	570	9.6
50 - 54	163	6.2	317	9.7	480	8.1
55 - 59	131	5.0	277	8.4	408	6.9
60 - 64	115	4.4	214	6.5	329	5.6
65 - 69	59	2.2	145	4.4	204	3.4
70 - 74	52	2.0	81	2.5	133	2.2
75+	54	2.1	57	1.7	111	1.9
All Ages	2,630	100.0	3,284	100.0	5,914	100.0

Table 5. Total Departures by Country of Residence and Gender November, 2012

<i>Country of Usual Residence</i>	<i>Male</i>	<i>Percent</i>	<i>Female</i>	<i>Percent</i>	<i>Total</i>	<i>Percent</i>
	<i>No.</i>	<i>Distribution</i>	<i>No.</i>	<i>Distribution</i>		<i>No.</i>
Australia	315	10.1	402	14.4	717	12.1
New Zealand	794	25.4	880	31.5	1,674	28.3
Fiji	62	2.0	42	1.5	104	1.8
American Samoa	2	0.1	1	0.0	3	0.1
Western Samoa	14	0.4	11	0.4	25	0.4
Tonga	1,537	49.2	1,093	39.1	2,630	44.5
Other Pacific Islands	15	0.5	6	0.2	21	0.4
Japan	32	1.0	22	0.8	54	0.9
China	29	0.9	19	0.7	48	0.8
India	3	0.1	-	-	3	0.1
Korea	6	0.2	1	0.0	7	0.1
Other Asian Countries	26	0.8	14	0.5	40	0.7
UK	20	0.6	14	0.5	34	0.6
Germany	43	1.4	30	1.1	73	1.2
France	8	0.3	14	0.5	22	0.4
Italy	8	0.3	3	0.1	11	0.2
Other European Countries	40	1.3	37	1.3	77	1.3
All African Countries	1	0.0	2	0.1	3	0.1
United States of America	147	4.7	178	6.4	325	5.5
Canada	15	0.5	13	0.5	28	0.5
Other American Countries	5	0.2	10	0.4	15	0.3
Total	3,122	100.0	2,792	100.0	5,914	100.0