



Government of Tonga

# INTERNATIONAL ARRIVALS AND DEPARTURES October 2012

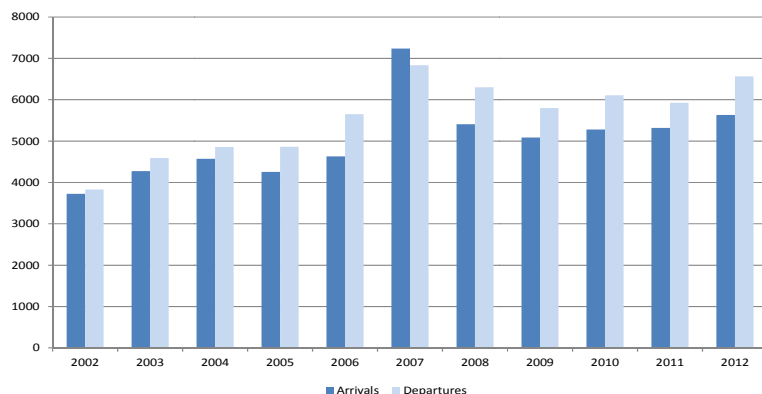
SD38M-05

## Statistical Bulletin

Month of	Number	Change from previous month	Change from previous year
October 2012			
All Arrivals	7,766	20.0	-21.2
Air Visitors	3,909	-5.9	23.9
Air Returning Residents	1,725	-12.3	-20.3
Cruise Ships	1,817	0.0	-58.6
Yachts	315	-10.3	103.2
All Departures	8,715	39.4	-17.8

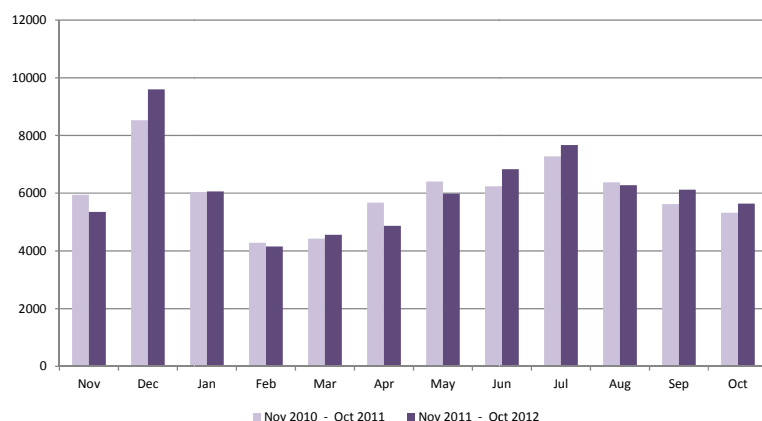
- An increase of 20% of all arrivals (7,766) compared to the previous month of September 2012 (6,473)
- A decline of 5.9% of all air visitors (3,909) compared to September 2012 (4,156)
- Again a decline of 12.3% (1,725) of returning residents compared to previous month (1,966)
- 1,817 arrived by Cruise Ship
- A decline of 10.3% of yacht arrivals compared to the previous month
- An increase of 39.4% of all departures from September 2012

Fig. 1: October Air Arrivals and Departures 2002 - 2012



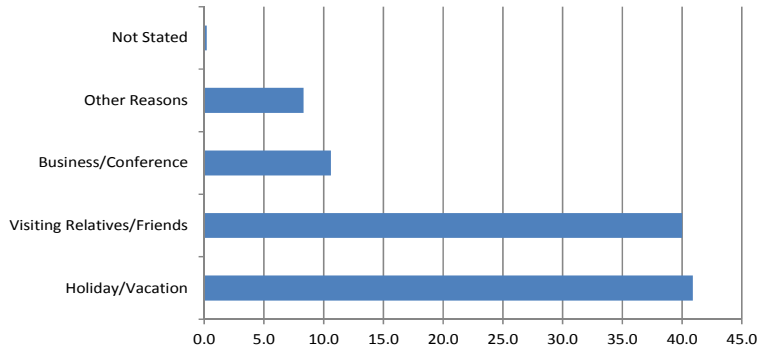
- Total arrivals in October 2012 were 7,766, a decline of 21.2% compared to October 2011 (9,861).
- Total departures of 8,715 in October 2012, a decline of 17.8% compared to October 2011 (6,163)

Fig. 2: Monthly Air Arrivals vs the corresponding month of the previous year.



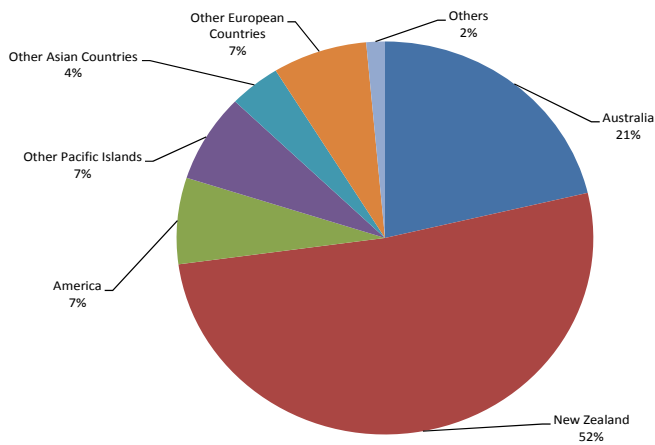
- Total air visitor arrivals in October 2012 were 3,909 an increase of 23.9% compared to October 2011 (3,155)

**Fig. 3: Air Visitors by Purpose of Visit October, 2012**



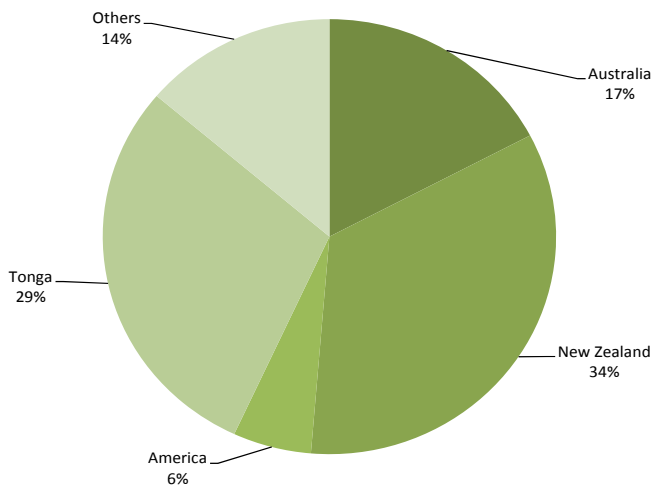
- Holiday/Vacation made up 40.9% (1,598) of all air visitors to the Kingdom in the month of October.
- 40.0% (1,564) of the total air visitors were here to Visit Relative/Friends.
- Visitors who were here on Business or Conference made up 10.6% (413) and those with other reasons were 8.3% (325)

**Fig. 4: Air Visitors by Country of Usual Residence October, 2012**



- New Zealand remains as the leading country in visitors arrivals by country of usual residence, accounting for 51.5% (2,014) of total air visitors
- This was followed by Australia with 21.3 % (814), and USA 7.1% (278)

**Fig. 5: Air Departures by Country of Usual Residence October, 2012**



- Most of the persons departing in the month of October were persons residing in the New Zealand (2233) followed by The Kingdom of Tonga (1,925) and Australia (1,136)

## Background Information

Data is extracted from the arrival and departure cards of the Immigration Department, Ministry of Foreign Affairs, and Customs vessel & yacht log book. The Statistics Department reconciles the figures from the Air Terminal Services Manifest and Ports Authority Manifest to produce final published data.

Statistics on Overseas Arrivals and Departures related to the number of movements of travelers rather than the number of travelers (i.e. the multiple movements of individual persons during a given reference period are all counted).

## Definitions

- ▶ **A Visitor** is a person other than a Tongan citizen, permit holder and exempted person, who usually stay at least 24 hours in the Kingdom, or who stays overnight in accommodation within Tonga. This refers to passengers arriving by air and yacht only.
- ▶ **Cruise Ship Passengers** are defined as those who arrive and depart in the same vessel which is on a cruise trip, and use that vessel's accommodation during their stay in Tonga. They are also known as "Excursionist"
- ▶ **A Returning resident** is a person who has the Kingdom of Tonga as their permanent address for more than six months of the year and returns to Tonga after a trip overseas. Tongan residence is self-defined as reported by travelers when completing the Passenger Arrival Card.
- ▶ **Mode of Transport** Only air, yacht and cruise ships passengers are included. Passenger/crew on cargo, navy or special vessels are excluded.

The Statistics Department wishes to acknowledge the cooperation of the Immigration Department of the Ministry of Foreign Affairs and Trade and the Custom Department of the Ministry of Revenue Services, Air Terminal Services, Ports Authority making it possible to publish these important statistics.

**Table 1. Monthly Arrival and Departure by Mode of Travel and Net Migration, 2010 - 2012**

Period	Visitors Arrivals				Returning Residents				Total Arrivals				Total Departures				Net Migration
	Air	Ship	Yacht	Total	Air	Ship	Yacht	Total	Air	Ship	Yacht	Total	Air	Ship	Yacht	Total	
2005	42,437	11,840	943	55,220	21,066			21,066	63,503	11,840	943	76,286	60,276	11,871	1,393	73,540	2,746
2006	46,268	10,809	868	57,945	20,707			20,707	66,975	10,809	868	78,652	68,637	13,049	582	82,268	(3,616)
2007	43,344	8,790	1,140	53,274	22,313			22,313	65,657	8,790	1,140	75,587	71,325	10,461	1,630	83,416	(7,829)
2008	50,462	14,599	1,828	66,889	24,239			24,239	74,701	14,599	1,828	91,128	76,704	14,602	1,584	92,890	(1,762)
2009	45,711	27,641	1,317	74,669	25,134			25,134	70,845	27,641	1,317	99,803	70,949	27,150	1,261	99,360	443
2010	47,081	16,265	1,659	65,005	24,501			24,501	71,582	16,265	1,659	89,506	72,533	16,244	1,830	90,607	(1,101)
2011	46,005	20,519	989	67,513	26,587			26,587	72,592	20,519	989	94,100	67,976	22,939	1,259	92,174	1,926
<b>2010</b>																	
January	3,158	646	4	3,808	3,019			3,019	6,177	646	4	6,827	7,822	642	-	8,464	(1,637)
February	2,379	-	5	2,384	2,083			2,083	4,462	-	5	4,467	5,096	-	1	5,097	(630)
March	3,134	853	5	3,992	1,730			1,730	4,864	853	5	5,722	4,993	850	7	5,850	(128)
April	2,818	2,802	30	5,650	1,906			1,906	4,724	2,802	30	7,556	5,101	2,806	34	7,941	(385)
May	3,670	5,303	177	9,150	2,230			2,230	5,900	5,303	177	11,380	4,929	5,302	107	10,338	1,042
June	4,701	-	275	4,976	1,888			1,888	6,589	-	275	6,864	5,173	-	344	5,517	1,347
July	4,900	-	238	5,138	1,814			1,814	6,714	-	238	6,952	7,428	-	386	7,814	(862)
August	4,216	-	246	4,462	1,848			1,848	6,064	-	246	6,310	6,342	-	231	6,573	(263)
September	4,576	5,275	188	10,039	1,756			1,756	6,332	5,275	188	11,795	6,379	5,253	165	11,797	(2)
October	3,467	-	352	3,819	1,809			1,809	5,276	-	352	5,628	6,107	-	403	6,510	(882)
November	3,569	1,386	126	5,081	2,378			2,378	5,947	1,386	126	7,459	5,990	1,391	130	7,511	(52)
December	6,493	-	13	6,506	2,040			2,040	8,533	-	13	8,546	7,173	-	22	7,195	1,351
<b>2011</b>																	
January	2,844	-	2	2,846	3,185			3,185	6,029	-	2	6,031	7,755	-	-	7,755	(1,724)
February	2,302	6,847	5	9,154	1,985			1,985	4,287	6,847	5	11,139	6,031	7,489	4	13,524	(2,385)
March	2,477	1,407	18	3,902	1,947			1,947	4,424	1,407	18	5,849	4,526	1,411	16	5,953	(104)
April	3,520	3,038	20	6,578	2,152			2,152	5,672	3,038	20	8,730	5,367	3,045	11	8,423	307
May	3,812	-	140	3,952	2,588			2,588	6,400	-	140	6,540	5,565	-	45	5,610	930
June	4,323	-	143	4,466	1,913			1,913	6,236	-	143	6,379	2,684	-	176	2,860	3,519
July	5,280	2,376	162	7,818	1,998			1,998	7,278	2,376	162	9,816	7,415	2,378	213	10,006	(190)
August	4,486	-	244	4,730	1,889			1,889	6,375	-	244	6,619	7,266	-	182	7,448	(829)
September	3,561	-	223	3,784	2,063			2,063	5,624	-	223	5,847	3,258	4,391	268	7,917	(2,070)
October	3,155	4,387	155	7,697	2,164			2,164	5,319	4,387	155	9,861	5,927	-	236	6,163	3,698
November	2,996	-	77	3,073	2,354			2,354	5,350	-	77	5,427	5,252	-	94	5,346	81
December	7,249	2,464	8	9,721	2,349			2,349	9,598	2,464	8	12,070	6,930	4,225	14	11,169	901
<b>2012</b>																	
January	3,043	-	-	3,043	3,018			3,018	6,061	-	-	6,061	8,296	-	-	8,296	(2,235)
February	2,241	1,220	4	3,465	1,913			1,913	4,154	1,220	4	5,378	5,637	1,365	3	7,005	(1,627)
March	2,629	865	15	3,509	1,927			1,927	4,556	865	15	5,436	4,866	816	10	5,692	(256)
April	3,022	3,063	44	6,129	1,847			1,847	4,869	3,063	44	7,976	5,044	2,999	46	8,089	(113)
May	3,497	-	302	3,799	2,486			2,486	5,983	-	302	6,285	5,310	-	83	5,393	892
June	4,973	-	182	5,155	1,861			1,861	6,834	-	182	7,016	4,960	-	249	5,209	1,807
July	5,789	-	235	6,024	1,880			1,880	7,669	-	235	7,904	7,677	-	194	7,871	33
August	4,286	-	254	4,540	1,986			1,986	6,272	-	254	6,526	6,966	-	269	7,235	(709)
September	4,156	-	351	4,507	1,966			1,966	6,122	-	351	6,473	5,939	-	313	6,252	221
October	3,909	1,817	315	6,041	1,725			1,725	5,634	1,817	315	7,766	6,566	1,815	334	8,715	(949)

Table 2. Total Arrivals by Age, Type of Passangers and Gender October, 2012

Age Group	Type of Passangers								
	Total			Visitors			Returning Residents		
	Total	Male	Female	Total	Male	Female	Total	Male	Female
0-4	222	113	109	160	88	72	62	25	37
5-9	155	68	87	100	41	59	55	27	28
10-14	182	87	95	139	64	75	43	23	20
15-19	209	116	93	162	77	85	47	39	8
20-24	379	186	193	239	109	130	140	77	63
25-29	491	238	253	328	149	179	163	89	74
30-34	497	256	241	337	164	173	160	92	68
35-39	492	263	229	321	177	144	171	86	85
40-44	557	314	243	366	209	157	191	105	86
45-49	619	348	271	440	238	202	179	110	69
50-54	564	282	282	408	204	204	156	78	78
55-59	449	247	202	342	188	154	107	59	48
60-64	340	183	157	238	134	104	102	49	53
65-69	242	146	96	183	116	67	59	30	29
70-74	140	77	63	86	48	38	54	29	25
75+	96	54	42	60	33	27	36	21	15
<b>Total</b>	<b>5,634</b>	<b>2,978</b>	<b>2,656</b>	<b>3,909</b>	<b>2,039</b>	<b>1,870</b>	<b>1,725</b>	<b>939</b>	<b>786</b>
<b>% Distribution</b>	<b>100.0</b>	<b>52.9</b>	<b>47.1</b>	<b>69.4</b>	<b>36.2</b>	<b>33.2</b>	<b>30.6</b>	<b>16.7</b>	<b>14.0</b>

Table 3. Total Visitors by Usual Residence and Purpose of Visit October, 2012

Country of Usual Residence	Purpose of Visit						
	Total	% Distribution	Holiday/Vacation	Business/Conference	Visiting Relative/Friends	Other Reasons	Not Stated
Australia	834	21.3	296	99	367	70	2
New Zealand	2014	51.5	837	110	960	102	5
Fiji	176	4.5	10	61	41	63	1
American Samoa	6	0.2		1	5	0	0
Western Samoa	55	1.4	3	29	7	16	0
Other Pacific Islands	47	1.2	6	30	7	4	0
Japan	51	1.3	21	15	5	10	0
China	58	1.5	6	19	11	22	0
India	0	0.0	0	0	0	0	0
Korea	9	0.2	7	0	2	0	0
Other Asian Countries	38	1.0	20	13	2	3	0
UK	52	1.3	44	2	3	2	1
Germany	64	1.6	60	2	1	1	0
France	31	0.8	23	4	0	4	0
Italy	7	0.2	5	2	0	0	0
Other European Countries	133	3.4	128	1	2	2	0
All African Countries	2	0.1	2	0	0	0	0
United States of America	278	7.1	96	19	143	20	0
Canada	26	0.7	18	2	5	1	0
Other American Countries	28	0.7	16	4	3	5	0
<b>Total</b>	<b>3909</b>	<b>100.0</b>	<b>1598</b>	<b>413</b>	<b>1564</b>	<b>325</b>	<b>9</b>
<b>% Distribution</b>	<b>100.0</b>		<b>40.9</b>	<b>10.6</b>	<b>40.0</b>	<b>8.3</b>	<b>0.2</b>

Table 4: AIR DEPARTURES by Age Group, Passanger's Type for October, 2012

	Returning <i>Residence</i>	Percentage <i>Distribution</i>	<i>Visitors</i>	Percentage <i>Distribution</i>	<i>Total</i>	Percentage <i>Distribution</i>
<b>Age Group</b>						
0 - 4	79	4.1	173	3.7	252	3.8
5 - 9	37	1.9	165	3.6	202	3.1
10 - 14	47	2.4	223	4.8	270	4.1
15 - 19	76	3.9	194	4.2	270	4.1
20 - 24	173	9.0	257	5.5	430	6.5
25 - 29	194	10.1	379	8.2	573	8.7
30 - 34	180	9.4	424	9.1	604	9.2
35 - 39	187	9.7	355	7.6	542	8.3
40 - 44	210	10.9	453	9.8	663	10.1
45 - 49	203	10.5	481	10.4	684	10.4
50 - 54	157	8.2	504	10.9	661	10.1
55 - 59	121	6.3	384	8.3	505	7.7
60 - 64	98	5.1	269	5.8	367	5.6
65 - 69	67	3.5	204	4.4	271	4.1
70 - 74	67	3.5	100	2.2	167	2.5
75+	29	1.5	76	1.6	105	1.6
<b>All Ages</b>	<b>1,925</b>	<b>100.0</b>	<b>4,641</b>	<b>100.0</b>	<b>6,566</b>	<b>100.0</b>

Table 5. Total Departures by Country of Residence and Gender October, 2012

Country of Usual Residence	Male		Female		Total	
	No.	%	No.	%	No.	%
Australia	526	15.0	610	19.9	1,136	17.3
New Zealand	1,075	30.7	1,158	37.9	2,233	34.0
Fiji	148	4.2	54	1.8	202	3.1
American Samoa	6	0.2	6	0.2	12	0.2
Western Samoa	46	1.3	9	0.3	55	0.8
Tonga	1,138	32.4	787	25.7	1,925	29.3
Other Pacific Islands	44	1.3	19	0.6	63	1.0
Japan	25	0.7	16	0.5	41	0.6
China	66	1.9	22	0.7	88	1.3
India	1	0.0	-	-	1	0.0
Korea	4	0.1	2	0.1	6	0.1
Other Asian Countries	42	1.2	16	0.5	58	0.9
UK	33	0.9	29	0.9	62	0.9
Germany	38	1.1	36	1.2	74	1.1
France	14	0.4	8	0.3	22	0.3
Italy	4	0.1	7	0.2	11	0.2
Other European Countries	91	2.6	79	2.6	170	2.6
All African Countries	1	0.0	1	0.0	2	0.0
United States of America	183	5.2	183	6.0	366	5.6
Canada	15	0.4	9	0.3	24	0.4
Other American Countries	7	0.2	8	0.3	15	0.2
<b>Total</b>	<b>3,507</b>	<b>100.0</b>	<b>3,059</b>	<b>100.0</b>	<b>6,566</b>	<b>100.0</b>