



SERIES NO.
SDT: 38-13

Government of Tonga

STATISTICAL BULLETIN

ON

MONTHLY

MIGRATION STATISTICS

JUNE 2012

Statistics Department
P.O. Box 149,
Nuku'alofa,
Kingdom of Tonga
Website: www.spc.int/prism/tonga/
E-mail: dept@stats.gov.to

July 2012
Price:

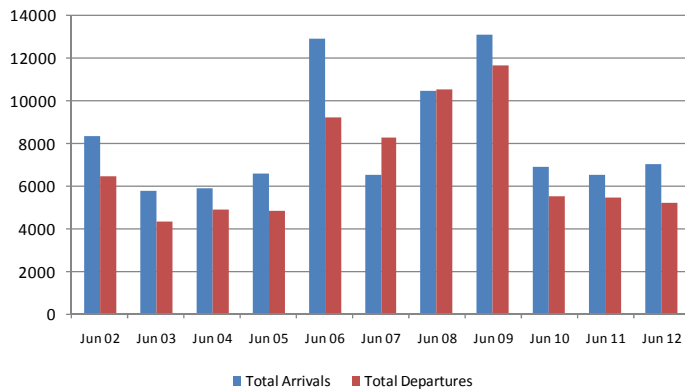
INTERNATIONAL ARRIVALS AND DEPARTURES JUNE 2012

Government of Tonga

SD38B-1

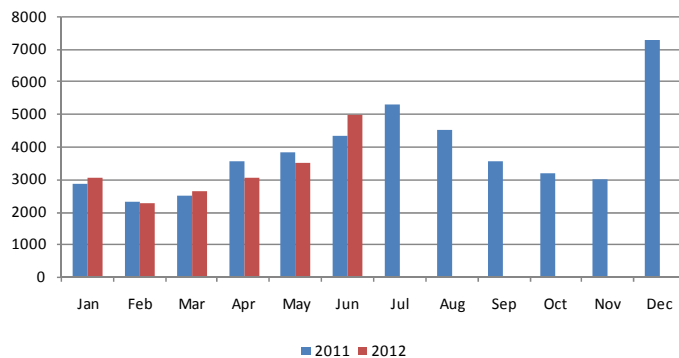
Statistical Bulletin

Fig 1: June Total Arrivals & Departures 2002 - 2012



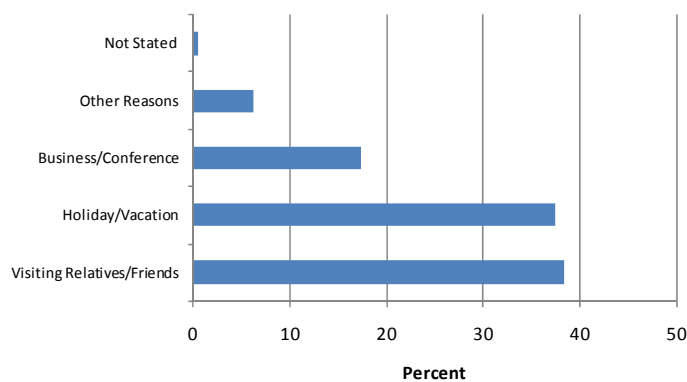
- Total arrivals in June 2012 were 7,016, an increase of 8% compared to June 2011(6,478), and an increase of 12% compared to May 2012 (6,285)
- Total departures in June 2012 were 5,209, a decline of 4% compared to June 2011(5,434) and a decrease of 3% compared to May 2012 (5,393)
- The fluctuations were mainly due to cruise ship movement.

Fig 2: Air Visitors Arrivals by month Year 2011 - 2012



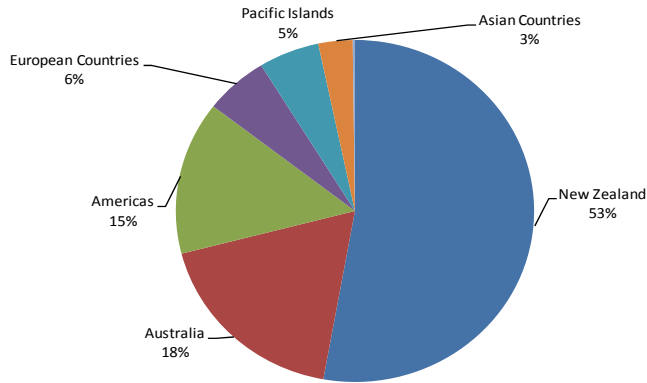
- Total air visitor arrivals in June 2012 were 4,973 an increase of 15% compared to June 2011(4,323) and an increase of 40% compared to May 2012 (3,497)
- Both April(3,022) and May(3,497) in 2012 were lower than previous years, April 2011(3,520) and May 2011(3,812)
- Events in Tonga in June 2012:
 - Lead up to the Royal Wedding
 - Liahona High School ex-students reunion

Fig 3: Air Visitors by Purpose of Visit, June 2012



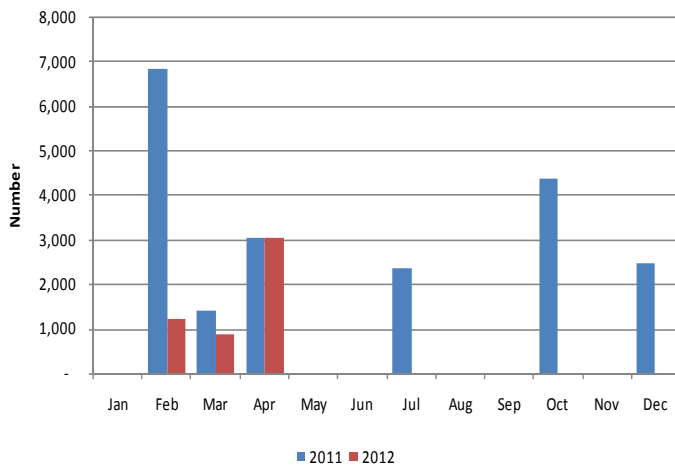
- Visiting relative and friends made up 38% (1,912) of all visitors to the Kingdom
- Similarly visitors for holiday/vacation made up 38% (1,863)
- Visitors are here on Business or Conference made up 17% (866)

Fig 4: Air Visitors by Country of Usual Residence, June 2012



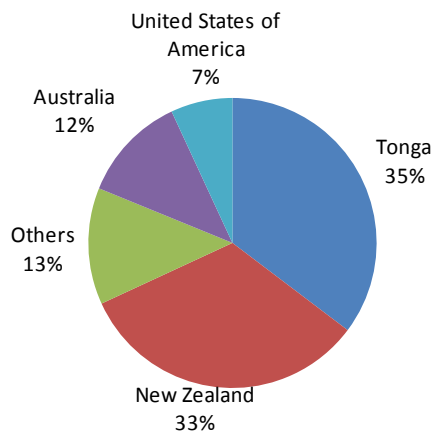
- More than half of visitors visiting the Kingdom are from New Zealand (2,627), followed by Australia (903) and Americas (721)
- More visitors came from European Countries(286), than Asian Countries (154)

Fig 5: Visitors by Cruise Ships



- There were no cruise ship visitors in June 2012 nor June 2011
- There were two cruise ships visits in February, two in March and four in April 2012
- Cruise ships have tended to visit the Kingdom in February, March, April, July, October and December in the last few years.

Fig 6: Departures by Country of Usual Residence, June 2012



- Most of the persons departing in the month of June were persons living in Tonga(1,747) followed by New Zealand (1,634)
- Residents returning to their home countries of Australia and USA were 591 and 314 respectively.

Background Information

Data is extracted from the arrival and departure cards of the Immigration Department, Ministry of Foreign Affairs, and Customs vessel & yacht log book. The Statistics Department reconciles the figures from the Air Terminal Services Manifest and Ports Authority Manifest to produce final published data.

Statistics on Overseas Arrivals and Departures related to the number of movements of travelers rather than the number of travelers (i.e. the multiple movements of individual persons during a given reference period are all counted).

Definitions

- ▶ **A Visitor** is a person other than a Tongan citizen, permit holder and exempted person, who usually stay at least 24 hours in the Kingdom, or who stays overnight in accommodation within Tonga. This refers to passengers arriving by air and yacht only.
- ▶ **Cruise Ship Passengers** are defined as those who arrive and depart in the same vessel which is on a cruise trip, and use that vessel's accommodation during their stay in Tonga. They are also known as "Excursionist"
- ▶ **A Returning resident** is a person who has the Kingdom of Tonga as their permanent address for more than six months of the year and returns to Tonga after a trip overseas. Tongan residence is self-defined as reported by travelers when completing the Passenger Arrival Card.
- ▶ **Mode of Transport** Only air, yacht and cruise ships passengers are included. Passenger/crew on cargo, navy or special vessels are excluded.

The Statistics Department wishes to acknowledge the cooperation of the Immigration Department of the Ministry of Foreign Affairs and Trade and the Custom Department of the Ministry of Revenue Services, Air Terminal Services, Ports Authority making it possible to publish these important statistics.

Table 1. Monthly Arrival and Departure by Mode of Travel and Net Migration, 2010 - 2012

Period	Visitors Arrivals				Returning Residents				Total Arrivals				Total Departures				Net Migration
	Air	Ship	Yacht	Total	Air	Ship	Yacht	Total	Air	Ship	Yacht	Total	Air	Ship	Yacht	Total	
2005	42,437	11,840	943	55,220	21,066	-	-	21,066	63,503	11,840	943	76,286	60,276	11,871	1,393	73,540	2,746
2006	46,268	10,809	868	57,945	20,707	-	-	20,707	66,975	10,809	868	78,652	68,637	13,049	582	82,268	(3,616)
2007	43,344	8,790	1,140	53,274	22,313	-	-	22,313	65,657	8,790	1,140	75,587	71,325	10,461	1,630	83,416	(7,829)
2008	50,462	14,599	1,828	66,889	24,239	-	-	24,239	74,701	14,599	1,828	91,128	76,704	14,602	1,584	92,890	(1,762)
2009	45,711	27,641	1,317	74,669	25,134	-	-	25,134	70,845	27,641	1,317	99,803	70,949	27,150	1,261	99,360	443
2010	47,081	16,265	1,659	65,005	24,501	-	-	24,501	71,582	16,265	1,659	89,506	72,533	16,244	1,830	90,607	(1,101)
2011	46,005	20,519	1,849	68,373	26,587	-	-	26,587	72,592	20,519	1,849	94,960	73,589	20,550	1,468	95,607	(647)
2010																	
January	3,158	646	4	3,808	3,019	-	-	3,019	6,177	646	4	6,827	7,822	642	-	8,464	(1,637)
February	2,379	-	5	2,384	2,083	-	-	2,083	4,462	-	5	4,467	5,096	-	1	5,097	(630)
March	3,134	853	5	3,992	1,730	-	-	1,730	4,864	853	5	5,722	4,993	850	7	5,850	(128)
April	2,818	2,802	30	5,650	1,906	-	-	1,906	4,724	2,802	30	7,556	5,101	2,806	34	7,941	(385)
May	3,670	5,303	177	9,150	2,230	-	-	2,230	5,900	5,303	177	11,380	4,929	5,302	107	10,338	1,042
June	4,701	-	275	4,976	1,888	-	-	1,888	6,589	-	275	6,864	5,173	-	344	5,517	1,347
July	4,900	-	238	5,138	1,814	-	-	1,814	6,714	-	238	6,952	7,428	-	386	7,814	(862)
August	4,216	-	246	4,462	1,848	-	-	1,848	6,064	-	246	6,310	6,342	-	231	6,573	(263)
September	4,576	5,275	188	10,039	1,756	-	-	1,756	6,332	5,275	188	11,795	6,379	5,253	165	11,797	(2)
October	3,467	-	352	3,819	1,809	-	-	1,809	5,276	-	352	5,628	6,107	-	403	6,510	(882)
November	3,569	1,386	126	5,081	2,378	-	-	2,378	5,947	1,386	126	7,459	5,990	1,391	130	7,511	(52)
December	6,493	-	13	6,506	2,040	-	-	2,040	8,533	-	13	8,546	7,173	-	22	7,195	1,351
2011																	
January	2,844	-	2	2,846	3,185	-	-	3,185	6,029	-	2	6,031	7,755	-	-	7,755	(1,724)
February	2,302	6,847	14	9,163	1,985	-	-	1,985	4,287	6,847	14	11,148	6,031	6,859	5	12,895	(1,747)
March	2,477	1,407	16	3,900	1,947	-	-	1,947	4,424	1,407	16	5,847	4,526	1,411	18	5,955	(108)
April	3,520	3,038	37	6,595	2,152	-	-	2,152	5,672	3,038	37	8,747	5,367	3,045	15	8,427	320
May	3,812	-	246	4,058	2,588	-	-	2,588	6,400	-	246	6,646	5,565	-	89	5,654	992
June	4,323	-	242	4,565	1,913	-	-	1,913	6,236	-	242	6,478	5,240	-	194	5,434	1,044
July	5,280	2,376	243	7,899	1,998	-	-	1,998	7,278	2,376	243	9,897	7,415	2,378	232	10,025	(128)
August	4,486	-	419	4,905	1,889	-	-	1,889	6,375	-	419	6,794	7,266	-	199	7,465	(671)
September	3,561	-	242	3,803	2,063	-	-	2,063	5,624	-	242	5,866	6,315	-	281	6,596	(730)
October	3,155	4,387	257	7,799	2,164	-	-	2,164	5,319	4,387	257	9,963	5,927	4,391	280	10,598	(635)
November	2,996	-	112	3,108	2,354	-	-	2,354	5,350	-	112	5,462	5,252	-	135	5,387	75
December	7,249	2,464	19	9,732	2,349	-	-	2,349	9,598	2,464	19	12,081	6,930	2,466	20	9,416	2,665
2012																	
January	3,043	-	-	3,043	3,018	-	-	3,018	6,061	-	-	6,061	8,296	-	-	8,296	(2,235)
February	2,241	1,220	4	3,465	1,913	-	-	1,913	4,154	1,220	4	5,378	5,637	1,365	3	7,005	(1,627)
March	2,629	865	15	3,509	1,927	-	-	1,927	4,556	865	15	5,436	4,866	816	10	5,692	(256)
April	3,022	3,063	44	6,129	1,847	-	-	1,847	4,869	3,063	44	7,976	5,044	2,999	46	8,089	(113)
May	3,497	-	302	3,799	2,486	-	-	2,486	5,983	-	302	6,285	5,310	-	83	5,393	892
June	4,973	-	182	5,155	1,861	-	-	1,861	6,834	-	182	7,016	4,960	-	249	5,209	1,807

Table 2. Air Arrivals by Age, Type of Passengers and Gender, June 2012

Age Group	Type of Passangers								
	Total			Visitors			Returning Residents		
	Total	Male	Female	Total	Male	Female	Total	Male	Female
0-4	311	156	155	253	120	133	58	36	22
5-9	264	142	122	248	135	113	16	7	9
10-14	261	123	138	251	117	134	10	6	4
15-19	364	144	220	320	123	197	44	21	23
20-24	511	225	286	320	120	200	191	105	86
25-29	576	290	286	364	166	198	212	124	88
30-34	576	321	255	387	195	192	189	126	63
35-39	527	293	234	344	182	162	183	111	72
40-44	654	368	286	453	246	207	201	122	79
45-49	628	331	297	450	226	224	178	105	73
50-54	576	309	267	439	239	200	137	70	67
55-59	512	286	226	384	222	162	128	64	64
60-64	439	226	213	308	155	153	131	71	60
65-69	305	150	155	227	112	115	78	38	40
70-74	155	89	66	107	66	41	48	23	25
75+	175	84	91	118	60	58	57	24	33
Total	6,834	3,537	3,297	4,973	2,484	2,489	1,861	1,053	808
Percentage Distribution	100.0	51.8	48.2	72.8	36.3	36.4	27.2	15.4	11.8

Table 3. Air Visitors by Usual Residence and Purpose of Visit, June 2012

Country of Usual Residence	Purpose of Visit						
	Total	Percentage Distribution	Holiday/Vacation	Business/Conference	Visiting Relative/Friends	Other Reasons	Not Stated
Australia	903	18	380	108	365	49	1
New Zealand	2,627	53	985	442	1,032	166	2
Fiji	110	2	15	55	23	15	2
American Samoa	44	1	4	20	10	10	-
Western Samoa	22	0	2	16	2	2	-
Other Pacific Islands	96	2	6	66	15	9	-
Japan	40	1	12	11	12	5	-
China	78	2	8	36	4	13	17
India	3	0	-	1	-	2	-
Korea	2	0	2	-	-	-	-
Other Asian Countries	31	1	10	7	6	8	-
UK	93	2	55	13	20	4	1
Germany	63	1	60	-	-	3	-
France	32	1	17	3	11	1	-
Italy	3	0	3	-	-	-	-
Other European Countries	95	2	80	2	13	-	-
All African Countries	10	0	4	-	3	3	-
United States of America	699	14	205	82	395	15	2
Canada	10	0	6	2	1	1	-
Other American Countries	12	0	9	2	-	1	-
Total	4,973	100	1,863	866	1,912	307	25
Percentage Distribution	100.0		37.5	17.4	38.4	6.2	0.5

Table 4: Air Departures by Age Group, Passenger's Type, June 2012

Age Group	Returning <i>Residents</i>	Percentage <i>Distribution</i>	<i>Visitors</i>	Percentage <i>Distribution</i>	<i>Total</i>	Percentage <i>Distribution</i>
0 - 4	54	3.1	131	4.1	185	3.7
5 - 9	50	2.9	83	2.6	133	2.7
10 - 14	39	2.2	66	2.1	105	2.1
15 - 19	73	4.2	91	2.8	164	3.3
20 - 24	177	10.1	216	6.7	393	7.9
25 - 29	211	12.1	308	9.6	519	10.5
30 - 34	203	11.6	321	10.0	524	10.6
35 - 39	178	10.2	251	7.8	429	8.6
40 - 44	160	9.2	289	9.0	449	9.1
45 - 49	165	9.4	329	10.2	494	10.0
50 - 54	112	6.4	296	9.2	408	8.2
55 - 59	115	6.6	310	9.6	425	8.6
60 - 64	89	5.1	216	6.7	305	6.1
65 - 69	51	2.9	164	5.1	215	4.3
70 - 74	37	2.1	76	2.4	113	2.3
75+	33	1.9	66	2.1	99	2.0
All Ages	1,747	100.0	3,213	100.0	4,960	100.0

Table 5. Air Departures by Usual Residence and Gender, June 2012

Country of Usual <i>Residence</i>	Male	Percentage <i>Distribution</i>	Female	Percentage <i>Distribution</i>	<i>Total</i> Persons	Percentage <i>Distribution</i>
Australia	319	11.8	272	12.1	591	11.9
New Zealand	824	30.4	810	36.0	1,634	32.9
Fiji	62	2.3	52	2.3	114	2.3
American Samoa	5	0.2	4	0.2	9	0.2
Western Samoa	17	0.6	12	0.5	29	0.6
Tonga	999	36.8	748	33.3	1,747	35.2
Other Pacific Islands	73	2.7	24	1.1	97	2.0
Japan	22	0.8	11	0.5	33	0.7
China	51	1.9	11	0.5	62	1.3
India	1	0.0	-	-	1	0.0
Korea	2	0.1	2	0.1	4	0.1
Other Asian Countries	13	0.5	4	0.2	17	0.3
UK	44	1.6	39	1.7	83	1.7
Germany	41	1.5	37	1.6	78	1.6
France	14	0.5	14	0.6	28	0.6
Italy	3	0.1	2	0.1	5	0.1
Other European Countries	38	1.4	37	1.6	75	1.5
All African Countries	6	0.2	1	0.0	7	0.1
United States of America	166	6.1	148	6.6	314	6.3
Canada	7	0.3	14	0.6	21	0.4
Other American Countries	4	0.1	7	0.3	11	0.2
Total	2,711	100.0	2,249	100.0	4,960	100.0



Printed by STATISTICS DEPARTMENT
Nuku'alofa, TONGA—2009
